



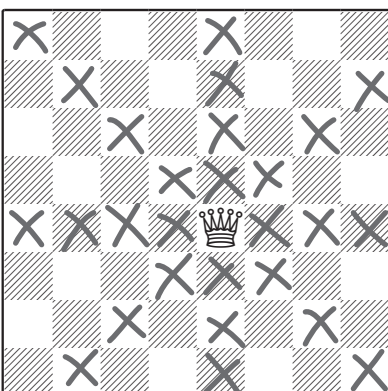
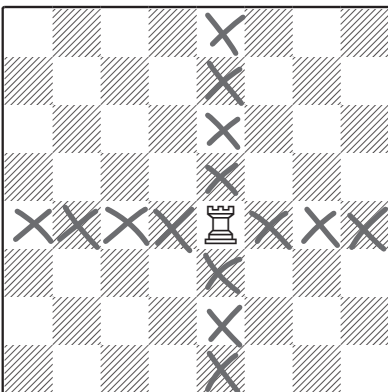
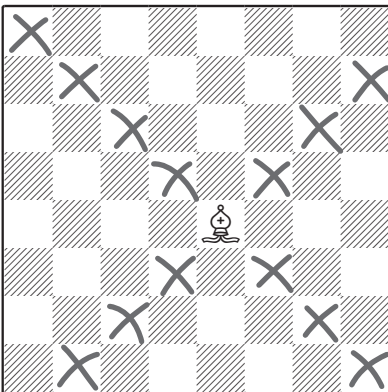
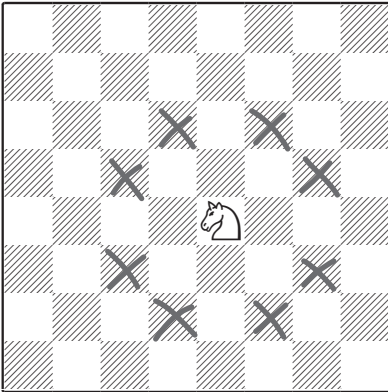
# Where do the pieces work best?

The centre of the board is important! The closer most pieces are, the stronger they are (rooks are an exception).

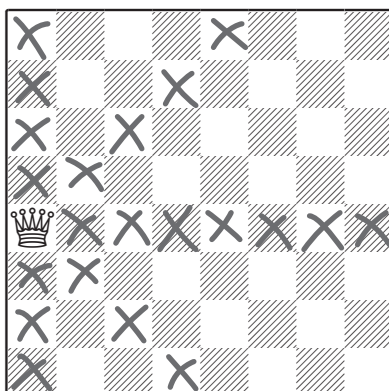
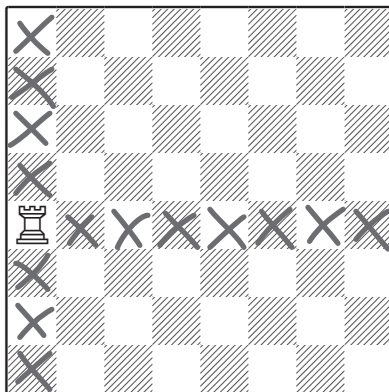
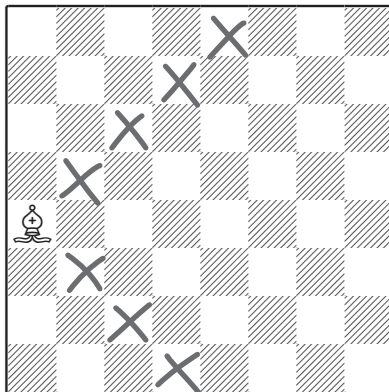
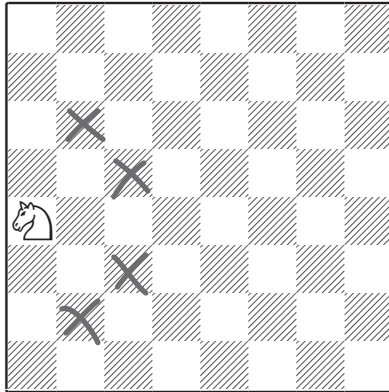
This is why it's important to fight to control or occupy the centre during the game.

Piece	In the centre	At the side	In a corner
Knight	8	4	2
Bishop	13	7	7
Rook	14	14	14
Queen	27	21	21

## In the centre



## At the side



## In a corner

