

# Where can these pieces go?

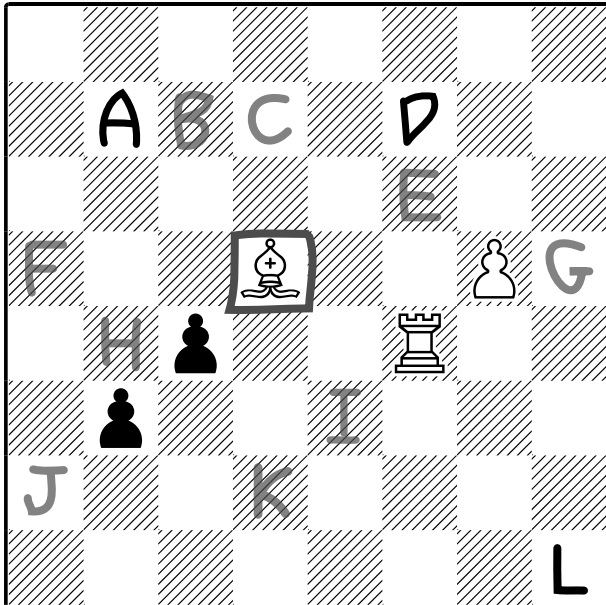


Here are the answers - how did you get on?

Remember: Rooks, bishops and queens all slide and can't jump over obstacles.

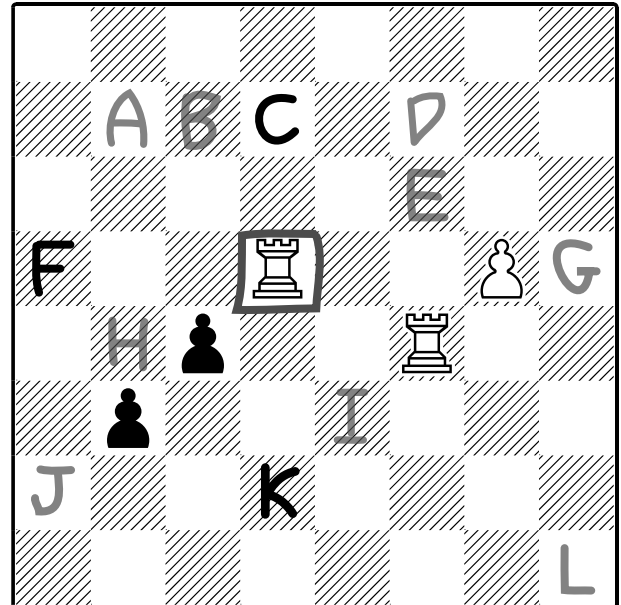
Knights can jump. If a knight is on a white square (like the one here), it can go black squares that are two spaces away. And if it's on a black square, it can go to white squares two spaces away.

## Bishop



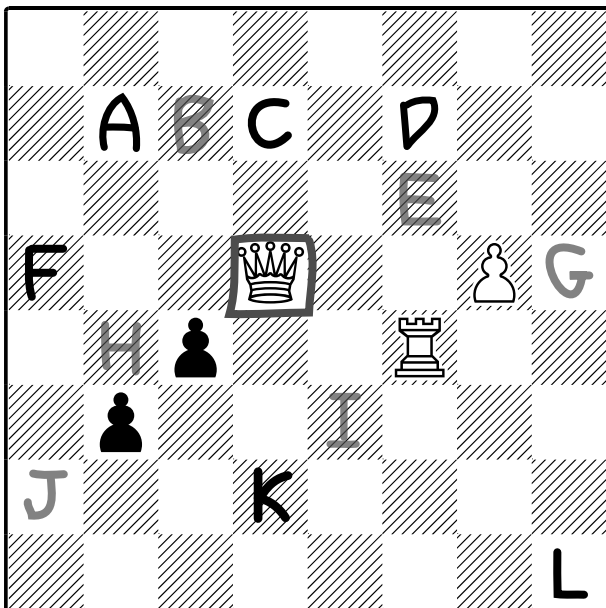
- A[] B[ ] C[ ] D[] E[ ] F[ ]  
 G[ ] H[ ] I[ ] J[ ] K[ ] L[]

## Rook



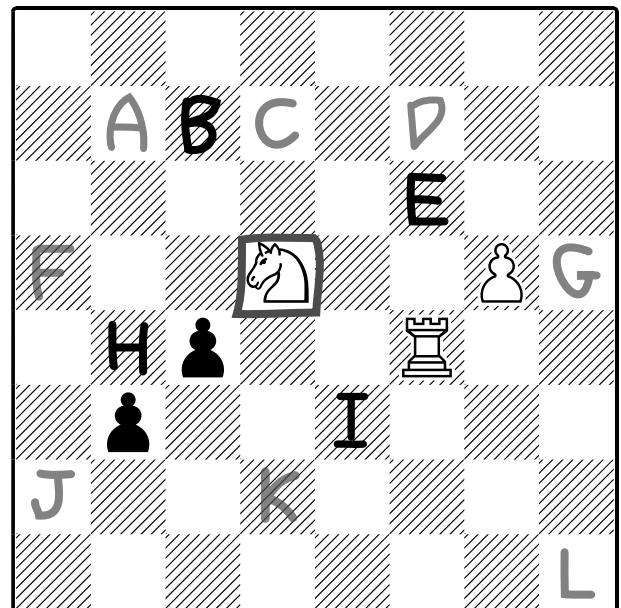
- A[ ] B[ ] C[] D[ ] E[ ] F[]  
 G[ ] H[ ] I[ ] J[ ] K[] L[ ]

## Queen



- A[] B[ ] C[] D[] E[ ] F[]  
 G[ ] H[ ] I[ ] J[ ] K[] L[]

## Knight



- A[ ] B[] C[ ] D[ ] E[] F[ ]  
 G[ ] H[] I[] J[ ] K[ ] L[ ]