

The World Youth Chess Championships 2012



The England team at the WYCC

That team in detail ...

U18 - Saravanan Sathyanandha, Astghik Stepanyan, Craig Whitfield, IM Yang-Fan Zhou

U16 - Peter Batchelor, William Foo, Oskar Hackner, Amelia Hoare, Louise Head, Roy Zhang

U14 - Daniel Abbas, Ananthanarayanan Balaji, Robert Fitzgerald, Ravi Haria, Andrew Horton, Cosima Keen, Tarun Malhotra, David Redman, Adam Taylor

U12 - Joshua Higgs, Akshaya Kalaiyalahan, Gorak Rajesh, Eva Ressel, Brian Tarhon, Matthew Wadsworth, Yang-Jian Zhou

U10 - Laura Davidson, Isabelle Gilbert, Koby Kalavannan, Anthony Zhang, Zheming Zhang

U8 - CM Joshua Altman, Leo Sanitt, Aditya Verma

Coaches - GM Nick Pert (Head Coach), WGM / IM Jovanka Houska, IM Lawrence Cooper, GM Neil McDonald, GM Mark Hebden, IM Andrew Martin, IM Andrew Greet, IM Thomas Rendle, GM Stuart Conquest

Brainwaves and bandwidth

The England Team is now underway at the 2012 World Youth Chess Championships. Everyone has achieved points, and the board orders are sorting into a top, middle and bottom. Of the 11 rounds the 1500 players from 100 countries will play here - 16,500 games in all - today's are perhaps the most rigorous test of mind, as rounds 5 and 6 are the midpoint and will be played within hours of each other, leaving little time for pause or preparation in between. A rest day will follow, then one-a-day rounds for the remaining 5 games. Along this spectrum, today is the bottleneck. Only the best minds will break through it ...



Jovanka & Amy behind the scenes in the Green Room

As the mountain looms above from our base camp in the Arena, we have been fine-tuning. The players, coaches and parents all gather in the team

CONTENTS

World Youth - FC, 2-6

ECF News - 7

CoM - 8

Results - 10

Corrections - 13

Junior - 16

ChEx Bookshelf - 17

Gift ideas - 19

Batsford Comp - 20

Book Reviews - 21

Chess Computers - 22

Images - 23

Calendar - 24

room, where there is a less temperamental internet connection and a steady din of excitement rising as the Grandmasters, youngest and oldest team players all mix easily, sharing games and tactics of opponents faced and then overcome. A group of parents have set out on their own trek, a straight-up hike to conquer the top of the slope, and an attempt to make the long journey back down has gone astray, requiring a course-correction. A daily one-way ritual has emerged now that the return by gondola has been discovered.

As we enter the playing hall, a visual wavelength of players is also assembling, across a range of colours. The bottom boards have trended a subtle citrus, the colour of the Slovenian team's hoodies, as many of the local players are less-experienced and here just to take part in the grand event. The middle hall is filled with red track suits - the bold colour of the big countries who have put forth large teams (Russia, Turkey, and USA), splattered with the white tops of Bulgaria, Mongolia and Peru and the smart, trim navy of India's fitted blazers and England's sporty polos. The top boards are a mix of players' most comfortable attire, muted hoodies and Ts from Abercrombie, Gap and Nike. Further down, the rest of the room washes in pink, as the pony-tailed girls from nearly every country seem to fancy princesses and Barbie. Hundreds of final words fill the floor simultaneously in different languages, resonating.

We feel this kinetic energy bouncing all around us against a backdrop of caffeinated drink sponsor, Shark. The players' thoughts must certainly operate at this superfrequency of an incredible human chess brain. It seems these highwired brainwaves could explode beyond the walls of the inanimate building. It is notable that Andrew Marr in "The History of the Planet" marks the moment of the Big Blue Computer defeating a human as paramount to realigning the natural order of our world. But here, in right order, all calculations are left up to the individual player - to face himself against his opponent and the unexpected moves and outcomes only the human mind can

achieve.

As the games begin, the decibels inside plummet to zero and we are relegated as observers to an endless live video loop set to mute. Only our human ability to read body language from intermittent pixels keeps the current flowing at steady speed

- Hillary Altman

Head of Delegation's midway-through-the-event update

Well, round 6 has just started and I thought it was about time to put pen to paper (or more accurately fingers to keyboard). The England team of 34 players, 9 coaches and more than 30 family members is very happily settled into the Hotel Arena. The chess is going well, with a team score after five rounds in excess of 50%, with 2 players unbeaten, with one in the top ten of his section, and with players and coaches working together in a fantastic spirit. The Slovenian organisers have done an excellent job, and in most cases are open and approachable. All of which makes being head of delegation of such a large group much easier than it might have been!



The WYCC map ...

On the hotel, we are walking distance from the playing venue; and we are by far the largest group staying in what is a relatively small and intimate hotel. (Team Scotland are also here, as is the Hong Kong team of one, and some of the Canadians). The staff are great, the beds are comfortable, and the food is both varied and plentiful. A number of the veterans of numerous previous such trips rank it amongst the top environments an England junior team has ever had; personally I can't yet claim veteran status but it's certainly the best I have experienced. About the only quibble is that the local telecoms



Joshua Altman & GM Stuart Conquest

network can't cope with the demand being put on it by hundreds of chess players in our hotel and elsewhere in the neighbourhood simultaneously all trying to access the internet to look up their opponents' games and so on. I and others have got round this by using the excellent 3G mobile coverage when necessary.

My co-correspondent Hillary Altman has eloquently described the beautiful mountain scenery hereabouts so I won't repeat that; but I will call out the amazing autumnal colours of the surrounding forests. Quite astonishing. I hope that during tomorrow's rest day I will finally be able to go explore them a little.

As far as the chess is concerned, the playing conditions are good compared to equivalent events. There was the usual rugby scrum of people trying to get into the venues at the start of round 1 but that has pretty quickly settled down. The organisers have implemented a strict policy at the main venue of only allowing players in - not even delegation heads; slightly frustrating but the players are reporting that the arbiters are controlling the games well so not the end of the world. At the smaller venue, where the U8s and the U10 girls are playing, parents are allowed in before the round starts. There are live webcams in both playing halls; and in the main hall ten live boards per section. The organisers have waived the controversial zero time default rule - instead a more sensible 30 minutes default has been applied (not that England will be testing that, since we are just a few minutes' stroll from the venue!). In relation to draw offers, normal conditions apply - no possibly confusing Sofia rules here, I am pleased to say.



Andrew & Adam, Round 11

We have all settled into a good routine (only disturbed by today's double round...), with breakfast followed by pre-game preparation followed by a stroll up (or in my case part-way up) the mountain; lunch is followed by the game for the players; after a while a couple of the fathers station themselves just outside the main playing hall to escort the children back up the hill to the Arena hotel - it is quite dark by the time the games finish, and the local roads aren't well lit. Most of the party convenes in the team room generously provided gratis by the hotel to wait for the players' return and their reviews with the coaches.

Supper is followed by a little blitz or exchange (for the players), or a beer/ glass of wine (for many of the adults). In relation to the latter, after careful research your correspondent can highly recommend a local bar called Peggy's ?

In relation to the results over the board, it was great that by the end of the 3rd round all the players had registered a score. Various team members have put in appearances on the live boards (though it's a shame that there are no live boards in the smaller playing hall, since some of our strongest contenders are in the under 8s). Regrettably we have had a couple of intra-team pairings - one in the under 8 open and one in the under 12 open. Chances are high that there will be one or two more before the end: given we have such a big delegation and since the pairing rules do not allow event organisers to take nationality into account when determining who plays whom.

We have seen some high quality games from England players - some of which have been posted onto the ECF website, with analysis and annotation from coaches Rendle and Greet.

My thanks to the players, their family members

and the coaches for their various contributions to what is so far a very successful trip. With round 6 currently in progress, we look forward to the rest of the tournament!

- Jim Wadsworth, Monday 12th November

A parent's view - WYCC article from Tim Horton



Leo Sanitt - with England flags on the balconies behind

We have now got to Day 8, and Round 8 of the World Youth Chess Championships. For those of you outside this 'bubble' that is the WYCC, you can call it Thursday 15th November! After the double-round day on Day 5, and a rest day on Day 6, we are back into the daily routine of preparing and coaching, playing and reviewing individual games. At this point we have four more rounds to play.

The double-round day (Rounds 5 and 6) on Day 5 (Monday) was a very long, hard day. There was some great chess played, but unfortunately Team England didn't always manage to collect points as a just reward for the effort put in, particularly from the second round of the day.

However, on Day 7, it was great to see that some of the young players who had just missed points on Day 5 showed great determination and skill to win and draw their games. There is considerable resilience in this squad of young players, and all are striving to perform their very best in each round.

Day 7 marked the second half of the tournament, and each player has an opportunity to re-group,



Matthew - Round 11

or kick on, after their results during the first half. The need for stamina to continue to play at these exceptionally high levels cannot be understated, and this will be an increasing challenge during the next few days. The old-timers talk candidly about the poorer quality of chess that can sometimes be played during rounds 10 and 11!

This is the first time that my son, Andy, and I have been involved in such a high-profile chess competition. In his recent post, Jim Wadsworth (our Head of Delegation) comments on some of the chess organization, in comparison to previous events. I can only agree with his comments about that, and accept that we have certainly been very fortunate to join a trip with such good facilities! An additional benefit of the trip has been the superb surroundings. Maribor is the second city in Slovenia, with a population of approximately 90,000 people. The large river Drava flows through its centre, and just on the edge of the city there is a ski-resort situated on a forest-lined mountainside. A gondola is running to make it easier to get to the mountain top (1042m high), and



Cosima, Louise, Amy & Astghik - Round 11

there is great walking to enjoy. In the hotel the final preparations are being made for this afternoon's round. Lines are being chosen to play at the chess board, and wise advice is being offered by the fantastic coaching team from their considerable experience. We are ready for round 8. Let's wish the players well!



Ananth



Yang-Jian



In the team room ...



Adam (R)

ENGLAND - results over eleven rounds

Name	Rnd 1	Rnd 2	Rnd 3	Rnd 4	Rnd 5	Rnd 6	Rnd 7	Rnd 8	Rnd 9	Rnd 10	Rnd 11	Total
U8 Open												
Altman Joshua	1	1	0	1	1	½	0	1	½	0	0	6
Sanitt Leo	0	1	0	1	1	0	1	½	1	½	0	6
Verma Aditya	1	1	1	0	0	1	½	1	1	½	1	8
U10 Girls												
Davidson Laura	0	0	1	1	0	0	½	0	½	0	0	3
Gilbert Isabelle	0	1	0	½	0	0	1	0	0	½	0	3
U10 Open												
Kalavannan Koby	1	0	½	1	½	1	0	½	½	1	0	6
Zhang Anthony Y	1	½	1	0	½	0	1	0	1	1	0	6
Zhang Zheming	½	½	0	1	1	1	1	1	0	0	½	6½
U12 Girls												
Kalaiyalahan Akshaya	1	0	1	1	0	1	0	1	0	½	1	6½
Ressel Eva	0	½	1	½	0	1	0	0	½	1	1	5½
U12 Open												
Higgs Joshua	0	½	1	1	0	1	0	0	1	½	0	5
Rajesh Gorak	½	0	0	1	1	0	½	0	½	1	0	4½
Tarhon Brian	1	0	½	½	1	½	½	½	0	1	1	6½
Wadsworth Matthew J	½	½	1	1	1	½	½	1	½	1	1	8½
Zhou Yang-Jian	0	1	0	½	1	0	1	0	0	1	1	5½
U14 Girls												
Keen Cosima C	0	½	0	0	1	1	1	½	0	1	½	5½
U14 Open												
Abbas Daniel	1	0	½	1	0	½	0	0	½	1	1	5½
Balaji Ananth	0	1	0	0	1	½	1	0	1	1	½	6
Fitzgerald Robert C	0	0	1	1	1	½	0	0	½	0	½	4½
Haria Ravi	1	½	0	½	0	1	½	1	1	½	0	6
Horton Andrew P	1	0	0	1	1	1	1	0	0	0	½	5½
Malhotra Tarun	1	0	1	0	1	½	0	1	½	½	½	6
Redman David J	0	1	0	1	½	0	0	1	1	0	1	5½
Taylor Adam C	1	½	0	1	½	0	1	0	1	0	1	6
U16 Girls												
Head Louise	0	0	1	0	½	1	0	½	1	½	½	5
Hoare Amy B	1	0	½	0	½	0	1	1	0	½	1	5½
U16 Open												
Batchelor Peter J	1	0	½	½	1	0	1	½	0	1	½	6
Foo William J	0	0	1	1	0	0	½	0	1	½	1	5
Hackner Oskar A	1	½	½	½	1	½	0	0	0	0	1	5
Zhang Roy Yinian	½	½	0	0	1	0	1	½	0	½	0	4
U18 Girls												
Stepanyan Astghik	0	1	0	1	0	0	½	½	½	½	0	4
U18 Open												
Sathyanandha Sarav'n	0	0	1	0	1	0	1	0	0	1	1	5
Whitfield Craig M	0	1	0	1	0	0	½	1	0	1	½	5
Zhou Yang-Fan	1	1	½	0	0	1	1	1	0	½	1	7
RND TOTAL	17	15	15½	20½	19	15	18½	15	15	19½	18½	188½
%	52%	0%	0%	0%	0%	0%	0%	0%	0%	0%	0%	50.40%

ECF News

AGM 2012 Report - from Mike Gunn

At the AGM the following directors were elected -

President: Roger Edwards
Non-Executive Chairman: Mike Gunn
Finance Director: Chris Mattos
Director of Home Chess: Alex Holowczak
Director of Junior Chess: Phil Ehr
Non-executive Director: Jack Rudd
Non-executive Director: Sean Hewitt

This means we have 3 vacancies for Directors - Chief Executive, Director of International Chess & Director of Membership and Marketing

The Board meeting before the AGM agreed that I (MG) would cover the CEO's duties and Sean would cover the DIC's duties until such time as the board fills these vacancies (hopefully soon). Although we are in contact with a number of individuals who may fill these roles, any other ECF members who would be prepared to take on any of these roles should contact the Non-Executive Chairman as soon as possible.

Other Officers elected were -
FIDE Delegate: Nigel Short
Chairman of Governance Committee: Chris Majer
Member of Governance Committee: Richard Haddrell
Member of Governance Committee: Andrew Leadbetter
Chairman of Finance Committee: Mike Truran
Member of Finance Committee: Ray Clark
Member of Finance Committee: Ian Reynolds

The meeting received reports from directors and officers. It had proved impossible to present audited annual accounts to the meeting because the draft accounts were deemed unacceptable by the Board and then illness of the relevant officer meant that there was insufficient time to resolve the problems in the accounts before the meeting. Other directors reported the successful (to date) introduction of the new membership scheme and successful activities in the areas of Home Chess (including the British Championship), Junior Chess and the fielding of teams in International events.

A vote of thanks to the outgoing officers was passed. Although it is perhaps invidious to single out a single person, it should be said that a par-

ticular tribute was paid to retiring CEO, Andrew Farthing for his work on the new membership scheme.

Motions to establish an extra Board post of Director of Women's Chess and to discontinue the grading of members' games played overseas were defeated.

Motions were passed to disregard certain ideas proposed in an election statement and to instruct the Board to carry out an investigation into the duties carried by the ex-President representing the ECF in Istanbul (and if appropriate request the return of expense payments).

The meeting approved Standards of Conduct for ECF Officials and an ECF Complaints procedure. The meeting extended the scope of the Standards from documents or remarks made by ECF Officials in the course of their work to statements made on "public media, social media sites and personal blogs".

It was agreed to proceed with the plans to split the ECF into charitable and non-charitable parts and to call an EGM in January or February 2013 to consider proposals for this.

It was agreed to change the ECF's financial year end from 30 April to 31 August.

Report on ECF Board Meeting 17/10/12

The following directors and officers attended: Roger Edwards, Mike Gunn, Chris Mattos, Alex Holowczak, Phil Ehr, Sean Hewitt, Nigel Short, John Philpott and Chris Majer.

It was agreed to advertise the three vacant directorships (Chief Executive, Director of Membership and Marketing, Director of International Chess) with a closing date 2-3 weeks away to enable appointments to be made at the next Board Meeting (13 November).

The following Manager and Officer Appointments were made:

- ♦Company Secretary John Philpott
- ♦Strategic Planning Officer Stephen Jones
- ♦Sport and Recreation Alliance Representative David Sedgwick
- ♦Minutes Secretary David Eustace
- ♦Voting Register Officer John Philpott
- ♦Manager of Grading and Rating Chris Majer
- ♦Manager of Congress Chess Bruce Holland

- ♦Manager(s) of Women's Chess Jovanka Houska/Sabrina Chevannes
- ♦Manager of the British Chess Championships Lara Barnes
- ♦Chief Arbiter David Welch
- ♦Curator of Equipment David Welch
- ♦Controller, National Club Championships Julie ♦ Johnson
- ♦International Rating Officer Lawrence Cooper
- ♦Manager of Arbiters (International) David Sedgwick
- ♦Junior Directorate Business Manager Jim Wadsworth
- ♦Junior Trip Co-ordinator Debbie Taylor
- ♦Junior Development Officer Angela Eyton
- ♦National Head Coach Nicholas Pert
- ♦Manager, Certificate of Excellence Peter Turner
- ♦Senior Controller, National Schools Chess Championships Richard Haddrell
- ♦National Secondary Schools Coordinator Neill Cooper
- ♦Assistant Manager for Primary Schools (North) Julian Clissold
- ♦Financial Controller John Philpott
- Chairman of Awards Committee Roger Edwards

In a number of other cases discussions were ongoing with incumbents about their continuing in post. There are also several vacancies which will be advertised. The Board agreed to give 12 months' notice that it will be closing the ECF adjudication service.

Chris Mattos will be taking responsibility for carrying forward proposals to split the ECF into charitable and non-charitable parts. He will also be meeting with John Philpott and visiting the office in connection with producing ECF accounts.

The Board agreed with the Non-Executive Chairman's proposal for investigating the ex-President's duties and expense claim for his trip to Istanbul.

100th British Chess Championships - tender invitations

The Federation invites tenders for producing the following at the above event which is to take place at The Riviera Centre, Torquay from 28th July to 9th August 2013. The main play is from Monday 29th July- Friday 9th August. Being the centenary of the event, it is hoped that there will be a large increase in entries and interest.

The English Chess Federation Certificate of Merit

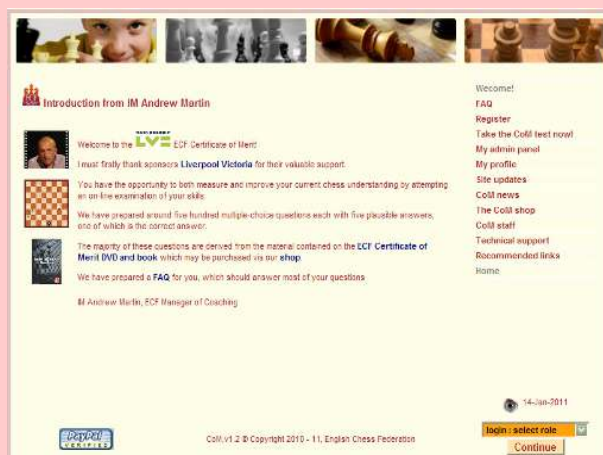
The Certificate of Merit (COM) is centred on a number of online tests, which enable chess students to measure their progress and to earn certificates and badges. The tests are taken entirely online, and payments for the credits can be made online or by cheque. Examinees can practice as many times as they wish before they take the CoM test. All questions are multiple-choice, and the result comes through automatically - the certificate is issued by email and the button badge for the particular level is sent out by the ECF Office shortly afterwards. Please see the shop on the ECF website www.englishchess.org.uk for details of purchase of the full package or individual items.

Each credit costs £6 or £150 for 30. Once a student has paid for a credit, he or she can then take the test as many times as necessary until a pass is achieved.

Students can track each question answered wrongly and find out the correct answer.

The answers now have an explanation included (where appropriate)

There is also a package available of many goodies - for details, go to www.certificateofmerit.org.uk
For further information contact the ECF Office:
01424 775222 / com@englishchess.org.uk
www.certificateofmerit.org.uk



- Website / Webmaster
- Daily bulletin .pgn files/games inputting
- Commentary on the live games
- Bookstall
- Junior coaching

Any bids should be in writing, and should be sent to the Federation Offices at Battle in a sealed envelope marked clearly 'Championship Bid' along with an accompanying email to The Congress Manager. They should arrive no later than Monday 21st January 2013 and clearly state the terms of the prospective tender. Any bids not received by that date may be rejected.

A sub-committee will consider each bid and will advise all parties in writing with letters or emails posted no later than Friday 1st February 2013 whether their bid has been successful. The bidding procedure is confidential, the Federation may accept/reject any bid without assigning a reason and will not enter into any correspondence relating to the bidding procedure.

- Lara Barnes, Manager of The British Championship 2013

County Championship Finals - notice

In accordance with rule D3.1, the dates of the Final Stages of the County Championship must be varied by 31st October, if they're going to be varied at all. This notice is formally signalling my intent to vary the date. The precise known date of the Final is unknown, for the reasons laid out below.

It is my intention to run an event at a hotel, somewhere in the Midlands, on the following basis:

Saturday - Finals of the County Championship
 Sunday - Counties' Team Rapidplay Championship (open to all counties)

The British Grand Prix will be held at Silverstone on 30th June, according to a provisional schedule. The hotels in the area of Northamptonshire - one of the areas in which we are looking to host this event - will understandably not be free on this weekend. This isn't to say a hotel in another area might be available on that date, but that is in the process of being determined.

There is an e2e4 event in a similar area scheduled for the weekend of the 7th July, which usually

attracts over 100 players, and I believe a clash between the two events is likely to reduce the pool of players available for the counties in the Final, which will be a detriment to the event.

The following weekend, of the 14th July, looks comparatively free of other planned events that are likely to be competing for the same players as those competing in the Finals of the County Championship.

Given the current uncertainty over the venue for the event, it is impossible for me to announce the date on which it will be held at present, other than to say that it will not be on the first Saturday (or weekend) in July.

I realise that this is not an ideal situation, but it is one I will seek to resolve as soon as possible.

- Alex Holowczak, ECF Director of Home Chess



Results Round-Up

26th Leamington Rapidplay

... played on the 9th September 2012. 105 players competed in this year's event. Congratulations go to new FIDE International Master Ameet Ghasi on his outright victory in the FIDE Open section, in what proved to be one of the strongest fields of players we have had at Leamington for a long time.

Many thanks to controllers/arbiters Bruce Holland (also joint-organiser), Alex Holowczak, Adrian Elwin and Neville Belinfante for their excellent support.

Also congratulations to prize-winning local players Tom Darling, Tim Lawson, Bernard Visgandis and Zosia King.

- Guy Greenland, Congress Director

Bolton Rapidplay results

90 competitors attended the 31st Bolton Rapidplay, held at the Bolton Ukrainian Club on Sunday 11th November 2012. In the Open section, Robert Shaw beat Pavel Besidin in Round 2, but two draws in the later rounds gave Pavel the opportunity to catch up, so the first prize was shared.

OPEN

1st= Robert Shaw (Buxton) & Pavel Besidin (South Birmingham) 5pts /6

3rd Ali Jaunooby (Denton) 4.5pts

Under 180 Grading Prize

Tomasz Czaja (Culcheth) & Paul Fletcher (Woodseats) 4pts

23 entrants. £290 prize fund

MAJOR (165 & under)

1st Mick Connor (Great Lever) 5pts /6

2nd= Adam Tyton (Bolton), Stephen Mulligan (Penketh), Farshad Ai (Pheonix) & GP & Michael McDonagh (Cheshire) 4.5 pts

28 entrants. £290 prize fund

KNIGHTS (135 & under)

1st Jacob Boswell (Cheddleton & Leek) 5.5pts / 6

2nd Reg Clucas (Altrincham, & Hale) 5 pts

3rd= Karl Moorcroft (3Cs), David Sugden (Hebden Bridge), Andy Coe (Stockport) & Jan Kitshoff (Culcheth)

Under 120 & 105 grading prizes

Jennifer Neil (Bolton) & Kenneth Parkin (Enigma)

4.5pts

39 entrants. £330 prize fund

- Rod Middleton

Paignton Congress - important!

The 63rd DCCA Paignton Congress will be held at the Livermead House Hotel, Torbay from 1st - 7th September 2013.

Further details regarding facilities available at the hotel will be on the Chess Devon website - <http://www.chessdevon.co.uk/> - in the next few weeks.

The congress entry form will be issued as usual in March 2013

Candidate Master Joshua Altman!

Sean Hewitt, Acting International Director and IM Lawrence Cooper, former International Director, pose with Joshua Altman, aged 8, England's newest and youngest Candidate Master!



Joshua earned the title from his Bronze Medal performance in the European Youth Chess Championships. He is the youngest English player in living memory (possibly ever) to hold a FIDE title. His rating card: ratings.fide.com/card.phtml?event=426210

Well done, Joshua!

30th Bury St Edmunds Congress - report/results

- from Bob Jones



We had a stroke of luck in the final round, when the oldest competitor, 88-year old John Dawson from Linton, Cambridgeshire, was paired against the youngest, 5-year old Jeff Tomy from Watford. The computerised pairings were then checked manually and found to be correct. So before the round started, I contacted the local paper, the East Anglian Daily Times, who arrived within minutes and managed to capture the 83-year age gap for the front page of the following day's edition.

134 entrants each played five games in four graded sections. Entrants included 20 juniors, the youngest of whom (Jeff Tomy) was only 5 years old. Two of the four sections were won by female players.

OPEN

1 (International Master) Harriet Hunt Cambridge - 4½ points

2= (International Master) Richard Tozer Cambridge & (FIDE Master) Neil Carr Writtle - 4 points

MAJOR

1 Ed Kernohan Cambridge - 4½ points

2 Philip Hutchings Manningtree - 4 points

3= Anthony Ball Letchworth, Richard Donaghay Ely, Mark Szymanski Ely & Alan Norman Cambridge - 3½ points

INTERMEDIATE

1 Warren Kingston Lowestoft - 4½ points

2= Rob Kelly Manningtree, Greg Tebble Norwich, Richard Newman Cambridge, Scott Taylor Bury St Edmunds, Charles Richmond Newmarket & Mark Nettleton Lowestoft - 3½ points

MINOR

1 Jelena Tjurina Wisbech - 5 points

2= Karina Chan Norwich, George Meligonis

Cambridge, John Bradley Dunmow & Roger Smith Ipswich - 4 points

A total of £2,010 was paid out in prize money, with the top individual prize of £450 going to Harriet Hunt (see above)

A summary of the views and issues of ECF Gold Members

Thanks to those who responded to my previous communication and to most of you for your good wishes.

On the topic of charity status for ECF, members who commented were mostly in favour, some welcoming the consequent division of professional and amateur chess activities and the possible opportunities for re-shaping ECF structures. A smaller number opposed the idea, one regarding chess playing as an unworthy object for charitable status and others regarding the advantages of charity status as being outweighed by confusion or tensions between two separate bodies which would be created in the process.

Issues raised by members included (in descending order of frequency) their concern over the perception of a limited ECF interest in senior chess, a desire to change the ECF grading system to one more in line with FIDE Elo ratings, and better communications from the ECF on its decisions and policies, e.g. the rapid production and publication of draft minutes of council or Board meetings. I will bring these to the attention of appropriate board members.

There were also a number of complaints about delays or errors relating to the new membership scheme, particularly the database. On this, I understand that office staff are currently overloaded and sometimes hampered by members not supplying the full requested information. I hope we can all exercise some patience until the new system is making less demands on office staff.

- Bill Armstrong Email: ecfgoldrep@hotmail.co.uk



Prize winners - Scarborough 2012

	Name	Club	Score	Prize
Open				
1st=	Jonathan Hawkins	Leam Lane	4.5	£500.00
2nd	Jim Burnett	Doncaster	4	£125.00
	Jos Wooley	York RI	4	£125.00
	Mark Talbot	Wigan Knights	4	£125.00
	Andrew Ledger	Sheffield	4	£125.00
British place - Jim Burnett				
	Jos Wooley			
	Mark Talbot			
Grading 1	John Garnett	Elmwood	3.5	£25.00
	David Jarmany	Cockermouth	3.5	£25.00
Grading 2	Paul Johnson	York RI	3.5	£25.00
	Ryan Burgin	Stannington	3.5	£25.00
Junior	Jean-Luc Weller	York RI		£50.00
Major				
1st	Paul Kendall	Woodbridge	4	£170.00
1st	David Patrick	Courier	4	£170.00
1st	R Greatorex	Llangollen	4	£170.00
	Anastasios Nezis	Jorvik	4	£170.00
	Richard Allis	York RI	4	£170.00
	Paul Carlucci	Morley College	4	£170.00
Grading 1	Ian Stephens	Liverpool	3	£13.00
	Glyn Ward	Peterborough	3	£13.00
	John Cawston	Lady Anne M'ton	3	£13.00
	Karl Potter	Latimer	3	£13.00
Grading 2	Robert Clegg	Huddersfield	3	£50.00
Junior	Zheming Zhang	Jesmond	3.5	£50.00
Intermediate				
1st	Robert Dean	Pudsey	4.5	£500.00
2nd=	Chris Willey	Rotherham	4	£250.00
3rd	Donal Heron	Wandering Dragons	3.5	£21.00
	David Lord	Leeds	3.5	£21.00
	Michael Connor	Gt Lever	3.5	£21.00
	Richard Harris	Darlington	3.5	£21.00
	Philip Harlow	Wigton	3.5	£21.00
	Andy Corbyn	Guisborough	3.5	£21.00
Grading 1	Andy Ross	Rose Forgrove	3.5	£31.00
	Trevor Blower	Barrow	3.5	£31.00
	Steven Allott	Grimsby	3.5	£31.00
	Peter Hoare	Eccelsall	3.5	£31.00
	Philip Ellis	Eccelsall	3.5	£31.00
Grading 2	Norman Andrews	York	3.5	£25.00
	Peter Hepworth	Huddersfield	3.5	£25.00
Junior	Peter Hepworth			£50.00
Minor				
1st	Amy Milson		4	£112.00
	Peter J Smith		4	£112.00

	John Manger		4	£112.00
	Tim Jones		4	£112.00
	Michael Harper		4	£112.00
	Alec Grice		4	£112.00
	David Richardson		4	£112.00
	Christopher Farrar		4	£112.00
	Nigel Hepworth		4	£112.00
Grading 1	T S Allen		3.5	£50.00
Grading 2	Peter Housden		3.5	£25.00
	David Summerland		3.5	£25.00
Junior	Amy Milson		4	£50.00
Foundation				
1st =	Barry Williams	Aughton	5	£375.00
	Stephen Lee	SASCA	5	£375.00
3rd	William Egan	Scunthorpe	4	£63.00
4th =	Gary Clarke	Consett	4	£63.00
	Lee Bullock	Hackney	4	£63.00
	Joseph Dalton	Jesmond	4	£63.00
Grading 1	Jim Waddington	Bolton	3.5	£25.00
	Steve Larkin	Tynedale	3.5	£25.00
Grading 2	Barry Fulthorpe	Leeds	3	£16.33
	Kenneth Marsden	Pudsey	3	£16.33
	Ian Palmer		3	£16.33
Junior	Joseph Dalton	Jesmond	4	£50.00

24-hour Chessathon with Carl Portman

Carl Portman from Banbury Chess Club is playing chess for 24 hours to raise money for the Cardiac Physiology Fund and also raise the profile of chess. He is playing from 10am on 24 November to 10am on 25 November at the Castle Quay shopping centre in Banbury, Oxfordshire. He will be playing several opponents and (hopefully) members of the public also. The chess will be quickplay at various time limits. Donations can be made online at <http://www.justgiving.com/Carl-Portman> and he hopes to raise at least £500.00

Chess Moves - corrections to the July/August edition

P1 - Caption under photograph

The caption states: "All smiles ... Mike Gunn presents the U180 Trophy to Middlesex Captain Ananthanarayan Balaji - Alex Holowczak looks on" - please note that the captain of Middlesex's Open and U180 teams is Anthony Fulton, NOT Ananthanarayan Balaji, who is a promising Mx junior.

P1 - Caption regarding U180 Trophy

The U180 is actually a plate called the Ron Banwell Trophy. It was not available on the day so a substitute trophy was awarded. The caption therefore is misleading as it implies trophy received is the U180 trophy.

Opening sentence

This suggests that Middlesex has won 28 titles but goes on to state Middlesex has won their 29th title. The opening sentence should read: "Middlesex is the winningest team in the history of County Chess dating back to 1908 but since 1989 hadn't been able to add to their 28 titles, their longest barren spell."

- thanks to Anthony Fulton, Middlesex Open and U180 captain

Trans-Europe Chess Express

The German Chess Federation and German Railway Company (Deutsche Bahn) hosted the Trans-Europe Chess Express in Potsdam, Germany, 13-14 Oct. It was a nine-round rapidplay of teams from England, Russia, Poland, Austria, Switzerland, the Netherlands, the Czech Republic and Germany.

Each team played with one Grandmaster, three Under 16 players and four railwaymen. A ninth team came from the Emanuel Lasker Gesellschaft.

Grandmaster Nigel Short led England's team. The other notable Grandmasters in the tournament were Jan Timman, Anatoli Karpov, Vlastimil Hort, Dr. Robert Hübner and Woman Grandmaster Elisabeth Pähtz.

Travel, accommodation, full board and cultural events were provided by the generous and gracious hosts, for which the players are grateful. Results and a flavour of the event may be found at the excellent website [www.trans-europe-chess-express.com]

4NCL 2012-13 Weekend One 3rd-4th November 2012

- from Lawrence Cooper

The new 4NCL season got underway this weekend with the top two divisions being held in Sunningdale and Division Three South at Wokefield Park. Division Three North will be played at Wychwood Park near Crewe on 24th and 25th November.

Round 1

The defending champions, Wood Green 1 fielding seven grandmasters, started with a convincing 7-1 victory over newly promoted BCM (formerly AMCA) Dragons, with Richard Webb and Ken Coates holding Jonathan Rowson and Nick Pert to draws on boards two and three to avoid the whitewash. David Howell beat James Holland on top board in one of the youngest pairings seen on board one in the 4NCL top division.

The remaining three matches were much closer, e2e4.org.uk 1 had a surprise 5-3 victory over

Guildford 2 with wins for Peter Sowray, Alan Byron and Rasa Norinkeviciute, Cheddleton beat Sambuca Sharks 5-3 with quick draws on the top two boards and 3/3 with the other whites. Sambuca's victory came courtesy of Clement Sreeves who beat grandmaster Enrique Rodriguez Guerrero. Barbican 1 beat Cambridge University 4.5-3.5 with wins for Matthew Turner, Jonathan Rogers and Mark Ferguson. Nathan Alfred beat John Cox and Sabrina Chevannes (fresh from her England Olympiad debut in Istanbul) defeated Ingrid Lauterbach for Cambridge.

In Division 1b Guildford 1 scored a commanding victory against Warwickshire Select. Guildford fielded two new players on boards one and two; grandmasters Gawain Jones and Robin Van Kampen. Gawain drew with Ameet Ghasi, who had been very close to a GM norm at the recent Basingstoke e2e4 event and the other solitary half point came on board seven with Paul Lam drawing against Alberto Suarez Real.

Jutes of Kent had a convincing win against Wood Green 2, scoring 5.5/6 on boards two to seven to offset losses on top and bottom board, whilst White Rose defeated South Wales Dragons by the same score including a win for James Adair who was recently awarded the FM title. By far the closest match of the round was a 4-4 draw between Barbican 2 and Blackthorne Russia with Samuel Franklin (who had also recently been awarded the FM title) winning on top board against Adam Hunt and Kanwal Bhatia winning on bottom whilst Richard Bates and Bob Eames replying for Blackthorne.

In Division 2a e2e4.org.uk 2 emulated their first team with a victory against a much higher rated Oxford team with wins for John Garnett, Richard Webster and Theodore Dias. Despite the loss, it was heartening to see three of our most promising juniors; Marcus Harvey, Anna and Maria Wang all playing in the Oxford first team.

The only match in the division that went according to rating was Pandora's Box Grantham's 5-3 victory over Spirit of Atticus. Wessex overcame a deficit of almost one hundred points per board to defeat Anglian Avengers 1 4.5-3.5 with the match being decided on a successful 10.2 claim by the Wessex board six after wins for Gavin Lock and Bruce Jenks. Poisoned Pawns edged home 4.5-3.5 against Rhyfelwyr Essyllwg 1 with wins on boards four, five and seven and losses on boards one and

eight.

Division 2b matches all went according to rating. The ADs defeated the slightly more youthful KJCA Kings with wins for John Richardson, Ian Snape and Mark Stockwell, Kings Head narrowly defeated 3Cs 4.5-3.5 with wins for Felix Kwiakowski, Rik Thomas and Ananthanarayanan Balaji. Bristol had a comfortable 6-1.5 victory over North East England (0.5 game point deduction for NE for defaulting board eight) despite having a female player, Sue Maroroa who has recently transferred to England, in the team. A relatively youthful Barbican Youth team lost 3.5-4.5 to White Rose 2 despite wins for Guy Moss and Ashley Stewart. Jean Luc and Pierre Weller were amongst the White Rose winners.

Round 2

The first real clash of the season was between Cheddleton & Barbican 1. Apart from Wood Green & Guildford these were the only two teams with a realistic chance of competing for the title. The teams were evenly matched but wins for Jonathan Parker and Sam Franklin against Keith Arkell and Robert Bellin resulted in a 5-3 victory for Barbican. Three of the games went to the final hour and two ended with barely minutes of the playing session to go.

Quite possibly the most amazing result in an eight board match in the history of the 4NCL occurred in what appeared to be a routine match for Wood Green 1 against e2e4.org.uk. The average of the teams were 2504 and 2235 and the closest game on rating was 184 points whilst the biggest gap was 393 on board eight. Despite this it was e2e4 who were pressing on several boards but ultimately Lawrence Trent was able to hold a draw a pawn down in a rook ending against Mark Josse which resulted in a 4-4 drawn match with no decisive games! This was a great result for e2e4 captain Sean Hewitt and the team of Alexei Slavin, Raja Panjwani, Peter Sowray, James Jackson, Robert Willmoth, Alan Byron, Mark Josse and Rasa Norinkeviciute.

Guildford 2 were held 4-4 by BCM Dragons who scored well on the lower boards to cancel out Guildford's supremacy at the top and Cambridge defeated Sambuca Sharks 5-3 despite losing the top two boards.

Division 1b saw Guildford 1 defeat Barbican 2 6.5-1.5 whilst their nearest rivals had a surprisingly

convincing 7-1 victory over Jutes of Kent. This was a very impressive result even allowing for the fact that Jutes aren't always at their best on Sundays! The other two matches were very close, Warwickshire Select had an impressive victory against Blackthorne Russia with wins for John Pitcher (against IM Richard Bates), Henrik Stepanyan (against FM Bob Eames) and Ali Roy whilst South Wales Dragons overcame an average rating deficit of 95 points to triumph 4.5-3.5.

In Division Two Pandora's Box Grantham and Wessex are the only teams with two match victories in Division 2a. Wessex overcame Spirit of Atticus 5-3 and Pandora's beat Anglian Avengers 4.5-3.5. Oxford and Rhyfelwyr Essylwg got off the mark with wins against Poisoned Pawns 1 and e2e4.org.uk 2 4.5-3.5 and 5.5-2.5 respectively.

In Division 2b Kings Head finished the weekend with two match victories after defeating The ADs 5.5-2.5. Bristol were held 4-4 by White Rose 2 despite their two IMs winning the top two boards. 3Cs bounced back from their narrow defeat on Saturday with a 5.5-2.5 victory over KJCA Kings whilst Barbican Youth overpowered North East England.

Division Three South

Play took place at Wokefield Park as a thirty-seven team swiss. After the first weekend the following teams recorded two match victories: Fermented Sharks, FCA Solutions 1, Cambridge University 2, Anglian Avengers 2, Leeds University Old Boys, Guildford 3, Brown Jack, Ashfield-Breadsall, Rhyfelwyr Essylwg 2 and BCM Rhinos (2) whilst Oxford 2 and Celtic Tigers 1 have three points. In round 1 Brown Jack whitewashed Banbury Bulldogs albeit the latter team defaulted on bottom board giving an unusual match score of 6-0.5 as a half point is deducted for each defaulted board. They then rattled up a 6-0 score line on Sunday with e2e4.org.uk being the unfortunate victims for whom Joshua Altman, who won the bronze medal at this August's European Youth and was recently awarded the Candidate Master title, made his debut for e2e4.org.uk 4.

In conclusion, I would like to thank both venues for providing excellent playing and accommodation facilities and the arbiters, game inputters, live board operators and webmaster for ensuring the chess ran smoothly and that the website was regularly updated. The weekend's results and league tables can be found via this link, and all the games from the weekend should be on the website to download.

Joshua Altman at the AGON London FIDE Grand Prix

- from Lorin D'Costa

Thursday 20th September marked the opening ceremony of the first FIDE Grand Prix, hosted by Andrew Paulson and AGON, which happens to be held in London in Somerset House, by the embankment. Twelve top Grandmasters are taking part in the event: Hikaru Nakamura (USA), Vassily Ivanchuk (UKR), Alexander Grischuk (RUS), Veselin Topalov (BUL), Wang Hao (CHN), Boris Gelfand (ISR), Peter Leko (HUN), Anish Giri (NED), Shakhriyar Mamedyarov (AZE), Leinier Dominguez Perez (CUB), Michael Adams (ENG), Rustam Kasimdzhanov (UZB).



The event opened with a blitz game between the players, but a mini-event was also held alongside: 8 year old Joshua Altman from England, fresh from his Bronze Medal in the European Under 8 championships in Prague held back in August, grabbed his opportunity to play a super GM with a 5 minute blitz game against the former world championship challenger, GM Boris Gelfand from Israel. Josh defied the whopping 2738 rating of his illustrious opponent and gained an advantage in the middlegame, but ended up losing on time. Still, this caught the eye of many and a crowd gathered around Josh as he took on other strong players- GM John Nunn, GM Gawain Jones (whom he was a whisker from holding to a draw) and IM Ali Mortazavi to name a few.

However the real sensation was Josh's game against GM Luke McShane, rated 2713 and one of Englands top players. Josh even managed to beat Luke with the white pieces! In Lukes defence, he was spending the whole game chatting with GM Gawain Jones, but he did play to some strength. The ironic thing about this is that Luke, now 28 years old, was a famous prodigy himself (indeed winning the world Under 10 title as an 8 year old in Duisburg, Germany, back in 1992) and was famed for beating strong players at a ridiculously young age. Luke was extremely sporting, even allowing me to write this article and shaking Josh's hand and wishing him good luck in his future chess career.

The games - annotated by Lorin D'Costa

Altman, Josh - Gelfand, Boris (2738) [B51] - AGON London opening reception , 20.09.2012

1.e4 c5 2.Nf3 d6 3.Bb5+ Nd7 4.0-0 a6 5.Bxd7+ Bxd7 6.Re1 Nf6 7.Nc3 g6 8.d4 cxd4 9.Nxd4 Bg7 10.Be3 0-0 11.Qd2 Rc8 12.h3 b5 13.Bh6 Rc5 14.Bxg7 Kxg7 15.Nb3 Rh5 GM Gelfand was presumably assuming he would just play something like Qc8 and Bxh3 with a winning attack, but Joshs next move kills all that. 16.Re3 Qb6 17.Rae1 Re5!? white is threatening Nd5 anyway and the rook was misplaced. 18.Kh1 [Boris may have expected 18.f4 but actually white can play this, as after 18...Nxe4 he has 19.Qd4! (19.Nxe4 Rxe4 wins black a pawn.) 19...Qxd4 20.Nxd4 Nxc3 21.fxe5 Nd5 22.Ra3 Bc8 23.exd6 exd6 24.Rd3] 18...b4 19.Nd5 Nxd5 20.exd5 Rf5 [20...Rxe3 21.Rxe3 e5 22.dxe6 fxe6 was better.] 21.Rxe7 [21.f3 and black is under some pressure, Rybka gives +0.42 around here.] 21...Rxf2 22.Qd4+ Qxd4 23.Nxd4 white is still doing well. 23...Bc8 24.R1e2 Rxe2 25.Nxe2 Kf6 26.Re3 Bd7 27.Rb3 a5 28.Rd3 here Josh lost on time. Boris also sportingly said 'in 5 years time for sure I will need to play a serious game against this boy to beat him!' a glowing review from such a respected player. 0-1

Altman, Josh - McShane, Luke (2713) [D02] - AGON London opening reception, 20.09.2012

1.d4 d5 2.Nf3 Nf6 3.Bf4 Bg4 4.e3 c5 5.c3 Nc6 6.Bd3 e6 7.Nbd2 Bd6 8.Bg3 0-0 9.0-0 Qe7 10.Qc2 c4 11.Be2 Bf5 12.Qa4 a6 13.Nh4 Luke broke away from his conversation with GM Jones to say to Josh 'that was a good move'. 13...Bg6 14.Nxg6 hxg6 15.Bf3 b5 16.Qd1 Bxg3 17.hxg3 g5 18.e4 dxe4 19.Nxe4 Nd5 20.Qd2 f6 21.Rfe1 Qf7 22.Nc5 Rae8 Luke sets a trap... 23.Kh2! [Josh doesnt fall for the tempting 23.Nxe6 Rxe6 24.Bxd5 Rxe1+ its check, so black wins a piece. 25.Rxe1 Qxd5] 23...Kh8 24.Rh1 g6 25.Kg1+ Kg8 26.Re1 Nd8 27.Nxa6 Nb7 Josh has won a pawn here, but theres plenty to do to break down the black position. 1-0

The Chess Moves Bookshelf

IMPROVING WITH AGE?

by Andrew Farthing

One of the perennial questions in chess is, 'How do I improve?' The usual answer is an expansion on the 'How do I get to Carnegie Hall?' question ("Practice!"), typically adding to practice - particularly against slightly stronger players - such elements as:

- analysis of one's games;
- playing through master games (perhaps taking the winning side and trying to guess the next move each time);
- solving tactical exercises;
- studying theory (particularly endgames and openings)

This is all well and good, but a more pertinent (and disturbing) question for the player no longer in the first flush of youth is, 'Is it even **possible** for me to improve?' There are many of us out there whose grade has remained stubbornly flat, give or take minor fluctuations over the years, for a very long time.

It's a serious question. To a large extent, the chess publishing industry depends upon the answer being 'yes', or rather, on sufficient numbers of us **believing** that the answer is 'yes'. Whether this belief is justified by the evidence is not something that can be taken for granted.

Whilst it is implicit in most chess books that improvement is achievable, few authors have focused on the topic of how adult players specifically can approach the task of learning and translating the lessons into better over-the-board results. There are exceptions, of course. Jonathan Rowson, one of the chess world's most interesting thinkers, takes this question of improvement very seriously in his books and reaches some thought-provoking conclusions.

Serious study

Every now and then, a book appears which tackles the subject head on and offers recommendations for the methodology of learning, rather than simply conveying knowledge.

In 2002, Michael de la Maza published a slim volume called **Rapid Chess Improvement - a study**

plan for adult players (Everyman Chess). At the heart of the plan was something called the 'Seven Circles'. In essence, this required the student to obtain a collection of 1,000 tactical exercises (real game positions, not compositions) and systematically solve them through seven cycles of reducing duration: 64 days, 32 days, 16 days, 8 days, 4 days, 2 days and 1 day. By the end of the 127 days, the student will have a much improved tactical vision, based on the pattern recognition achievable with a firmly embedded mental library of positions.

De la Maza's book attracted considerable attention in its time. Rowson and Nunn have both considered it at length in their own works, for example. I'm not surprised by this. The programme is undeniably unusual and admirably focused. Critics have suggested that it is one-sided and that the concentration on tactics is ultimately flawed. The author's counter-argument is that, below master level, tactics are what determine the result of chess games, and significant improvement in this one area will undoubtedly lead to improvement in overall results.

The truth of this is hard to assess. Concentrating on tactics without - for example - learning the basics of endgame technique seems like a recipe for constant disappointment. Imagine how many points and half-points could be lost through poor technique after using tactical means to establish an advantage. De la Maza achieved a rating increase of 700 points (about 80 ECF grading points) in his first two years by following his methods, but the sceptic in me has to point out that he started from a low base (about ECF 80) and large improvement from such a level may just be a part of the initial learning spurt all players go through.

There again, my own personal experience is that establishing a daily routine of solving tactical exercises (perhaps a dozen a day) produced a noticeable improvement in my play and results for as long as I kept up the routine. Finding the time and willpower to persist was the main challenge.

Ultimately, investing the sheer quantity of time into chess work implied by de la Maza is almost bound to make a difference to one's results. Presumably, spending a couple of hours a day for 127 days on virtually **any** form of chess study ought to make **some** difference! The *Rapid Chess*

Improvement method may be better than others - the empirical evidence is lacking - but I can't help feeling that it sucks some of the joy out of the game.

A more rounded approach

Eight years before Michael de la Maza unleashed his seven circles of study hell on the chess world, there appeared a rather more 'human' book called **Chess Master ...at any age** by Rolf Wetzell (Thinkers' Press; 1994).

Wetzell, also an American, applied himself seriously to improving his chess when already more than 50 years old and achieved an increase of 400 rating points (about 50 ECF grading points) over a period of several years. His book is well worth seeking out (used copies are available online). It offers a much more rounded approach than de la Maza's, and I suspect that most players, like me, will find this more attractive.

One of the foundations of Wetzell's approach to chess improvement is developing a library of positions ("images") from one's own games and from published examples, illustrating valuable tactical and positional motifs, endgame lessons, etc. The fact that the 'images' are not restricted to tactics in itself suggests a degree of balance missing from de la Maza, although the underlying principle of improving the student's pattern recognition is broadly the same. De la Maza's methodology demands more active participation - he is demanding that the student solves the tactical exercises - whereas Wetzell is focused more on developing a bank of examples for memorisation. (To be fair to Wetzell, elsewhere in the book, he too extols the virtues of solving tactical exercises on a regular basis.)

I cannot recall that Wetzell's book made any sort of an impact on UK chess reviewers at the time. As an American publication, its availability may have been more limited than its Batsford and Cadogan/Everyman rivals. Perhaps its approach seemed a little too much like hard work. The author requires the student to create hundreds of "flash cards" (for review before each game), each containing one position and a note of the key move(s) and idea. This was a manual process, itself based on further study (in order to identify the positions), including the creation by hand of chess diagrams. To this end, Wetzell creates a simplified set of easy-to-draw symbols for the

chess pieces. All of this seems rather quaint now, when most players will have access to a computer, chess software and a printer, all of which would make the construction of professional-looking flash cards much easier. Perhaps improved technology means that this is an idea whose time has come?

Yusupov's chess course

In the interests of testing the proposition that middle-aged players can improve their chess through study, I have embarked on a lengthy programme of lessons set out in a series of books by GM Artur Yusupov (published by Quality Chess). The series is based on a study programme prepared by Yusupov for his chess academy in Germany in 2003.

Quality Chess have been publishing the books (8 out of 9 have been released to date) in a rather confusing order. The programme is structured on the basis of three volumes per level, roughly aimed at players under 1500 Elo, under 1800 Elo and under 2100 Elo (ECF 110, 145 and 180 respectively). The publishers issued volume 1 of the first level, then volume 1 of the second, then the third, before returning to volume 2 of the first level and so on. Had it been me, I should have chosen to release the level 1 books first, then level 2, etc.

To take the course in full and in sequence, the books are:

- **Build Up Your Chess 1 - The Fundamentals**
- **Boost Your Chess 1 - The Fundamentals**
- **Chess Evolution 1 - The Fundamentals**
- **Build Up Your Chess 2 - Beyond the Basics**
- **Boost Your Chess 2 - Beyond the Basics**
- **Chess Evolution 2 - Beyond the Basics**
- **Build Up Your Chess 3 - Mastery**
- **Boost Your Chess 3 - Mastery**
- **Chess Evolution 3 - Mastery** (due January 2013)

As is to be expected with Quality Chess, these are beautifully produced books. Each consists of 24 lessons, all in the same format - 5 or 6 pages explaining the ideas and motifs for that lesson and illustrating these with a series of positions which Yusupov asks the student to treat as exercises to solve. The page layout facilitates covering the text so that the reader's eye is not drawn to the moves before tackling the position for him- or herself. This is followed by a set of 12 addi-

tional positions on the same theme, presented as puzzles to solve, with the answers in the following pages.

Yusupov instructs the reader to set up each position (from the lesson and from the exercises) on a proper chess board and to solve it without touching the pieces. In this way, study reproduces the experience of playing and - I suspect - increases the chances of pattern recognition in competitive play.

It is suggested that each lesson will require 1-2 hours (i.e. 5-10 minutes per position), with a similar investment of time needed to solve the 12 exercises linked to each lesson. Roughly speaking, therefore, each volume implies the need for 50-100 hours' work.

Sensibly, Yusupov varies the themes throughout. The lessons cover six areas of the game - tactics, positional play, strategy, the calculation of variations, the opening and the endgame - but these are mixed up in each book. For example, the first four chapters in the first volume are:

1. Mating motifs
2. Mating motifs 2
3. Basic opening principles
4. Simple pawn endings

Although my grade (in the 140s) would suggest that my jumping-on point should be the "Beyond the Basics" trilogy, I have decided to go back to the fundamentals to ensure that I have a sound platform from which to improve. In the past, my chess studies have been somewhat haphazard, and I am sure that there will be aspects of the 'Fundamentals' from which I shall benefit.

Artur Yusupov was an immensely strong player in the 1980s - a Candidates finalist and number 3 in the world - with a reputation for playing sound, principled 'classical' chess. His collaboration with Mark Dvoretsky produced a series of advanced chess improvement books which are much admired but, for the average player, very advanced. I enter into this chess course confident that I am in safe hands and optimistic as to the outcome. If the editor of *ChessMoves* permits, I shall report back on progress over the months ahead.

My spot in the 2014 London Chess Classic elite event beckons. Watch this space!

Looking for that extra-special Christmas gift?

If you're a regular visitor to the English Chess Federation website at www.englishchess.org.uk and/or the ECF Grading website at www.ecfgrading.org.uk, you may well have noticed some new adverts appearing in the sidebar. In the last couple of months, we've been pleased to welcome --

Chess the Game, creators of a vertical chess set [ChessTheGame.co.uk]; and Chess Maze, one of the largest chess retailers in the UK [ChessMazeInternational.com]



If you visit their websites you'll find hundreds of chess products - something for everyone, irrespective of age, grade, etc. These adverts also provide valuable revenue for the ECF, every penny of which gets ploughed back into English chess. So, if you're searching for a special Christmas gift, or looking for some chess treats for yourself, both retailers are well worth a visit!

- Stephen Jones, *Strategic Planning*

ECF Book of the Year 2012



The choice for 2012 is one of the most original chess books the judges have seen for a number of years. **Move First Think Later** by Willy Hendriks (published by New in Chess, £18.99) manages to be both serious and highly entertaining at the same time.

The subtitle gives an indication of Hendriks subject matter - "Sense and Nonsense in Improving your Chess". The author is an IM and for 25 years a professional chess trainer. He graduated from university with a degree in Philosophy and is very well read in modern developments in neural research, learning theory and associated subjects. Hendriks believes these disciplines now have much to teach us about chess teaching and playing.

As a result he is interested in questions such as, for example, why are all chess players are not grand-masters? Is there a methodology for how strong moves can be found? Or, what is the role of planning? Above all Hendriks offers a substantive criticism of much of traditional chess training and literature, in particular statements such as "Against a wing attack, counter in the centre" which can be misleading generalisations. The judges are well aware that not all readers will readily accept that all his ideas are entirely valid, nor all his propositions sound, but considered that the arguments in the book will stimulate a lively debate on how chess is taught and played.

The book consists of 27 creative and thought provoking short essays on a wide variety of related chess subjects. Each chapter is illustrated by challenging chess exercise positions (certainly not of the routine White to play and win type) which serve to illuminate the text.

All the above describes the book, but does not give an adequate impression of its originality or especially of the stimulation which it provides the reader. Hendriks is also an entertaining writer with wit and a sense of humour, often against himself, which makes the book a pleasure to read.

All these qualities combine to make, *Move First, Think Later* a worthy Book of the Year 2012 winner

- Ray Edwards, Julian Farrand, David Friedgood, 4th October 2012



BATSFORD

Chess Competition

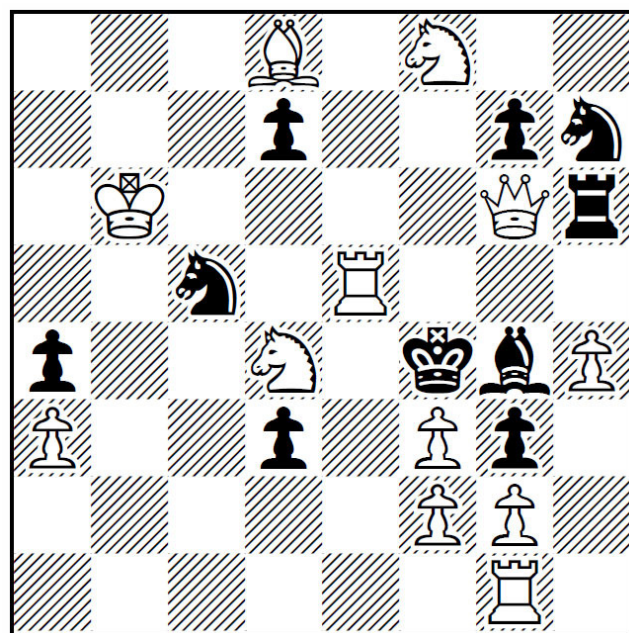
Well done to the Sept/Oct winner
Mr Richard J Nash from Barnstaple
The correct answer was - **1.Ne8**
Here's the next problem ...

Sir Jeremy Morse

Correspondence Chess, 1958

-- White to play and mate in 2 --

Please send your answer (just the first move is sufficient) on a postcard or by email to the ECF Office, The Watch Oak, Chain Lane, Battle, East Sussex TN33 0YD (office@englishchess.org.uk).
The first correct entry drawn on 10th January 2013 will win a Batsford voucher for any book on their current list!



CHESS HOLIDAYS in the Lake District

A relaxed, informal 5-night holiday at this well-known Country House hotel, including a 7-round Swiss competition and tutorials on chess tactics. Suitable for the inexperienced as well as local club players

Rothay Manor, Ambleside

Tel: 015394 33605

E-mail: hotel@rothaymanor.co.uk

Website: www.rothaymanor.co.uk/chess

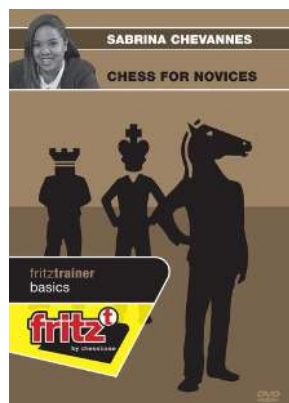


Book Reviews - Gary Lane

Chess for Novices Vol 1

Sabrina Chevannes (PC-DVD)

Produced by ChessBase Price £16.95



It is always difficult to know how to encourage children or adult beginners to take up the game. There are some good books on the market but the language is too difficult if you are aged nine and few adults want to be seen in public reading a title such as *Easy Peasy Chess for Children*. If you go back a

decade there was a flourishing trade in videos teaching one how to play but they have faded away so now English woman Sabrina Chevannes has managed to fill the void with an excellent primer for those keen to play chess. If you are new to these DVDs then you will be surprised that they last over 4 hours and of course can be watched, while on a train or plane so those with limited leisure time can still learn while on the move. It is also much easier to persuade kids to watch something on the computer, which is a friendly environment for them. The only drawback is that it assumes you have seen 'Chess for Beginners' which I think is unlikely although to be fair the first few chapters remind players of basics such as how to write the moves down and discusses that pieces are allocated points. Therefore, a little knowledge of the game will be enough to benefit immensely from the DVD. Sabrina sounds calm and professional which is quite a feat when you have to talk for hours and a chess board appears next to her image so you can see what is going on. She tackles openings that are likely amongst inexperienced players, tips on the middlegame, basics for the ending, lots of tactical ideas and finishes off with 30 test positions which as usual are talked through by the genial host. The ultimate test was to allow her potential audience to view it so I recruited Ryan aged 8 and Jasmine aged 6. They watched a few chapters and enjoyed it but Jasmine a fan of the pop star Katy Perry did wonder why Sabrina did not change her outfit to present every new chapter? You just can't please everyone!

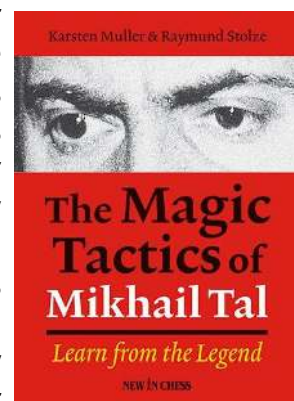
An ideal gift for anyone who wants to learn chess.

The Magic Tactics of Mikhail Tal

by Karsten Müller & Raymund Stölze

Published by New In Chess Price £21.95

The former World Champions always have a sense of aura about them and Tal was admired by all for his attacking skills. There have been plenty of books about this during his lifetime and just as many since his death in 1992. The latest addition goes for the angle that the tactics will teach players how to choose between correct and incorrect combinations according to the blurb on the book. The only snag is that the material is presented in rather a weird way. For example: on page 194 there is the game Tal-Dieter Keller and straight after the names are seven references to other books or magazines which is hardly reader friendly but the reason why soon becomes clear. Instead of merely borrowing analysis and then testing it with modern software they copy sentences from other sources. Therefore English international Peter Clarke's *Mikhail Tal's Best Games of Chess* published in 1973 is constantly quoted to assess positions but isn't this a case of cut and paste when the authors really should be writing their own book? This quoting from other sources is fine if it is a description of the actual game when it was played such as 'the door slammed and my opponent woke up' but just to 'borrow' lines is a bit odd.



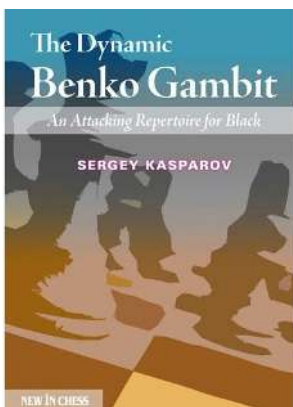
The plus points are that the analysis should be correct with all the latest technology available and if you are new to the games of Tal they will be a revelation.

The Dynamic Benko Gambit

Sergey Kasparov

Published by New in Chess Price £23.95

Garry Kasparov was born in Baku, Azerbaijan and so was Sergey. It must be difficult living in the shadow of arguably the greatest ever World Champion but despite not being related he is constantly asked the question. Sergey's own success of becoming a grandmaster has only been tracked by those of us who in the past have looked up Garry's games on Chessbase and then realised that searching for Kasparov brings forth somebody else. The good news is that Sergey has produced



a fine book that will motivate lots of players to take up the Benko and follow his suggested repertoire. The opening happens after 1 d4 Nf6 2 c4 c5 3 d5 and now 3...b5. The line has its critics at the highest level so I was surprised to see in the introduction a quote from Belgian grandmaster

Malakhatchko who comments "...I think the maximum for Black is a struggle for a draw. The opening is more suitable for rapid and blitz." Kasparov wisely responds with an argument that if you are rated 2700 it might not be perfect but even top players cannot prove flaws in gambits. I think the opening is more than suitable for a weekend tournament and there are plenty of top players around the world who still play it with great success. The layout of the book is excellent and I particularly like the addition of lots of small photos to illustrate players. I suspect after reading 316 pages any Benko Gambit player will win more games.

If you are an improving player then this is all you need to know about the Benko Gambit.

Do chess computers dream of electric pawns?

- by Stephen Jones, Strategic Planning (ECF), Founder of ChessCreator.com

In a landscape dominated by all powerful chess engines, with ever-increasing ELO ratings, one would imagine dedicated hardware chess computers to be something of an anachronism. The titanic men versus machine battles of the not too distant past, such as Kasparov versus Deep Blue, are slowly fading into legend. Today, even Deep Blue itself would be hard pushed to compete against many of these GM-crushing software-based chess engines.

Yet, despite an the inexorable rise to supremacy of software in pure ELO terms, hardware chess computers still retain more than just a cult following. Indeed, there is still a vibrant second-hand market, a number of active forums, and collector websites - where these supposedly obsolete chess computers are discussed, showcased and even revered - almost as 'classic cars'.

So, given most hardware chess computers would be crushed by their software counterparts Houdini, Stockfish, Rybka et al, what fuels this peculiar silicon obsession? I mean, if engines with a theoretical ELO of c.3,000 can be downloaded for free, why on earth do people part with cold, hard cash for an outdated 1989 Novag Solo (ELO 1400) - or even earlier, more primitive machines, some of which would be crushed by the humble Solo?

Vintage hardware chess computers are far from forgotten!



A picture from Ismenio Sousa's website: ChessComputers.org

Of course, chess computers - just like us humans - come in various shapes, sizes and playing strengths. This end, I've 4 hardware, silicon adversaries - 5 if I count my trusty Gameboy - and treat a game against one of my old chess computers, just as seriously - perhaps, even more seriously - as those against humans. Yes, I realise that chess engines are more powerful. Yes, I realise that most 'chess apps' could out-calculate my old machines. But, there's something tactile, something tangible about pressing actual buttons, moving physical pieces, etc.

A couple of self-contained silicon chess pals ...

Novag Solo (1989), c. ELO c.1,400 and below ...





For most of the chess enthusiasts into this aspect of the game, my opinion is they've seen the evolution of dedicated, hardware computers. In the past, before the likes of Deep Blue, chess was arguably seen as the ultimate battle of human-v-computer intelligence. These earlier dedicated chess computers enable us all, even today, to pit out wits against a silicon adversary - in a (not quite so deep as) Deep Blue challenge.

There is, I find, something deeply satisfying about beating a small calculator shaped box of circuits at our noble game. Of course, it's equally as distressing when one loses to a soulless, electronic 'chess abacus'! If these devious little boxes could laugh at me, I am sure they would. One day, I might even beat my Novag Sapphire - though, with an estimated strength in excess of ELO 2,000, I fear that day is some time away!

... Novag Sapphire (1994), ELO c. 2,100

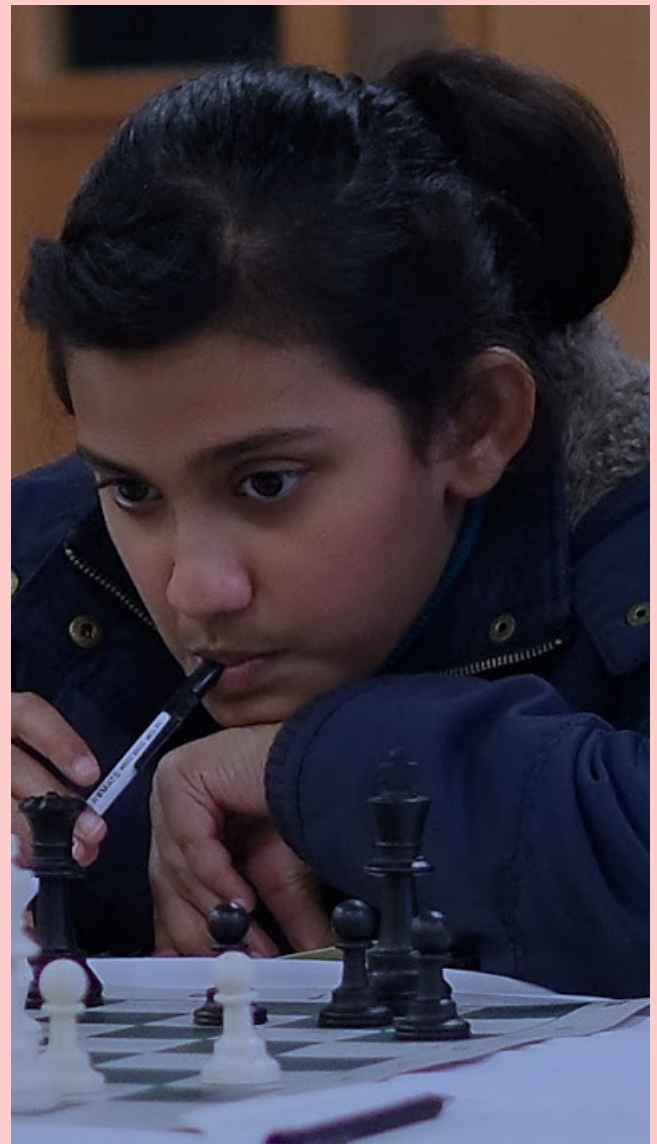
John Upham - Chess Images

See John's work at - <http://johnupham.smugmug.com/Chess>
Elizabeth Paehtz (Cheddleton)
at the 4NCL Final Weekend



Brendan O'Gorman - Chess Images

See Brendan's work at - <https://picasaweb.google.com/bpogorman>
A study in concentration from Torquay 2012
Nandaja Narayanan



Tournament Calendar

LEGEND -

#	British Championships qualifying tournament
@	FIDE rated
*	ECF Grand Prix
~	ECF graded event
U	Ungraded event

All congresses graded by the ECF are part of the official Grand Prix. For a more comprehensive calendar updated constantly, visit the ECF website - www.englishchess.org.uk

21 Nov CCF Daytime FIDE Club - Autumn Event Round 4

84-90 Chipstead Valley Road, Coulsdon, Surrey CR5 3BA Contact: Scott Freeman Email: chess@ccf-world.com Tel: 020 8645 0302 Website: <http://www.ccfworld.com/Chess/>

~@ 24 Nov London FIDE Rapid Play

Newman Catholic College, Harlesden Road, Willesden NW10 3RN Contact: Sainbayar Tserendorj Email: londonrapidplay@yahoo.co.uk - sections U1700, U2000 and Open Website: www.londonrapidplay.co.uk

~@ 24 Nov London Junior FIDE Rapid Play

Newman Catholic College, Harlesden Road, Willesden NW10 3RN Contact: Sainbayar Tserendorj Email: londonrapidplay@yahoo.co.uk - sections U8, U10, U12, U14 and U18 Website: www.londonrapidplay.co.uk

24 Nov Champions' League Chess - Kent Zonal

84-90 Chipstead Valley Road, Coulsdon, Surrey CR5 3BA Contact: Scott Freeman Email: chess@ccf-world.com Tel: 020 8645 0302 Website: <http://www.ccfworld.com/Chess/>

~* 24-25 Nov BUCA Individual Championship

De Vere Wychwood Park, nr Crewe Contact: Alex Holowczak Email: admin@buca.org.uk Website: <http://www.buca.org.uk>

~@ 24-25 Nov 4NCL Rounds 1 and 2 (Division 3 North)

De Vere Wychwood Park, nr Crewe Contact: Mike Truran Tel: 01993 708645 Contact address: The Old Farmhouse, 7 Church Street, Ducklington, Witney OX29 7UA

24-25 Nov British Rapidplay Chess Championships

Leeds Metropolitan University (TBC) Contact: Brent Kitson Email: applebr.kitson@sky.com

~*#24-25 Nov Hampstead FIDE Chess Congress

Henderson Court Resource Centre, 102 Fitzjohns Avenue, London, NW3 6NS Contact: Adam Raoof Email: adamraoof@gmail.com - five rounds, games are FIDE rated and graded by the ECF for the national grading database. Maximum 40 players, limited to players rated Under 2200. Unrated players should be Under 190 ECF, or the national equivalent. Swiss format tournaments. PRIZES - 1st £200, 2nd £100. There will be two rating prizes of £50.00 for players Under 1900/150 and Under 1600/120

25 Nov Champions' League Chess - Surrey West Zonal

84-90 Chipstead Valley Road, Coulsdon, Surrey CR5 3BA Contact: Scott Freeman Email: chess@ccf-world.com Tel: 020 8645 0302 Website: <http://www.ccfworld.com/Chess/>

~ 25 Nov 2012 Wiltshire Team Rapidplay Tournament

Nationwide HQ, Pipers Way, Swindon, Wiltshire Contact: Tony Ransom Email: chesssalsa@aol.com - the format of the tournament will be as follows: teams of 3 players (you may choose to have a squad of more players and swap people in and out of different rounds), 30 minutes per player per game, entry fee £12 per team (cash only)

~ 25 Nov Woodbridge Junior Chess Open

Woodbridge School, Burkitt Road, Woodbridge IP12 4JH Contact: Adam Hunt Email: ahunt@woodbridge.suffolk.sch.uk Website: www.woodbridgechess.com - junior chess open, with a strong open section for adults. The event will be ECF rapidplay graded

~*@ 25 Nov 104th Richmond Rapidplay

The White House Community Association, The Avenue, Hampton TW12 3RN Contact: Sabrina Chevannes Email: sabrinachevannes@hotmail.co.uk Website: www.chevanneschessacademy.com

~ 25 Nov 2nd Shenley Junior Chess Congress

Manor Lodge School, Rectory Lane, Ridge Hill, Shenley, Herts. WD7 9BG Contact: Tony Niccoli Email: tony1n@yahoo.com - London Junior Chess Championship Qualifier, Under 12, Under 10 and Under 8 Sections. 6 rounds, 30 mins each.

25 Nov All Middlesex Girls Chess Championships 2012

Isleworth & Syon School, Ridgeway Road, Isleworth, Middx. TW7 5LJ Contact: Amu Sainbayar Email: amu.s.01@hotmail.co.uk Website: www.ukchessacademy.com - sections U7, U8, U9, U10, U11, U12, U14, U18 plus Adult Intellectual. Trophies will be awarded to overall champions, plus T-shirts for those scoring 11 points or more. Scoring will be 3 for a win, 2 points for a draw and 1 point for a loss.

1 Dec Birmingham and District Junior League U18 Invitation Rapid Play

King Edwards School, Birmingham Contact: Richard Simpson Email: rick@lagonda.org.uk

1 Dec Champions' League Chess - Croydon Borough Zonal

84-90 Chipstead Valley Road, Coulsdon, Surrey CR5 3BA Contact: Scott Freeman Email: chess@ccf-world.com Tel: 020 8645 0302 Website: <http://www.ccfworld.com/Chess/>

~@ 1-9 Dec London Chess Classic

Olympia Conference Centre, Kensington, London, W14 8UX Contact: Sean Hewitt Email: festival@londonchessclassic.com Tel: 07883 495758 Website: www.londonchessclassic.com/ | Featuring 9 round FIDE Open, Weekender A, Weekender B (FIDE Rated), Rapidplay A (FIDE Rated), Rapidplay B (FIDE Rated), Blitz (FIDE Rated), Women's Invitational

~@ 1-10 Dec 4th London Chess Classic

Olympia Conference Centre, Kensington W14 8UX Contact: Chess & Bridge Tel: 020 7486 7015 Email: info@londonchessclassic.com Website: <http://www.londonchessclassic.com> - once again the strongest tournament ever held in the UK! Magnus Carlsen, Vishy Anand, Levon Aronian, Vladimir Kramnik, Hikaru Nakamura, Judit Polgar, Michael Adams, Luke McShane and Gawain Jones in a 9-player all-play-all

2 Dec Barnet Junior Chess Grandmaster Training Day

St Pauls C of E School, The Ridgeway, Mill Hill, London NW7 1QU Contact: Angela Eyton/Tony Niccoli Email: teams@barnetjuniorchess.com Website: www.barnetjuniorchess.com - with special guest coach Grandmaster Nick Pert. Coaching will take place in small similar ability groups with breaks between lessons. Fully supervised. Prizes for effort.

2 Dec Champions' League Chess - Middlesex Zonal

84-90 Chipstead Valley Road, Coulsdon, Surrey CR5 3BA Contact: Scott Freeman Email: chess@ccf-world.com Tel: 020 8645 0302 Website: <http://www.ccfworld.com/Chess/>

***~ 2 Dec Bury (Greater Manchester) Rapidplay**

Elton Vale Sports Club, Elton Vale Road, Bury, Lancs. BL8 2RZ Contact: Anthony Lee Email: antho-nymlee@btinternet.com - Six round Rapidplay, ECF Grand Prix and MCF Grand Prix, refreshments and food available. Three sections: Open, Major & Minor

~ 7 Dec Supremi Team Championships Final

Olympia Conference Centre, Kensington W14 8UX Contact: T.Sainbayar and M.Basman Email: ukchessacademy@gmail.com Website: www.ukchessacademy.com - all Supremi 2012 and joint winners of section of Mega finals of the Delancey UK Schools Chess Challenge can play in this tournament. Sections: All entrants will be divided into sections of up to 32 players, according to grade. 5 round Swiss, 15 minutes each player, ECF Graded. Prizes: In each section guaranteed money prize Winner £50, Runner-up £25, Top Girl £20, Grading £20

~ 8 Dec 7th West London Junior Rapid Championship (U12)

Committee Room, Chiswick Town Hall, Heathfield Terrace, Chiswick, London W4 Contact: Meri Grigoryan Email: wljcc2001@gmail.com Website: <http://www.westlondonchess.com/juniors> - Rounds: 5 Nobody is knocked out. Clocks to be used on all boards: 10 min each on the clock, 20 min for a game

~ 8 Dec 3rd English Junior Rapidplay

Olympia Conference Centre, Kensington W14 8UX Contact: Sainbayar Tserendorj Email: info@londonchessclassic.com - £15 per player, late entry fee £5 applies after 23/11/12 | Enter online |

~ 9 Dec 9th South Hams Rapidplay

The Regal Club, Church Street, Kingsbridge, Devon TQ7 2LX Contact: Ben Wilkinson Email: brwilkinson@me.com - a small local tournament played in a relaxed, friendly but competitive atmosphere. Numbers limited to 30. 6 round Swiss tournament with one section, but with several grading prizes. Venue has a fully licensed bar, parking and shops close by. Entry form still under construction, but please email me in the first instance, and I will send out forms as soon as they are ready.

12 Dec CCF Daytime FIDE Club - Autumn Event Round 5

84-90 Chipstead Valley Road, Coulsdon, Surrey CR5 3BA Contact: Scott Freeman Email: chess@ccf-world.com Tel: 020 8645 0302 Website: <http://www.ccfworld.com/Chess/>

~ 15 Dec Docklands (Poplar) Rapid-Play

Langley Hall, St.Nicholas' Church Centre, Ettrick Street, Poplar, London E14 0QD Contact: Norman Went Email: DocklandsChess@yahoo.co.uk Website: www.spanglefish.com/docklandschessclub - 6 round Swiss Rapidplay tournament, below 205 rating only

~* 15 Dec Harrow Under 12

University of Westminster, Harrow Campus Contact: Marc Shaw Email: 2012@ljcc.co.uk Website: www.ljcc.co.uk - qualifying event for LJCC Under 12 Championships held 28-30 December

~ 15 Dec National Prep Schools Rapidplay

Aldro School, Lombard St, Shackleford, Godalming, Surrey GU8 6AS Contact: David Archer Email: archerd@aldro.org - a 5 round swiss tournament with sections for U13, U12, U11, U10 and U9 age groups. Team and individual prizes available with cup to the winning school and shields to the 2nd and 3rd placed schools. Individual prizes in each age group

~* 15-16 Dec London Junior Chess Championships

University of Westminster, Harrow Campus, Northwick Park, Harrow HA1 3TP Contact: Marc Shaw Email: 2012@ljcc.co.uk Website: www.ljcc.co.uk - Under 10 and Under 14 Major Championship and Minor events. Qualification required for Under 10 events

~* 15-16 Dec Rochester Mid Winter Chess Congress

Warren Wood Social Club, 99b Warren Wood Road, Rochester, Kent ME1 2XA Contact: Tyrone Jefferies Email: tyronejefferies@hotmail.com - Open including U180, Major U160 including U140, Minor U120 including U100 week-end chess tournament of 5 rounds in each section

~* 15-16 Dec 6th Northwick Park Chess Congress

University of Westminster, Harrow Campus Contact: Marc Shaw Email: 2012@ljcc.co.uk Website: www.ljcc.co.uk - Open, Major U165 and Minor U125 sections

~ 16 Dec Sheffield Junior Congress

Birkdale School, Oakholme Road, Sheffield S10 3DH Contact: John Hipshon Email: jr.hipshon@ntl-world.com Website: www.leedsjuniorchess.org.uk - Major, Intermediate, Minor, Novice sections

22-23 Dec Christmas Long Play Congress (including FIDE Rated Open)

84-90 Chipstead Valley Road, Coulsdon, Surrey CR5 3BA Contact: Scott Freeman Email: chess@ccf-world.com Tel: 020 8645 0302 Website: <http://www.ccfworld.com/Chess/>

28-30 Dec London Christmas Chess Congress

University of Westminster, Harrow Campus Contact: Bill Egan Email: wjegan21@aol.com - Open, U165 and U125 sections

~ 28 Dec - 6 Jan 88th Hastings International Chess Congress

Horntye Park Sports Complex, Bohemia Road, Hastings, East Sussex TN34 1EX Contact: Con Power Email: conpowr@aol.com | Website: www.hastingschess.com

***@# 28 Dec London Junior Chess Championships**

University of Westminster, Harrow Campus, Northwick Park, Harrow HA1 3TP Contact: Marc Shaw Email: 2012@ljcc.co.uk Website: www.ljcc.co.uk - Under 8, Under 12, FIDE Rated Under 16 and FIDE Rated Under 18/21. Qualification required for Under 8 and Under 12

***~@# 28-30 Dec London Christmas Chess Congress**

University of Westminster, Harrow Campus Contact: Marc Shaw Email: 2012@ljcc.co.uk Website: www.ljcc.co.uk - FIDE rated Open, Major Under 165, Minor Under 125

2013

~*@ 4- 6 Jan Hastings Weekend Congress

Horntye Park Sports Complex, Bohemia Road, Hastings, East Sussex TN34 1EX Contact: Con Power
Email: conpowr@aol.com | Website: www.hastingschess.com

~* 4-6 Jan Fulprint 26th York Chess Congress

Energise, Cornland Road, Acomb, York YO24 3DX Contact: Richard Hardy Tel: 01904 764963 / 07766 063865 - open, major, intermediate, minor sections

4-6 Jan South Wales Winter Congress

Heronston Hotel, Ewenny Rd., Bridgend CF35 5AW Contact: Kevin Staveley Email: kevin.staveley@btinternet.com - 5 round swiss with three sections

~*@ 5 Jan Golders Green FIDE Rapidplay Congress

Golders Green Parish Church Hall, West Heath Drive, London NW11 7QG Contact: Adam Raoof Email: adamraoof@gmail.com Website: <http://www.goldersgreenchess.blogspot.com>

***~ 5-6 Jan Shropshire Chess Congress**

Wrekin Housing Trust, Colliers Way, Old Park, Telford TF3 4AW Contact: Steve Rooney Email: steve.rooney@busandcoach.com Website: www.shropshirechess.org - a friendly tournament in superb surroundings with good playing conditions and catering to make your mouth water. Open, Major U160 and Minor U120 sections. Entry forms available soon!

~* 5-6 Jan Castle Chess : 1st Winchester Congress

Holiday Inn , Telegraph Way, Winchester SO21 1HZ Contact: Tony Corfe Email: tony@tcs-chess.demon.co.uk Website: www.castlechess.co.uk - three sections: OPEN (including Premier U180), MAJOR (U160) including Intermediate U140, MINOR (U120) including CHALLENGERS U100

~ 6 Jan 4th Chess Coaching Services Tournament and Training Day

John Keble Church Hall, Church Close, Edgware, Middlesex HA8 9NS Contact: Rob Willmoth Email: robwillmoth@hotmail.co.uk - coaching by International master Lorin D'Costa and British master Rob Willmoth plus other recognised coaches. The only event of its kind in the UK

~* 6 Jan Sussex Junior Hastings Rapidplay

St. Mary Star of The Sea School, Magdalen Road, St. Leonards-on-Sea, East Sussex TN37 6EU Contact: Paula Payne Email: entrymanager@sussexjuniorchess.org Website: www.sussexjuniorchess.org - 6 rounds rapidplay in 4 sections; U11 Minor and Major, U18 Minor and Major. Open to all aged under 18 on 31st August 2012

9 Jan CCF Daytime FIDE Club - Spring Event Round 1

84-90 Chipstead Valley Road, Coulsdon, Surrey CR5 3BA Contact: Scott Freeman Email: chess@ccf-world.com Tel: 020 8645 0302 Website: <http://www.ccfworld.com/Chess/>

~@ 12-13 Jan 4NCL Rounds 3 and 4 (Divisions 1 and 2)

De Vere Venues, Staverton Park Contact: Mike Truran Tel: 01993 708645 Contact address: The Old Farmhouse, 7 Church Street, Ducklington, Witney OX29 7UA

~@ 12-13 Jan 4NCL Rounds 3 and 4 (Division 3 South)

Barcelo Hotel, Daventry Contact: Mike Truran Tel: 01993 708645 Contact address: The Old Farmhouse, 7 Church Street, Ducklington, Witney OX29 7UA

~@ 12-13 Jan 4NCL Rounds 3 and 4 (Division 3 North)

Barcelo Redworth Hall Contact: Mike Truran Tel: 01993 708645 Contact address: The Old Farmhouse, 7 Church Street, Ducklington, Witney OX29 7UA