

## *Magnificent Bequest to the British Chess Federation*



John Robinson the well known and much esteemed chess organiser and arbiter died on 1st February 2006. John dedicated much of his life to chess in many forms, now comes the news of a magnificent bequest to the British Chess Federation of the order of £650,000. Of this sum about £120,000 will be invested in the British Chess Federation Permanent Invested Fund enabling John's expressed wish of support for the British Championship to be carried out, the remainder of the bequest will be invested in the John Robinson Youth Chess Trust a Charitable Trust which means no inheritance tax is payable on John's bequest. It is proposed that this money should be invested in such a way that the capital may be retained and the accumulated income used for grants from the Trust.

This Legacy provides stability for the future of the Championship and for Junior Chess.

*If anyone wishes to consider a bequest to ECF/BCF please contact the Office for further details.*

# Editorial

The establishment of the National Chess Library is progressing well. The rooms have now been cleared and the specialised shelving is in place. The books are in the process of being unpacked with book plates being added. As soon as an opening date is fixed this will be announced. There are many other exciting projects, other than books being discussed with Hastings University, it is amazing how one venture can lead to others.

John Robinson whose wonderful legacy to ECF has already been reported on, also left a small collection of chess books which will now form part of the Library. This year the ECF office took on the processing of the entries for the British Championships at Swansea (another gap that John left) this is going well, we are also taking in the entries for the 1st Bromsgrove Chess Festival incorporating ECF Young Masters, details available from the office and the website. Why not enter this prestigious event.

Cynthia Gurney, Editor

## ECF BATSFORD COMPETITION

**Congratulations to the May/June Winner**

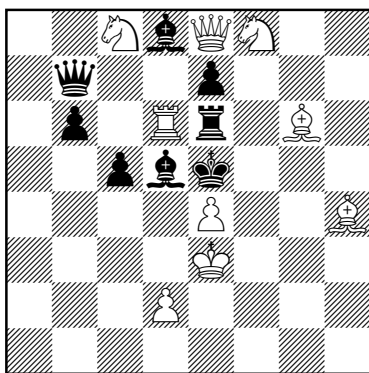
**Joe Franks from Ruislip**

**The Correct Answers are: 1.Ne4**

Barry P Barnes

6th HM., Die Schwalbe, 1957

**White to play and mate in 2**



Please send your answer (just the first move is sufficient) on a postcard to the

**ECF Office, The Watch Oak,  
Chain Lane, Battle, East Sussex TN33 0YD**

The first correct entry drawn on 10th September 2006 will win a Batsford voucher for any book on their current list.

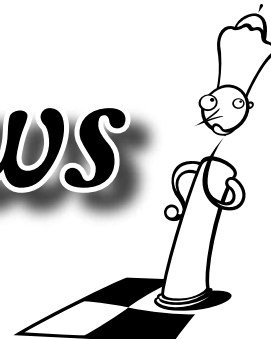
B T BATSFORD

## Contents

Magnificent Bequest .....	FC
ECF News .....	2 - 3
International News .....	4
Junior News .....	5 - 7
County Champs & National Club .....	5
Littlewood's Choice .....	9
Book Reviews & Results Round-Up .....	10 - 11
Grand Prix & Calendar .....	12

**Copy Deadline 10th September 2006**

# ECF News



## Nominations for Election at the ECF AGM

**The voluntary posts to be elected at the AGM on 21 October 2006 are:**

President, Chief Executive, Director of Finance, A minimum of 2 Non-Executive Directors, Up to 4 Executive Directors

The FIDE delegate

The Chairman of the Finance Committee

Members of the Finance Committee

The Chairman of the Governance Committee

Members of the Governance Committee

**Each candidate for a Post must be either:**

(a) A retiring Director, FIDE Delegate or Chairman of a Standing Committee seeking re-election to the same Post; or

(b) A nominee of the Board for a Post; or

(c) A person proposed by any of the following **full** members:

- (i) any Director;
- (ii) the FIDE Delegate;
- (iii) the Chairman of a Standing Committee;
- (iv) any two Trustees;
- (v) any Representative Member of a Constituent unit;
- (vi) any two Representative Members of Counties;
- (vii) any two Direct Members' Representatives;
- (viii) any two of a Trustee, a Representative Member of a County and a Direct Members' Representative; or
- (ix) any five Individual (not Direct) Members or Representative Members.

Brief job descriptions for these posts will be shown on the website [www.englishchess.org.uk](http://www.englishchess.org.uk) in downloadable form and available in hard copy form from the office from 25 July 2006. Job descriptions will be subject to review by the Board on 5 August 2006. Any proposed changes, together with a note of which incumbents will be seeking re-election, will be shown on the website in downloadable form from 14 August 2006, available in hard copy form from the office from that same date and will be sent to each earlier enquirer automatically.

To be eligible for election, nominations with the required level of support, must be received at the ECF Office, The Watch Oak, Chain Lane, Battle, East Sussex TN33

0YD no later than 13.30 on Wednesday 13 September 2006.

Managers and other officers are appointed by the Board and by individual Directors and are not subject to election by Council. However, this is an appropriate time for anyone interested in this type of work to indicate their interest to the Board through the ECF office.

## Proposals to the AGM

It is open to **full** members as specified in (c) (i - ix) above to submit proposals to the AGM of ECF.

It is recommended that proposers should consult the Chairman of the Governance Committee to ensure that their proposed papers are in an appropriate format and are sound from a constitutional point of view. John Dunleavy may be contacted by e-mail at [vijaydee@britishlibrary.net](mailto:vijaydee@britishlibrary.net) or by telephone at reasonable hours on 01548 857623.

For inclusion in the agenda for the AGM final papers must be received at the ECF Office, as above by 13.30 on Wednesday 13 September 2006.

## Election of Direct Members' Representatives

For the purpose of electing the Direct Members' Representatives, Direct Members of ECF are grouped into the following four categories:

- (a) Honorary Life Vice Presidents, Vice Presidents, Corporate Vice Presidents, Honorary Life Members and Life Members;
- (b) Full Direct Members, Family Members, Veteran Members, Student Members, Special Members and Members with Disabilities;
- (c) Standard Members and Junior Members;
- (d) Basic Members and Basic Junior Members.

Each of these four categories may elect two Direct Members' Representatives. There are currently two vacancies in

each of categories (a) and (d). The Representative Members for category (b), Messrs. William Armstrong and Peter B. Wilson have both indicated that they seek re-election. The Representative Members for category (c), John L Paines and Robert Gurney have both indicated that they seek re-election.

Nominations for representatives for all four categories are invited. Nominees must be members of the category concerned and must be nominated by one member of that same category. To be eligible for election, nominations must be received at the ECF Office, as above, by 13.30 on Thursday, 31 August 2006.

Should there be more than two nominations in any category a postal election will be conducted in September. All appointments made will be effective from the end of Council 21 October 2006.

## Player of the Year 2006

The English Chess Federation is delighted to announce the winner of the 2006 Player of the Year award. This goes to England's Jovanka Houska. This is unprecedented as Jovanka is the first female to receive this prestigious recognition. This historic occasion will be celebrated by the prize giving ceremony and handover of the award by ECF President Gerry Walsh. Jovanka has enjoyed a thrilling career so far and the last 12 months have witnessed a serious challenge for the Women's World Chess Championship in 2006 amongst numerous impressive performances.



Jovanka, despite the East European sounding name, was born in South London. She is one of the few English chess professionals around these days and proudly boasts a WGM (International Woman's Grand Master title), is qualified at male International Master level and has aspirations to become England's first proper female Grandmaster.

Jovanka says: 'My first achievement that I was really proud of was representing England in the World girl's Championship under 10. I was also European Under 20 Girl's Champion in 2000, which I think is probably my greatest achievement.' Jovanka also adds: 'This year I participated in the European Individual Championship for Women in Moldova. I finished in the top ten and earned the right to play in the World Championships.'

Gerry Walsh, President of the English Chess Federation commented: 'I am absolutely delighted for Jovanka. She has performed brilliantly this year and has always been a popular and enthusiastic personality on the circuit.'

## British Girls Chess Champion Releases Single

Francesca Berlin was joint winner of U12 British Girls Chess Championship in 2000. She has since developed her talents as a singer/songwriter and performs her own songs and cover versions of tracks by Eva Cassidy in venues around London. Francesca Berlin's debut single 'Colours Faded' will be released on 7 August and is expected to get into the top 40 but she needs all possible help to make this happen. Visit her website at [www.francescaBerlin.co.uk](http://www.francescaBerlin.co.uk).


## Civil Service Chess Association v Insurance Chess Club

*Report by David G Mills*

The eighth annual fixture between the Civil Service Chess Association and the Insurance Chess Club was held at the Elmbank Hotel, The Mount, York. Situated just fifteen minutes walk from the railway station and within easy reach of the city centre, it has hosted a variety of chess matches, congresses and coaching sessions in recent years. Large murals, frescoes and a spacious oak staircase offer visitors a relaxing country house atmosphere. Respective team captains, David Mills and Geoff Naldrett agreed upon a two round ten board contest over the weekend of 6th and 7th May 2006.

Despite my efforts to include players from across the country, the Civil Service team comprised representatives from Yorkshire and Lancashire while our opponents were largely drawn from South East England with guests from York and District Chess Association. Both captains select players from a wide range of abilities and attempt to field teams of similar strength. On exchanging team sheets there was virtually nothing to choose between the respective sides, suggesting a closely fought match, however the first round scores surprised everyone present.

Playing at the rate of 36 moves in 1½ hours plus 30 minutes allegro finish, the Civil Service team amassed a staggering 8½ - 1½ lead on the Saturday - virtually guaranteeing victory overall. This arose as a consequence of a mixture of good play and good luck, however your scribe really enjoyed the evening meal! The Insurance Chess Club offered sterner resistance on the Sunday despite putting out a slightly weaker team, yet went down 6 - 4 in round two and 14½ - 5½ overall.



**2006**  
British  
Chess  
Magazine  
Catalogue  
now available

[www.bcmchess.co.uk](http://www.bcmchess.co.uk)



## Olympiad 2006

### - A Good Performance For England

by Susan McFarland



The England Women's Team, consisting of IM Jovanka Houska, WFM Jessie Gilbert, WGM Jana Bellin and WFM Sophie Tidman, made a steady start in the Women's Olympiad held in Turin, Italy (20th May to 5th June). Their 3-0 first-round victory against Botswana was followed by a battle against the 6th seed, China, which China won 3-0. A win against Brazil led to tough opposition in the shape of 12th seed Poland. Out-rated on all boards, only Jovanka on Board one secured a win, against IM Iweta Radziewicz (2439). England bounced back with victory over Iran seeded only two places below them.

Fortune smiled less kindly on the team over the bank holiday weekend. After a defeat to Venezuela, the team was up-floated to play Moldova in round seven. Jovanka drew with fellow IM Svetlana Petrenko, while Jessie and Jana drew with WGMs Karolina Smokina and Elena Partac respectively. This very respectable result led to yet another up-float, this time against the Czech Republic which sadly, the team lost despite a good win for Jovanka on Board one. A draw with Austria in round nine, and a loss to Azerbaijan left the players looking forward to the second rest day.

England rallied in the last three rounds, starting with a convincing victory against the Dominican Republic, Jovanka, Jessie and Sophie winning 3-0. In the pairing against Switzerland, seeded two places higher, Jovanka and Sophie drew, but Jessie Gilbert was not successful against WIM Monika Seps, and the match was lost. In the final round, England faced Finland, and wins from Jessie and Jana secured the victory – a good finish in the Women's Olympiad.

Finishing in 42nd place, just half a point would have brought the team back to its original 35th seeding, a very respectable performance. This was the first time Jovanka led the team in an Olympiad, and both Jessie and Sophie made their

Olympiad debuts. Jana returned to the team after some years during which the event has grown much larger and the time control has changed to the much faster 90 minutes for all moves, with 30 second increments. Thus, for all four players this was a new and challenging experience. Sophie merits special mention as she performed above her rating.

The Women's Olympiad was contested by 108 Women's Teams of up to four players, only six of which fielded the minimum three boards, including Fiji and Rwanda. This largest of the Olympiads so far was played in the enormous Palasport Oval built for the 2006 Winter Olympics, in Turin, which is both a modern, commercial centre and an historic city. Many players were able to enjoy the rest days visiting its numerous attractions.

Ukraine won gold for the first time, one and a half points above the first seed, Russia, which had dominated much of the event. The silver medallists were just half a point higher than China, who captured bronze. All three medallists were significantly ahead of the field. China finished four points above fourth-placed Armenia, which tied with Hungary, Georgia and the Netherlands.

One player reached a performance over 2600 and two just below it. WGM Xue Zhao of China performed at 2617 over all 13 games. IM Tatiana Kosintseva of Russia had a performance of 2598, while twelve-year-old WFM Yifan Hou of China achieved an outstanding performance of 2596, some 300 points above her rating of 2298. Two such performances from China in a team without its former Women's World Champions, Xie Jun, Xu Yuhua or Zhu Chen (who plays for the Qatar men's team), augurs extremely well for the continuing strength of Chinese women players.



# Junior News

## National Schools Championship 2005-6

The competition is complete. The eight semi-final qualifiers met at Uppingham School 6th and 7th July 2006 to decide the Plate and Championship winners. It was a delightful venue. Cyril Johnson, ECF Junior Director, attended. David Welch, as ever, was Chief Arbiter.

**Nottingham HS A** are Champions, retaining their title. **Monmouth School** take the Plate Championship.

*There is an age handicap. The older team, to win, must finish ahead by a number of points at least equal to the age difference in years (taken as an integer by truncation, and with a maximum value of 4). Teams winning on age handicap (or on board count if there is no handicap) are marked by an asterisk. Failing an asterisk, the team with more points is the winner.*

### CHAMPIONSHIP

**Round 1** (by 10th March) Lancaster RGS (15.11) 5 1 QEGS Wakefield Junior School (10.10); Norwich School (16.0) 3½ 2½ \*Nottingham High School B (13.2); Tiffin School (16.8) 2 4 Dulwich College (14.3). *Byes* Kings House Richmond; Methodist College Belfast; Millfield School; Nottingham High School A; Southend High School

**Quarter-Finals** (by end of spring term) Lancaster RGS (16.0)\* 3 3 Methodist College (16.5); Nottingham HS A (16.6) 5½ ½ Nottingham HS B (13.3); Millfield School (15.3) 5½ ½ Kings House (9.7); Dulwich College (14.5) 3½ 2½ Southend HS (16.7)

**Semi-Finals** Millfield School (15.7) 1½ 4½ Dulwich College (13.7); Lancaster RGS (16.3) 1 5 Nottingham HS A (16.10)

**Third place Play-off** Millfield School (15.7) 4 2 Lancaster RGS (16.3)

**Final Nottingham HS A (16.10) 5 1 Dulwich College (13.7)**

### PLATE CHAMPIONSHIP

**Round 1** Bolton School Junior School (10.3) 1 5 Yarm School (15.4); Spalding GS scr w/o S Anselms Bakewell; St Stephens Twickenham (10.8) 0 6 Haberdashers B (13.1). *Byes* Colchester RGS; Haberdashers A; Monmouth School; RGS Guildford; Sullivan Upper School

**Quarter-Finals** Yarm School w/o scr Sullivan Upper School; S Anselms (12.0) 1 5 Monmouth School (14.1); Haberdashers B (13.10) 2 4 Haberdashers A (14.9); Colchester RGS (16.0) ½ 5½ RGS Guildford

(14.7)

### Semi-Finals

Haberdashers A (15.0) 5 1 Yarm 16.1); Monmouth School\* (14.7) 3 3 RGS Guildford (14.5)

### Third place Play-off

RGS Guildford (14.5) 4½ 1½ Yarm School (16.2)

**Final Haberdashers (15.0) 3 3 \*Monmouth School (15.0)**

*Monmouth School Team*



## County Championships 2005/6

The County Championships were again held at Radcliffe College on 1st July. The attractions of the TV showing the England match in the refreshment area proved too much for some and there were a number of short draws. The Open Championship was an all-SCCU affair between perennial finalists Essex and Kent (Essex being the underdogs on grading). The match was closely contested all-day and it was only with the last game that Essex emerged triumphant 8½-7½.

The Minor Counties Championship saw Norfolk make a hat trick of wins by defeating Surrey (9 - 7) also in a closely contested match. In the U175, Devon were the defending champions. They had the misfortune that two players didn't turn-up and were outgraded. Nevertheless, the scale of Sussex's victory (12½ to 3½) was unexpected.

The U150s saw Yorkshire comfortably defeat Cambridgeshire 10-6. While the U125 saw another close finish with Bedfordshire edging out Warwickshire 8½-7½. Finally, the U100 also saw a close finish in which Kent narrowly edged out Norfolk 6½-5½.

The prizes were presented by Roy Heppinstall, the ECF CEO with assistance from Cyril Johnson and Chris Majer. Thanks were expressed to Julie Johnston who took over the running of the event at short notice, to Cyril and Julie Johnson who did the catering and to the controlling team, Messrs Shaw, Elwin Hewitt and Johnston.



14 of the winning Essex team plus officials.

*Photograph taken by Muriel Heppinstall.*

Detailed match results can be found at [www.englishchess.org.uk/events/bcfnatteam/county2006](http://www.englishchess.org.uk/events/bcfnatteam/county2006).

## National Club Championships 2005/6

**Open Final** Wood Green 5 - 1 Maidstone

**Major U160 Final** Bedford 3½ - 1½ Bourne End

**Plate Final** Milton Keynes 3 - 2 Maidstone

**Minor U125 Final** Maidstone 2½ - 1½ Lancaster

**Plate Final** Ashfield 2½ - 1½ Westcliff

*Ashfield v Westcliff*





# National Girls' Team Championships 2006

**This prestigious team tournament was open to all female chess players, up to the age of 18.**

County sides, school teams or just groups of chess-friends were all welcome. Over 200 competitors from all across the UK played. This festival of chess was held on the 10th June 2006, in the historic grounds of Claremont Fan Court School.



It was a fantastic day out for all the family. The amazing weather allowed everyone to take advantage of the 97 acres of parkland, picnic facilities and tours of the Claremont Mansion.



*The Lady Killers, winners of the Under 14 Section*



*Some of the competitors on the steps of the Claremont Mansion*



*Some of the younger players enjoying the day's play*

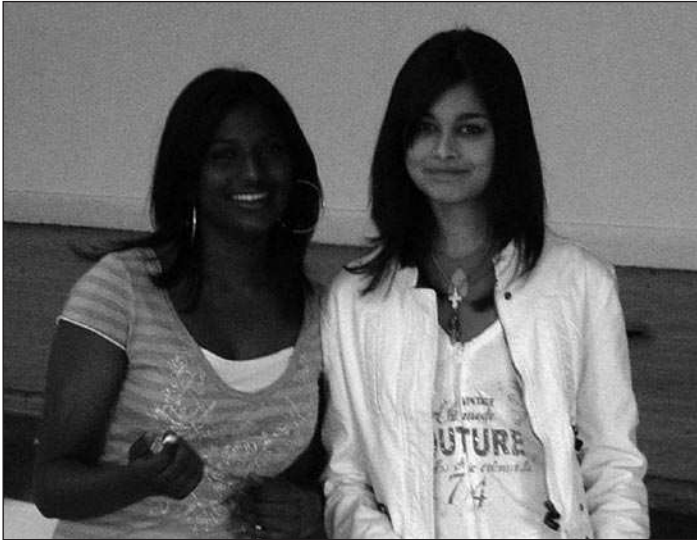
## The 2006 trophy winners are:

Section	Section Winners	Best School Team
<b>Under 18</b>	Thamesdown U18 Nicola Thomas Sarah Thomas Marjay Alojado Samantha Musgrave	Lady Eleanor Holles u18 Selina Khoo Jessica Thilaganathan Antonia Round Vaishnavi Khatau
<b>Under 14</b>	The Lady Killers Thilagini Anadajeyarajah Lateefah Messam- Sparks Fay Birch Radha Jain	Sir William Perkins u14a Catriona Meechan  Natalie Hudson Jennifer Shelley Catherin Penfold
<b>Under 11</b>	Putney Knights Flavia Edelsten Helen Fishwick Georgina Howat Charlotte Wootton	Putney Knights Flavia Edelsten Helen Fishwick Georgina Howat Charlotte Wootton
<b>Under 9</b>	Cowley Chess Club u9 Sarah Garrett Anna Wang Rowan White Chantelle Foster	Oxford High School Irene Mathias Katherine Klemperer Tiyash Banerjee Amber Tse
<b>Relax with chess</b>	Harvey Birch	



# All England Girls' Gold Finals 2006

The All England Girls' Gold Finals continue to go from strength to strength, with about 100 pre-qualified competitors fighting it out for national girls' titles. The tournament was a huge success with girls, parents and organisers all working together to ensure a great day was had by all.



*Sheila and Thilagini*



## **Under 18**

1st= Thilagini Anandajeyarajah, Sheila Dines 4.5/5

**Under 14** 1st Kiruthika Rajeswaran 4.5/5

**Under 12** 1st Danae Kokossis 4.5/5

**Under 10** 1st Radha Jain 4.5/5

**Under 8** 1st Rowan White 5/5

## **County Awards**

A trophy was presented to the best player from each county.

## **Best game prizes**

All girls were invited to write their moves down and enter as many games as they wanted for the best game prizes, which were judged by Heather Lang.

The 10 book prizes went to:

Megan Cleeves; Sheila Dines; Sarah Garrett; Radha Jain; Alicia Mason; Ella Macleod; Emma Peacock; Katherine Shepherd; Anna Wang; Rowan White



*Peter Turner presenting the Under 14 trophy to Kiruthika*



*Thanks to Edward, who played the players with the bye in the under 8 section.*

# My European Tour

**January – May 2006** By Kevin Thurlow

It is nice to play the occasional tournament and recently I have taken to trying out unusual events. So just after Christmas I made my way to Krakow in Poland for "Cracovia 2005", from 27/12-4/1. This occupies the same slot as Hastings, and is certainly more interesting from a tourist's point of view. Surprisingly enough, it might actually be cheaper to play in Poland! The flights were only about £100 and the cheapest accommodation was £80 for four sharing for the tournament, I stayed in a decent hotel a short bus ride away for £35 a night, including food, and the occasional beer. There were four sections, starting with an over ELO 2100 event with 98 players (I was seeded 82), including 5 GMs and 16 IMs, then under 2100, under 1800, and a junior event for players born 1993 or later! There were 300+ players in all and the playing conditions were excellent. Despite the snow outside, the venue was pleasantly warm. I was the only English player. Few people spoke English, and speaking Polish is not very easy, but it was a great trip. I did not set the tournament alight, (2½/9, 1 less than expected), but all the opponents shook hands before and after the game, and complied with the Laws of chess throughout, which is becoming increasingly rare in England. Krakow is a beautiful city and well worth a visit. I did a day trip to nearby Auschwitz after the tournament had ended, which was very emotional, but well worthwhile. Tournament details on [www.mzszach.l.pl/online/cracovia/2005/en/tekst.html](http://www.mzszach.l.pl/online/cracovia/2005/en/tekst.html).

## **1st Guernsey Spectrum 17-19th March.**

Spectrum have been running weekenders for over ten years, but this was their first visit overseas. The Guernsey Chess Festival has been running every October for 30+ years, and several regulars joined traditional Spectrum players and locals for this interesting event. There were only 30 players but they did enjoy a sunny weekend at the Peninsula Hotel, and the proximity to the beach would have been nice, had it not been for the strong winds sweeping the island. The unusual time limit was all the moves in 100 minutes, which led to some exciting time-scrambles. Unusually for Spectrum, there was only one section but with large grading prizes. This meant most players were in contention at the start of the last round. The tournament was hard-fought but played in a very good spirit. The scheduling of three games on Saturday was too much for me, so

I took the evening off to go out for dinner with friends. 4/6 proved enough for third place, and it was good to visit Guernsey in spring rather than autumn. The 32nd festival runs 15-21 October, and the 2nd Guernsey Spectrum is 16-18 March 2007. See [www.guernseychessclub.org/gg/festival.asp](http://www.guernseychessclub.org/gg/festival.asp) and [www.spectrumchess.com](http://www.spectrumchess.com).

Next stop was Norway for the Gausdal Classics (23rd April to 1st May). The indefatigable Hans Olav Lahlum had organised a ten-player all-play-all grandmaster event and two 20 player Swisses, one with GM/IM norm possibilities and one for Elo-rating, which was heavily populated with talented Norwegian juniors. The package includes entry to the tournament and full board at the Thon Hotel. So you know the full cost at the start of the event, unless you are unwise enough to drink alcohol, which is horribly expensive. A coach is organised from Oslo station and the airport for a small fee, and the scenic drive past Lillehammer and up the mountain to Gausdal is a great introduction to the event. The hotel restaurant designated five tables for the players, so you end up sitting next to a variety of players. It is difficult to think of a tournament with better food. You play one game a day at the old time-limit of 40 in 2, 20 in 1 then all in 30 minutes. I was due to be top seed in the Elo-group, but sadly Wolfgang Unzicker died just before the tournament, forcing the withdrawal of his son, which allowed me to be promoted to GM 'B', seeded 19 out of 20. The tough opposition helped and I was leading the section after 5 rounds and celebrating a draw with black against a Russian GM. The pressure told and I missed the chance of an IM norm, but it was a really enjoyable event, played in excellent conditions, and superbly organised in a friendly atmosphere. And I regained the Elo points lost in Poland! GM Rozentalis won section A, GM Levin won section B, and young Norwegian Mats Bergvoll won section C, ahead of 13 year-old Katrine Tjølset 6½ (NOR) (rated 1940 already!) Ian Thompson only just missed his IM norm in section B, and Stephen Barr and Scott Kenyon played in the Elo-group. The tournament was held right at the end of the skiing season, and with the exception of a small shop, you are more or less confined to the hotel. The surrounding scenery is beautiful, and you can trudge through the snow and breathe the clean mountain air, but that's about it. Lectures and special

events are run during the week, including the wonderful "Team Talking Chess". Teams of 2, 3 or 4 players play a six-board match against another team. Any player can make a move on any board, or the teams may discuss what to play. This often descends into complete chaos, especially when there are time-scrambles. In one game, I found myself conducting a lone battle against a GM and 2 IMs in a difficult middlegame with the expected result! Most of the players speak English, so it is easy to socialise. See [home.online.no/~eirikgu/gausdal2006-2/index.htm](http://home.online.no/~eirikgu/gausdal2006-2/index.htm)

## **3rd Dutch Open Fischer Random tournament 27/5/06, Amsterdam**

Fischer Random is now more correctly known as Chess 960, from the number of start positions, as the idea predates Bobby considerably. Not surprisingly, the Fischer Z club in Amsterdam started a tournament. Unfortunately, this was a holiday weekend in Amsterdam so hotels were not easy to find, and a bit expensive. The tournament was held in a pub, not far from a colourful area of Amsterdam, but the atmosphere was not at all oppressive. It is slightly puzzling for the visitor to see a café with a big sign saying, "No drugs", but you get used to it. The event was a 7 round Swiss, at 20 minutes for each player, with the starting position selected by computer. The king has to start between the rooks, and the bishops start on opposite coloured squares, but otherwise it is random, and very confusing. Most of the experienced players spent 5 minutes on the first move to get their bearings, and I wish I had done the same. The field was a bit weaker than usual, as it clashed with the Olympiad, but there were some useful players there. In round two, (RKBBQRNN from a-h) against Dutch IM Hans Bohm, I cheerfully started 1.d4 d5, 2.Bf4 (the bishop was actually on c1!) to pin his c-pawn, as the king was on b8. Unfortunately, he then went 2....Ng6, which is normally impossible. After 3.Bg3, I am forced to grovel with f3 and Nf2, although I made the best of a bad job with a later e4, and got a good attack on the queenside, but it all fell apart later. Martin Solleveld won with 6/7, I managed 4, to be top (albeit only) non-Dutch player. It was a really enjoyable event in a busy pub. It has to be said the light was a bit gloomy, but it is all part of the atmosphere. The event was really well-organised and the opposition were friendly. See Fischer Z's website at [www.ourworld.compuserve.nl/\\_ht\\_A/fzreykjavik/index.htm](http://www.ourworld.compuserve.nl/_ht_A/fzreykjavik/index.htm)

"Where's your next tournament?" asked a friend at work. "Leeds, for the Civil Service championship." She laughed for some reason.



# Littlewood's Choice

by John Littlewood

## Canadian Open, 17 July 2005

(W) Alexei Shirov  
(B) Mark Bluvstein  
**Petroff Defence C42**

It is a rarity to see Shirov lose in 23 moves against the Petroff defence. Here is how it happened:

**1 e4 e5 2 Nf3 Nf6 3 Nxe5 d6 4 Nf3 Nxe4 5 d4 d5 6 Bd3 Bd6**

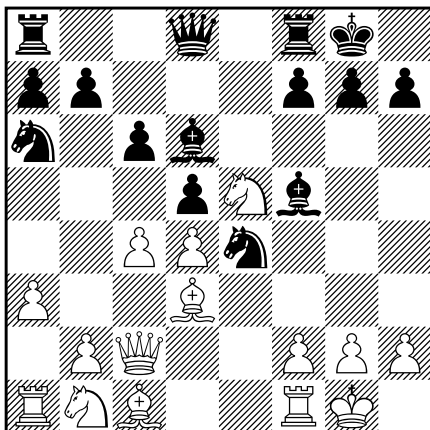
This 'natural' move was usually the choice in the early days of the Petroff, with Marshall achieving great results, as in his famous brevity against Janowski. Nowadays, the 'safer', less committal move 6...Be7 is the norm. Bluvstein, who had clearly prepared this opening against his higher-rated opponent, goes back to basics with spectacular success.

**7 0-0 0-0 8 c4 c6 9 Qc2 Na6!**

Despite the fact that this knight is going to be off-side until it is sacrificed later, I like its aggressive nature as it immediately offers White a pawn for excellent compensation.

**10 a3 Bg4 11 Ne5 Bf5!**

This seemingly suicidal play by the bishop forms part of a deep tactical sequence that is most impressive, particularly when played against a tactical genius such as Shirov. The first point is that the obvious reply 12 f3? fails to 12...Bxe5! 13 dxe5 Qb6+ 14 Kh1 Nf2+ 15 Rxf2 Bxd3.



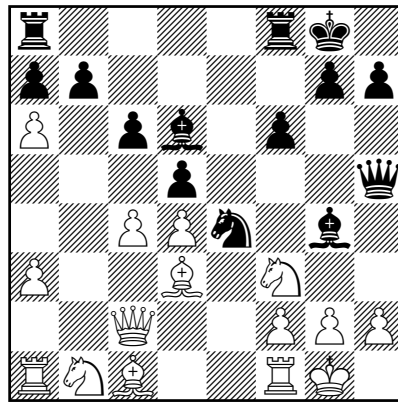
**12 b4**

Now threatening f3.

**12...f6! 13 Nf3 Qe8**

Hastening to bring all his pieces into the attack, even if it necessarily involves a startling sacrifice which would have delighted Marshall.

**14 b5!? Qh5! 15 bxa6 Bg4!**



**16 Re1**

The fact that White is forced to make this move is ominous but Shirov is surely hoping to refute his opponent's ambitious plan.

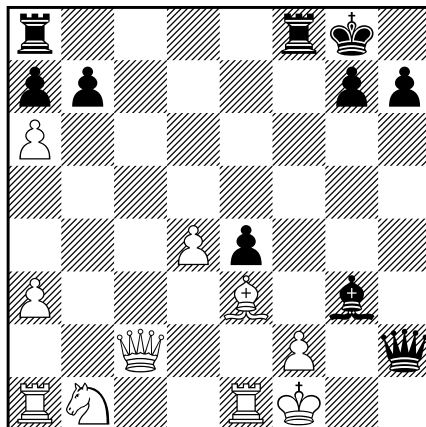
**16...Bxf3 17 gxf3 Qxh2+ 18 Kf1 f5!!**

The point of the exercise, taking advantage of the fact that momentarily White's queen side pieces are mere spectators.

**19 cxd5 cxd5 20 fxe4 fxe4 21 Bxe4 dxe4 22 Be3**

Having opened up the a2-g8 diagonal onto Black's king, White is hoping to refute Black's attack. Indeed, the moment of truth is to involve some hair-raising possibilities that I don't think Bluvstein could have calculated to the end, despite his opening preparation ...

**22...Bg3!**



**23 Ra2?!**

Notkin claims that 23 axb7! would have forced Black to take the draw by perpetual check after 23...Bxf2 24 Bxf2 Qh1+ 25 Ke2 Qh5+! etc, because the win of White's queen by 25...Rxf2+ 26 Kxf2 Qh2+ 27 Ke3 Qxc2 allows 28 bxa8Q+ winning. However, I have a gut feeling that it was precisely to prevent this perpetual check that Shirov opted for 23 Ra2, failing to realize the strength

of Black's final move! The intriguing question for us all is whether Black can do more than take the draw after 23 axb7. Here are some fascinating possibilities: 23...Rae8 and now 24 Qc4+ Kh8 25 Ra2 Rf3! 26 Qc8 Qh1+ 27 Ke2 Rxe3+! 28 Kxe3 Qxe1+ 29 Re2 Bxf2+ 30 Kf4 Bg3+ when, surprisingly, Black has a forced win after (i) 31 Ke3 Qg1+ 32 Kd2 Bf4+ 33 Kc2 Qc1+, or (ii) 31 Kf5 Qf1+ 32 Kg4 Qf4+ 33 Kh3 Qh4+ 34 Kg2 Qh2+ 35 Kf1 Qh1 mate, or

(iii) 31 Kg4 Qxe2+ 32 Kxg3 Qf3+ 33 Kh2 Qf8! etc. This means that White must maintain guard of e3 by playing instead 24 Qb3+ Kh8 25 Ra2 but, since Black's bishop is guarding the vital square b8, he can play 25...Rf3 26 Rc2 Ref8! threatening mate in 3 and giving White no time for Rc8 or b8(Q). White would thus have to play for a win with 27 Ke2!? but I'll pass that calculation over to the reader .... Would Bluvstein have taken the draw instead? Ask him!

**23...Rf3! 0-1**

Black now threatens both the doubling of his rooks by 24...Raf8 and the immediate win by 24...Qh1+ 25 Ke2 Rxe3+!. Seeing this, Shirov resigns.

## Obituary: Ted Johnson

Ted Johnson, President of Hull & District Chess Association for the last 13 years, passed away on Thursday, 22nd June, 2006. He had been ill with leukaemia for the last 9 months and several courses of chemo-therapy had been unsuccessful. Despite this Ted was very positive and took each day at a time, and, like many other chess players refused to resign even though the position was bad.

Ted will be remembered by many chess players from all over the country who attended the Hull Congress which he organised for many years. He was also Treasurer of the Hull Chess Club and was a Captain of one of the club's Yorkshire teams, playing in the I.M.Brown Trophy.

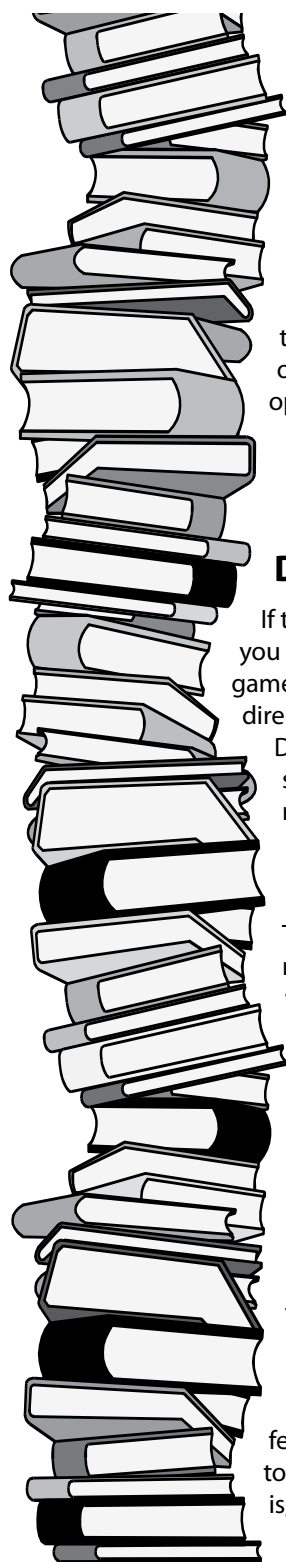
Before retirement, Ted was a Schoolteacher. He also ran chess schools at Croxby and South Hunsley Schools and after retirement, he continued to promote Junior chess in the Hull Chess Club and at various schools.

Ted's other interests were Bridge and Golf. He was a member at Hull Golf Club and Springhead Park Golf Club until his illness late in 2005.

I am sure that all chess players will wish to offer their deepest sympathy to Ted's wife, Edith and to his daughters, Kathryn and Debbie. Older members will probably recall that Debbie was a keen player as a Junior.

I personally will miss Ted greatly, since we worked as a team in promoting chess in Hull and District.

John Lawson



# Book Reviews by Gary Lane

## **Tango!** by Richard Palliser published by Everyman £14.99

It is fairly well known Chris Ward conducts salsa lessons once a week but I was surprised to hear there was another “twinkle toes” on the chess scene. Thankfully, it turns out that Palliser’s Tango is strictly for the chessboard and this book has been recommended to me. There will be a few who have no idea of this opening because the modern name is given to the sequence 1 d4 Nf6 2 c4 Nc6. An ideal way to surprise an opponent there are plenty of examples to inspire Black and Palliser does a good job in explaining the plans.

Palliser uses a mixture of his own games and those by such stars as Joel Benjamin and Alex Yermolinsky to demonstrate there are a surprising amount of tactics if White is careless. For those who want something a little bit different then the Tango could be the answer.

## **Devious Chess** by Amatzia Avni published by Batsford £14.99

If the secret of success is to look at spectacular games and revel in glorious tactics then this book would make you a grandmaster. The theme is entertainment because the examples are chosen carefully to delight with wild games provided that amaze but also are quite educational because they reveal clever resources in seemingly dire positions. The chapter headings such as ‘Coffeehouse Chess’, ‘Peculiar Moves’ and ‘Methods of Conducting Devious Chess’ give an insight to the author’s desire to use tactics to improve your ability. I have to admit that some examples are well known for the studious player but there is still plenty to enjoy. An excellent choice to read on a lazy, Sunday afternoon.

## **Understanding the King’s Indian** by Mikhail Golubev published by Gambit £15.99

The King’s Indian is one of the main defensive weapons against 1 d4 and a new book on the opening appears regularly. The question is whether this latest one will add to your knowledge? I think the answer is yes with deep discussions on all the main lines and even attention on rare ideas that might catch you out at a weekend tournament. There are times when it is like reading a best games collection because Golubev uses as a base only lines played by himself, so sometimes you have to rely on the notes for a decent overall picture of the position. The book is aimed at the practical player and it does well to try and simplify complex plans. A boost for any King’s Indian player.

## **The King** by Jan Hein Donner published by New in Chess £18.99

This is a book that inspires countless people to acclaim the Dutchman as a great writer, while others claim that he was a grumpy old man. Donner died in 1988 but this is the first time that an unabridged English version of his classic book has been made available. It is difficult to compare his style but amongst English writers Nigel Short is the nearest thing with his blunt assessments about people. The author gives an insight into famous tournaments with first hand observations and is always keen to stir things up. This anthology collects together his finest work starting in 1950 and the Dutch grandmaster is happy to antagonise his fellow players with witty remarks or sly observations. However, he could be modest such as when he won a tournament in Venice 1967 ahead of the world champion at that time Petrosian but entitled his column “Chess is, and always will be a game of chance”.

A literary delight for any player with an outrageous sense of humour.

## Results Round-Up

### **Huddersfield Congress**

**12-14 May 2006**

**Open:** Nigel Davies, Southport, 237, 4½; Simon Ansell, York, 219, 4; Richard Tozer, Halifax, 199, 4; James Dannenberg, Leeds, 178, 4

**Major:** Geoff Conroy, Leeds, 139, 4½; Chris Vassiliou, Gatley, 148, 4; Michael Fox, Dewsbury, 132, 4; Anthony Foster, Sunderland, 130, 4

**Minor:** Richard Desmedt, Barnsley, 119, 4½; Matthew Parsons, Huddersfield, 118, 4½; Nicholas Rigby, Leeds, 105, 4; Dave Dunne, Nottingham, 99, 4

### **Oxford University Congress**

**13-14 May 2006**

**Open:** Richard S Jones, Wales, 200, 4½/5; Ben Savage, Oxford 4ncl, 198, 4/5; Paul Pachta, Austria, 197e, 4/5

**Major U170:** Will Burt, Cowley, 147, 4½/5; WF van Randen, Netherlands, 138, 4/5; Jamie Adcock, Reading, 137, 4/5

**Minor U125:** Francisco Lozano, Spain, 4½/5; Chris Leeson, Bicester, 117, 4/5; Nigel Morris, Leamington, 104, 4/5

### **Rhyl Congress**

**19-21 May 2006**

**OPEN:** Simon Hood, Broughton Arms, 181, 4/5; Ian Campbell, Aigburth, 166, 3½/5; Mike Surtees, Bolton, 185, 3½/5; David Levens, West Nottingham, 155, 3½/5

**MAJOR U155:** Raymond Gamble, Spondon – Derby, 148, 4½/5; Geoffrey W Sage, Southport, 149, 4½/5; Graham Bromle, Chester, 135, 4/5; Peter Mulleady, Atherton, 140, 4/5; William J Taylor, Colwyn Bay, 134, 3½/5

**MINOR U120:** Eric Prophet, Manchester, 104, 4½/5; Colin Gardiner, Falmouth, 117, 4/5; Neville Layhe, Caergwrle, 118, 4/5

**TEAM PRIZE:** Chester



## Central London Rapidplay

21 May 2006

**Major U175:** Tim Rogers, Bourne End, 6/6; Robin Haldane, Streatham & Brixton, 4/6; David Rowson, Kingston, 4/6; Mark Josse, Surbiton, 4/6; Conrado Quintos, Hastings & St Leonards, 4/6; Peter Staneland, Hounslow, 4/6; Jain Akash, Pinner, 4/6; Samuel Franklin, Crystal Palace, 4/6

**Minor U125:** Peter Anderson, Kings Head, 5½/6; Leszek Jaworski, Slough, 5/6; Nicholas Fordham, Stepney, 4½/6; Shiela Dines, Surrey Junior, 4½/6; Maurice Siegel, Westcliff, 4½/6

## Ilford Congress

27-29 May 2006

**Open:** Ankush Khandelwal, 177, Nomads, Notts, 5½/6; Philip Morris IM, 220, Charlton, 4½/6; Robert Eames, 200, Hackney, 4½/6; Philip Bonafont, 172, Hemel Hempstead, 4/6

**Major:** Donny Muter, 155, 5½/6; Robin Huq, 153, Battersea, 5/6; Nigel Kerby, 128, Bishop Stortford, 4½/6; Kazi Rahman, 151, Metropolitan, 4½/6; Colin Ramage, 148, Barking, 4½/6

**Minor:** Michael Mutale, 100, Barking, 5½/6; F Richard Elliott, 109, Sudbury, 5/6; Olurotimi Rowland, 5/6; Pepe Vives, 83, Hackney, 4½/6; Alan Fraser, 81, Beckenham & Bromley, 4½/6; Joseph Quinn, 74, Crowborough, 4½/6; Dashiell Shaw, 72, 4½/6

## Braille CA Stephen Eastwick-Field Memorial Tournament

20-27 May 2006

**Upper Section:** Stan Lovell, Redcar, 103, 5/6; David Hodgkins, Leamington Spa, 106, 4½/6; John Gallagher, Leeds, 128, 4½/6; Brian Perham, Colchester, 67, 4/6

**Lower Section:** Christine Brown, Cheltenham, 42, 6/6; Geoff Patching, Penzance, 45, 5/6; Bob Brown, Cheltenham, 32, 3½/6; Dorothy Hodges, Bristol, 5, 3½/6

## South Lakes Congress

2-4 June 2006

**Open:** Stuart Haslinger, Formby, 228, 4½; Jeff Horner, Bolton, 213, 4½; Mike Surtees, Bolton, 185, 3½; Paul Kemp, Linton, 175, 3½

**Major:** Malcolm Armstrong, Stafford, 158, 4½; John Milnes, Bradford Central, 152, 4; Dean Hartley(Dis), Amber valley, 153, 3½; Antonio Moneva-Jorden, Tynemouth, 149, 3½; Geoff Sage, Southport, 149, 3½; Robert Clegg, Huddersfield, 137, 3½; Alan Prince, Edinburgh Civil Service, 154, 3½; Mike Lally, Phoenix, 146, 3

**Intermediate:** Neil Coward, Blackpool, 130, 4; Barry Sandercock, Chalfont St Giles, 128, 4; Robert France, Wandering Dragons, 127, 4; Craig Whitfield, Chedderton & Leek, 123, 4; Sheila Dines, Surrey Junior, 126, 3

**Minor 1:** Nick Rigby, QEGS Wakefield, 105, 4½; Peter Smith, Bishop Auckland, 101, 4; Robert Berry, Bishop Auckland, 95, 4; Stefan Reiss, St Vincents, Hull, 105, 3

**Minor 2:** Paul Horman, Morecambe, 90, 4; Bill Burgess, Austin Friars, 83, 4; Alan Fraser, Beckenham & Bromley, 81, 4; George King, Arnside, 81, 4; Nathan Talbot, St Helens, 77, 4; Patrick Docherty, Denton, UNG, 4; Eric Fleet, Barrow, 87, 3½; Bill Clews, Leyland, 87, 3

## Lincolnshire County

### Championships

3-4 June 2006

Nigel Birtwistle (Boston) 4/5; Kevin McCarthy (Boston) 3.5/5; Ayman Hammam (Lincoln); David Coates (Lincoln); Grading Prizes U150 Denis Georgiou (Scunthorpe); Geoff Collyer (Louth); U125 & The Quilter Trophy Mike Kelly (Grimsby)

## Yeovil Congress

9-11 June 2006

**Open:** Paul Helbig, Bath, 4; Gerry Jepps, Frome, 4; Ian Ponter, Downend, 4; Paul Carpenter, St Marychurch, 3; John Gorodi, Teignmouth, 3

**Intermediate:** Richard Desmedt, Netherton, 4½; Roger Waters, Taunton, 4; Alan Papier, Clifton, 4; Duncan Macarthur, Keynsham 4; Paul Brackner, Weymouth, 3

**Minor:** Alan Fraser, Beckenham, 4½; James Galloway, Andover, 4; Simon Gray, Yeovil, 3½; Alan Christopher, Bath, 3½; Phil Foley, Upminster, 3½; Barry Davies, Keynsham, 3½

## Golders Green Rapidplay

10 June 2006

**Open:** Ethelontis, Alexandros N, e209, 4½; Alfred, Nathan SW, 192, 4; Osipiak, Grzegorz, 179, 3

**Major U160:** McCague, Brian L, e207, 5½; Phinikettos, Yiannis, e175, 4; Wilson, David, e177, 4; Crichton, Martin, 150, 3½

**Minor U130:** Jiang, Jimmy, 121, 5; Dines, Sheila J, 123, 4; Kendall, Paul, 114, 4; Woo, Tyrone, 123, 4; Thursby, Richard C, 112, 4; Sandercock, E Barry, 122, 4; Pepe, Salvatore, 125, 4; Morrey, Peter, 122, 3½

**Amateur U100:** Davison, Chris, 66, 5½; Stewart, Ashley, 97, 5; Periasamymanjula, Manibharathi, 88, 4½

## Leek Rapidplay Congress

11 June 2006

**Cheddleton:** M Surtees, Bolton, 188, 7/9; A Legge, Wallasey, 157, 7; D Buxton, Cheddleton, 177, 6½; G Thomas, Stourbridge, 157, 6½

**Leek:** Yangshi Yu, Cheddleton, 140, 6/9; E Taylor, Hoylelake, 132, 5½; S Jukes, Stourbridge, 125, 5½; Henrik Stepanyan, Sutton Coldfield, ung, 5½; C Gartside, High Peak, 128, 5; G Ellis, Widnes, 124, 5; S Dines, Surrey, 123, 5

**St. Edward's:** S Lloyd, Chester YMCA, 99, 7½/9; K Lockett, Altrincham, 90, 7; J Waddington, Bolton, ung, 7; S Shepherd, Cheshire, ung, 7; D Hallen, Cheddleton, 81, 6½

## Stewarton Bonnet Guild

### Chess Allegro

11 June 2006

**Open section:** 1st Calum MacQueen, Giffnock Chess Club; 2nd Roddy McKay, Cathcart; 3rd Hugh Brechin, Edinburgh

**Major section:** 1st John McBride, Dunfermline; 2nd Stephen Hamilton, Ayr; 3rd Crawford Macnab, Edinburgh Civil Service; 4th Rory Chan, Bishopbriggs

**Minor section:** 1st Clement Sreeves, Concord ; 2nd Andrew McClement, Campbelltown; 3rd = Brendan Carlin, Dalmauir; Jim Johnston, East Kilbride; Jason Lai, St Aloysius College; Stuart MacQueen, Bishopston

**Under 14 section:** 1st Ali Roy, Carrick; 2nd Sarah Speir, Giffnock; 3rd James Gilmour, Greenwood

**Under 12 section:** 1st Peter Devenny, Giffnock; 2nd Alice Lampard, Carrick; 3rd Robert Childs, Hamilton; 4th Gerald Chan, Glasgow; 5th Kieren Gibson, Irvine

## Spectrum Chess - 2nd Cardiff Congress

24-25 June 2006

**Challengers Tournament:** Barry S Miles, Eastcote, 85, 100%; Alan Bloom, Willesden, 90, 60%; Ashley Davis, Headless Cross, 60%; Adam Howell, Llantwit Major, 1198 elo, 60%  
**Minor Tournament:** Richard E Desmedt, Wombwell, 119, 100%; Timothy S Allen, Battersea, 100, 60%; Mani Periasamymanjula, Ashtead, 93, 60%; Ian P Blencowe, Gloucester, 113, 60%; Beryl Hughes, Penarth, 116, 60%  
**Major Tournament:** Mark Cooke, Barry, 1568 elo, 80%; Stephen R Mitchell, Slough, 142, 80%; David C Jiles, Penarth, 1758 elo, 70%; Katherine Djabri, Metropolitan, 163, 60%

**Open Tournament:** Tristan A Cox, Sutton Coldfield, 169, 80%; Zafer M Djabri, Metropolitan, 166, 70%; A Tyson Mordue, Keynsham, 195, 70%; Lee Davis, Barry, 2025 elo, 60%; Jane Richmond, Brown Jack, 168, 60%; Johnathan D Bourne, Brown Jack, 179, 50%

## KJCA Grand Prix Final

2 July 2006

**Under 9:** Gautham Reddiar, Ashtead CC, 16, 6/6; Alexei Davis, Mottingham, 4/6; Raunak Rao, Beckenham, 4/6; Nicholas Clanchy, Balham, 4/6

**Under 11:** Andrew Turner, Tonbridge & Hadlow CC, 76, 5½/6; Jasdeep Gahir, Lewisham CC, 54, 4½/6; Joe Kidson, Dulwich, 91, 4½/6; Raunaq Cavet, Dulwich, 37, 4/6; Baven Balendran, Beckenham, 43, 4/6; Timur Basaran, Bexley, 12, 4/6; Joshua Meyer, Peckham, 50, 4/6

**Under 14:** Alex Galliano, East Grinstead CC, 85, 4/5; David Grant, East Grinstead CC, 114, 4/5; Sheila Dines, Sanderstead, 123, 4/5; Robert Maguire, Beckenham & Bromley CC, 90, 3½/5; Georgiana Philippou, West Wickham, 38, 3/5

**Under 18:** Sam Evington, Maidstone, 95, 4/5; Lyall Bayliss, Crowborough CC, 128, 4/5; Siddhu Viswanath, Petts Wood & Orpington CC, 106, 3/5

# ECF GRAND PRIX

## Leader Boards

6th July 2006

Players' names in bold have already reached the maximum possible score and to increase their score must replace a lower scoring event with a higher scoring event.

### Grand Prix (max 250 pts)

- 1 **Greet, Andrew, Hillsmark K., ..... 229.5**
- 2 **Hebden, Mark, Leicester, ..... 227.5**
- 3 Gormally, Danny, Guildford, ..... 189
- 4 Ansell, Simon, Hackney, ..... 149.5
- 5 Williams, Simon, Hillsmark K., ..... 142

### Female Prix (max 125 pts)

- 1= **Parmar, Amisha, West Notts, ..... 99**
- Dines, Sheila, Old Palace, ..... 99**
- 3 Houska, Jovanka, Slough, ..... 94
- 4 **Chevannes, Sabrina, Checkmate, ..... 91**
- 5 Arakhamia-Grant, Ketevan, Edinburgh, ..... 88

### Junior Prix (max 125 pts)

- 1 **Khandelwal, Ankush, Nottingham, . 105.5**
- 2 **Franklin, Samuel, Crystal Palace, ..... 98**
- 3 Dines, Sheila, Sanderstead, ..... 95.5
- 4 Poobalasingam, Peter, Richmond, ..... 94
- 5 Jain, Akash, Pinner, ..... 87.5

### Senior Prix (max 125 pts)

- 1 **Desmedt, Richard, Netherton, ..... 115.5**
- 2 **Hjort, Helge, Hendon, ..... 103**
- 3 **Fraser, Alan, Beckenham, ..... 99.5**
- 4 **Kearsley, Raymond, Wimbledon, ..... 98**
- 5 **Sandcock, Barry, Chalfont St Giles, .... 93**

### Disabled Prix (max 75 pts)

- 1 **Hartley, Dean, Amber Valley, ..... 56.5**
- 2 **Rudd, Jack, Bristol, ..... 56**
- 3 **Blencowe, Ian, Gloucester, ..... 45.5**
- 4 Lilley, Graham, Aigburth, ..... 39
- 5 Whitfield, John, Ottery St Marys, ..... 32

### Graded Prix (174-150) (max 125 pts)

- 1 **Muter, Donny, Fulham, ..... 112**
- 2 O'Gorman, Brendan, London, ..... 66.5
- 3 Huq, Robin, Battersea, ..... 59
- 4 Round, Michael, Rose Foregrove, ..... 52
- 5 Milnes, John, Bradford, ..... 52

### Graded Prix (149-125) (max 125 pts)

- 1 **Goodfellow, Russell, Tunbridge Wells, 110**
- 2 Clegg, Robert, Huddersfield, ..... 80.5
- 3 Fallowfield, Jeremy, Stourbridge, ..... 71.5
- 4 Lord, Peter, Hayes, ..... 69
- 5 Adcock, Jamie, Reading, ..... 56.5

### Graded Prix (124-100) (max 125 pts)

- 1 **Eckloff, Colin, Birmingham, ..... 111.5**
- 2 Curtis, David, Haywards Heath, ..... 82
- 3 Blackburn, John, Holmes Chapel, ..... 74.5
- 4 Mutale, Michael, Barking, ..... 59.5
- 5 Jaworski, Leszer, Slough, ..... 58.5

### Graded Prix (U100) (max 125 pts)

- 1 Barker, Michael, Ashton-under-Lyme, ..... 59
- 2 Strickland, Ian, Leeds, ..... 54
- 3 Derbyshire, Warren, Chorley, ..... 42
- 4 Galloway, James, Andover, ..... 40
- 5 Dunne, David, Nottingham, ..... 40

# Calendar of Events

(For a more comprehensive list of events visit our website at [www.englishchess.org.uk](http://www.englishchess.org.uk))

\* denotes English Chess Federation Grand Prix

@ denotes FIDE Rated Event

# denotes British Championship Qualifying Tournament

~ denotes ECF Graded Event

#### ~\* 12 Aug **GOLDERS GREEN RAPIDPLAY**

St Alban's Church Hall, NW11.  
Adam Raoof (Tel/Fax: 020 8202 0982;  
Email: [adamraoof@yahoo.com](mailto:adamraoof@yahoo.com))

#### 18-20 Aug **MARYMASS CONGRESS**

Irvine.  
S Clark (Tel: 01294 278 638, Email: [stephenclarks@aol.com](mailto:stephenclarks@aol.com))

#### ~\* 18-20 Aug **THANET CONGRESS**

Thanet Campus, Broadstairs.  
T Hargreaves (Tel: 01227 274885,  
Email: [info@thanetchess.org.uk](mailto:info@thanetchess.org.uk))

#### ~ 19 Aug **6th NCCU JUNIOR CHAMPIONSHIPS**

Hilton Blackpool Hotel.  
Bill O'Rourke (Tel: 01706 627874,  
Email: [worchessnu1@ntlworld.com](mailto:worchessnu1@ntlworld.com))

#### ~\* 19-20 Aug **BRITISH LAND UK CHESS CHALLENGE TERAFINAL**

M Basman (Tel: 07715 041320,  
Email: [ukchesschallenge@aol.com](mailto:ukchesschallenge@aol.com))

#### ~\*# @ 24-27 Aug **ECF 1st BROMSGROVE CHESS FESTIVAL**

(inc. ECF Young Masters), Bromsgrove School, Worcestershire.  
*Players born after 1st September 1990 can apply for invitation to enter.*  
Cyril Johnson (Tel: 0116 260 9012,  
Email: [ecfjuniorchess@yahoo.co.uk](mailto:ecfjuniorchess@yahoo.co.uk))

#### ~\* 26 Aug **BROMSGROVE ONE DAY CONGRESS**

(open to all), Bromsgrove School, Worcestershire.  
Cyril Johnson (Tel: 0116 260 9012,  
Email: [ecfjuniorchess@yahoo.co.uk](mailto:ecfjuniorchess@yahoo.co.uk))

#### ~ 26-28 Aug **42nd BERKS & BUCKS CONGRESS**

Nine Mile Ride Primary School, Finchampstead.  
Nigel Dennis (Tel/Fax: 01491 576052,  
Email: [nigelwdennis@btinternet.com](mailto:nigelwdennis@btinternet.com))

#### ~\* @ 26-28 Aug **31st CHORLEY CONGRESS**

Parkland High School, Chorley.  
D Clayton (Tel: 01257 275053,  
Email: [dgclayton@btinternet.com](mailto:dgclayton@btinternet.com))

#### ~\* 26-28 Aug **34th HEREFORD WEEKEND CONGRESS**

Aylestone School.  
W A Archer (Tel: 01432 265712)

#### ~\*# @ 26-28 Aug **SHOPPING.NET 29th SURREY CONGRESS**

Guildford University Sports Hall.  
R Jones (Tel: 01372 813487,  
Email: [td@surreychesscongress.co.uk](mailto:td@surreychesscongress.co.uk))

#### 28 Aug **CCF OPEN BLITZ**

Coulsdon.  
Howard Curtis & Scott Freeman (Tel: 020 8645 0302,  
Email: [chess@ccfworld.com](mailto:chess@ccfworld.com))

#### ~ 28 Aug **LINCOLN RAPIDPLAY**

St Peter & St Paul Parish Centre.  
K McCarthy (Tel: 07778 155333, Email: [PBCHES@AOL.COM](mailto:PBCHES@AOL.COM))

#### ~ 28 Aug - 1 Sep **CCF INTERNATIONAL**

Coulsdon. Howard Curtis & Scott Freeman (Tel: 020 8645 0302,  
Email: [chess@ccfworld.com](mailto:chess@ccfworld.com))

#### ~ (p) Sep **HARTLEPOOL ONE DAY RAPIDPLAY**

G Marshall (Tel: 01429 426374,  
Email: [grahammarshall2000@hotmail.com](mailto:grahammarshall2000@hotmail.com))

#### \* @ 1-3 Sep **33rd GRANGEMOUTH CONGRESS**

Grangemouth Town Hall. J Watson (Tel: 01324 714314)

#### ~\* 2-3 Sep **CCF AUTUMN CONGRESS**

Coulsdon.  
Howard Curtis & Scott Freeman (Tel: 020 8645 0302,  
Email: [chess@ccfworld.com](mailto:chess@ccfworld.com))

#### ~\*# @ 3-9 Sep **56th PAIGNTON CONGRESS**

Oldway Mansion, Paignton.  
Alan Crickmore (Tel: 01752 768206 before 10 pm,  
Email: [plymouthchess@btinternet.com](mailto:plymouthchess@btinternet.com))

#### \*# 6-15 Sep **EUROPEAN UNION INDIVIDUAL CHAMPIONSHIPS**

Liverpool World Museum.  
D Welch (Tel: 0151 733 1866,  
Email: [dave.welch@blueyonder.co.uk](mailto:dave.welch@blueyonder.co.uk))

#### ~\* 9 Sep **GOLDERS GREEN RAPIDPLAY**

St Alban's Church Hall, NW11.  
Adam Raoof (Tel/Fax: 020 8202 0982;  
Email: [adamraoof@yahoo.com](mailto:adamraoof@yahoo.com))

#### ~\* 10 Sep **20th LEAMINGTON RAPIDPLAY**

Royal Spa Centre.  
J Rashleigh (Tel: 01926 842523,  
Email: [jonathan.rashleigh@virgin.net](mailto:jonathan.rashleigh@virgin.net))

#### ~\*# 15-17 Sep **H E ATKINS MEMORIAL CONGRESS**

Wyggeston College, Leicester.  
S Hewitt (Tel: 07845 518972, Email: [atkins@leicesterchess.co.uk](mailto:atkins@leicesterchess.co.uk))

#### 16 Sep **4th AMCA GRAND PRIX**

Yateley Manor School, Hampshire.  
D Archer (Tel: 01483 810266,  
Email: [david@andrewmartinchessacademy.com](mailto:david@andrewmartinchessacademy.com))

#### ~ 16 Sep **ENGLISH CHESS CHALLENGE: CHAMPION OF CHAMPION'S EVENT**

Coulsdon.  
Howard Curtis & Scott Freeman (Tel: 020 8645 0302,  
Email: [chess@ccfworld.com](mailto:chess@ccfworld.com))

#### 16 Sep **1st PARISH CHURCH OF ST JOHN RAPIDPLAY CONGRESS**

High Street, Walsall Wood.  
Hazel & Ray Dolan (Tel: 01543 370136)

#### ~ @ 16-17 Sep **4NCL**, Divisions 1, 2, & 3, Initial Style Conferences, Sunningdale.

Mike Truran (Tel: 07993 708645,  
Email: [mike@mtruran.fsnet.co.uk](mailto:mike@mtruran.fsnet.co.uk))

#### ~\* 16-17 Sep **NORTH ESSEX CHESS LEAGUE CONGRESS**

Braintree Leisure Centre.  
R Sharman (Tel: 01206 231025,  
Email: [Roger.Sharman@essexroofing.co.uk](mailto:Roger.Sharman@essexroofing.co.uk))

#### ~ 17 Sep **37th BARNET KNIGHTS TOURNAMENT**

Goldbeaters Primary School, Edgware.  
L Winston (Tel: 020 8959 8376,  
Email: [laurie@barnetknights.com](mailto:laurie@barnetknights.com))

#### 17 Sep **CARLISLE RAPIDPLAY**

Austin Friars School, Carlisle.  
S Cassidy (Email: [sydcassidy@austinfriars.cumbria.sch.uk](mailto:sydcassidy@austinfriars.cumbria.sch.uk))

#### ~\* 23 Sep **CCF RAPIDPLAY**

Coulsdon.  
Howard Curtis & Scott Freeman (Tel: 020 8645 0302,  
Email: [chess@ccfworld.com](mailto:chess@ccfworld.com))

#### ~ 23 Sep **CROWBOROUGH RAPIDPLAY CONGRESS**

United Church, Croft Road.  
Simon Deere (Tel: 07787 808212)

#### ~ @ 23-24 Sep **4NCL**, Division 4

Paragon Hotel, Birmingham.  
Mike Truran (Tel: 07993 708645,  
Email: [mike@mtruran.fsnet.co.uk](mailto:mike@mtruran.fsnet.co.uk))

#### ~\* 23-24 Sep **SPECTRUM CHESS - 10th DUDLEY CONGRESS**

The Ward Arms Hotel.  
Norman Went (Tel: 01708 551617,  
Email: [spectrumchess@hotmail.com](mailto:spectrumchess@hotmail.com))

#### ~\* @ 23 Sep - 1 Oct **15th MONARCH ASSURANCE ISLE OF MAN INTERNATIONAL**

Ocean Castle Hotel, Port Erin.  
D Hemsley (Tel: 01624 833742, Email: [chess@manx.net](mailto:chess@manx.net))

#### ~\* 24 Sep **CENTRAL LONDON RAPIDPLAY**

International Students House, W1W 5PN.  
Todd (Tel: 020 8381 4406, Email: [ctodd@hotmail.co.uk](mailto:ctodd@hotmail.co.uk))

#### ~ 24 Sep **WORCESTERSHIRE OPEN JUNIOR RAPIDPLAY**

Christopher Whitehead's Language College.  
A Moore (Tel: 07789 904835,  
Email: [badandy2000@hotmail.co.uk](mailto:badandy2000@hotmail.co.uk))

The views expressed in ChessMoves are those of the Editor and Contributors they are not official policy of the ECF unless specifically stated.

For details of Advertising Rates please contact the ECF direct at THE WATCH OAK, CHAIN LANE, BATTLE, EAST SUSSEX TN33 0YD tel: 01424 775222 fax: 01424 775904 email: [office@englishchess.org.uk](mailto:office@englishchess.org.uk) website: [www.englishchess.org.uk](http://www.englishchess.org.uk)