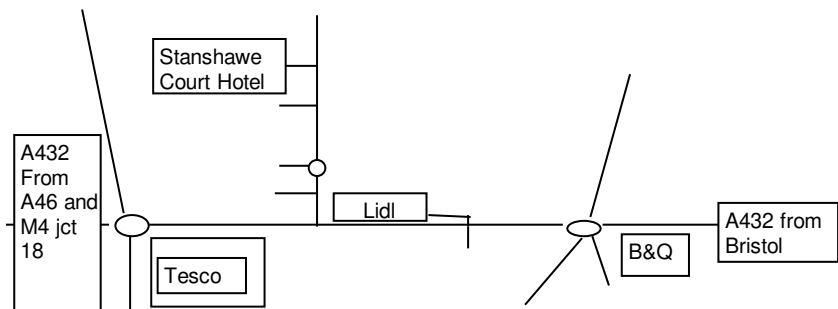


The organisers' decisions will be final in all matters relating to this tournament. This may include altering the sections, or moving players between them if necessary.

All mobile phones must be switched off.



Send entries to: Graham Mill-Wilson, 8 Lyndale Road, Yate, Bristol, BS37 4DD Phone 07790167415 email - tugmw@blueyonder.co.uk

ENTRY FORM		CSM10
<i>Please use ECF standard play grade (or equivalent).</i>		
NAME.....		
ADDRESS.....		
CLUB.....	GRADE.....	
DOB (if junior).....	SECTION.....	
ENTRY FEE	£
DISCOUNT (Stu/Dis/OAP/Jun/UB)	£
<i>please circle one</i>		
DONATION? (many thanks)	
TOTAL	£
cheques/PO's payable to: Yate & Sodbury Chess Club		

YATE & SODBURY CHESS CLUB

presents

CHIPPING SODBURY RAPIDPLAY

**STANSHAWE COURT HOTEL, STANSHAWE COURT DRIVE,
YATE, BRISTOL BS37 4EA**
(off Sundridge Park, which is off Kennedy Way (A432))

Saturday 15th May 2010

6 rounds - 25 mins. on each clock per round.

3 sections - Open, Major (U165), Minor (U130)

Rounds begin at: 1100, 1200, 1300, Break for refreshment
1500, 1600, 1700.

The venue has a separate area for analysis, plus a bar with a large lounge. It is set in its own grounds, with a public park adjacent. Ample car parking on site.

BRISTOL GRAND PRIX MULTIPLE OF 5

The Grand Prix is only open to Bristol league players, but this does not preclude others from participating in the tournament, and winning cash prizes.

Entry fee £15 all sections. (inc. light buffet at half time)

Juniors (under 18 on 1/1/10), unemployed, OAP's, students and registered disabled may deduct £2.

Only one reduction per entry.

PRIZES - (All sections) 1st £40 2nd £20

There may be other prizes, depending on entry.

Except in the Open section, ungraded players may only win half of main prizes, and are not eligible for grading prizes.

Bristol League Website: www.chessit.co.uk