

Chess Moves

The newsletter of the English Chess Federation | November/December 2010

World Youth Chess Championships 2010



The redoubtable Anna Wang - be afraid ...

We met at Gatwick Airport at 6.45am on Tuesday 19th October and checked in for our BA flight to Thessaloniki. Once we landed we were taken to our hotel by coach. On the coach we were informed that we are not actually staying in the playing venue but 10 km away. This was disappointing for all of us as we all thought we were staying in the main chess venue.

We reached the hotel at about 5 pm and settled into our rooms and met for dinner – as soon as we entered the hotel restaurant we realised that the variety of cooked food, salads and range of fruit and desserts were going to be enough to cater for all dietary requirements! This was good news. After an enjoyable dinner, most of us went to bed reasonably early, but Lawrence Cooper was busy as he attended the technical meeting at 10 pm ... *now read on*

[continued on Page 7]

Editorial

'I Like to Move It Move It' FEAT. Left Hand Down a Bit - the ECF Office Trio - a shoo-in for the Christmas No.1, get your copy now ...

With the reduction of the staff at the ECF Office from five to three, a move to smaller and more reasonably-priced premises seemed favourite, so with steely gaze and iron thews, we moved ourselves, five PCs, desks, tables, filing cabinets, printers, files, chairs, wiring, telephones ... twenty yards across the hall and into one office instead of two. With first-class help from local network company Terinea and slightly less than first-class help from our friends British Telecom, this was achieved over the weekend and week following the 12th November.

As we approach the festive season, the office staff would like to wish all chess players, the old, the young, the in-betweeners, good luck for the coming year. Christmas brings with it the Cruse Charity Christmas Chess Congress, the 86th Hastings International Chess Congress, the London Junior Chess Championships, the London Christmas Congress and many more playing opportunities before and after, so gird your loins and get your grades up!

'I have always thought of Christmas time, when it has come round, as a good time; a kind, forgiving, charitable time; the only time I know of, in the long calendar of the year, when men and women seem by one consent to open their shut-up hearts freely, and to think of people below them as if they really were fellow passengers to the grave, and not another race of creatures bound on other journeys' - Charles Dickens
- *Tina and the team*

Make your presence felt - write to the ECF

We'd like to get a regular letters page going in Chess Moves, so we're inviting reader e-mails and letters. You can email us on chessmoves@englishchess.org.uk or send a good old-fashioned letter to The ECF, The Watch Oak, Chain Lane, Battle, East Sussex TN33 0YD (please mark your envelope 'Chess Moves'). Any chess-related subject matter is OK - we'll forward any questions you have to the relevant parties and see if we can't publish answers concurrently or in the following issue

Copy deadline - 10th January 2011

Report on Annual General Meeting by Andrew Farthing

The Annual General Meeting of the English Chess Federation took place in Birmingham on Saturday, 16 October 2010. In the absence of the Non-Executive Chairman, who was unwell, Chief Executive Chris Majer took the chair. Full Minutes of the meeting will be published in due course. What follows is a summary of the main decisions taken.

Applications for Membership

Three applications for membership were approved:

- Northamptonshire Chess Association (County Association)
- British Universities' Chess Association (Other Organisation)
- ChessPoint Services (Other Organisation)

The last of these is particularly interesting.

ChessPoint Services has established a number of public venues in Northamptonshire (for example, at cafés and libraries) where equipment is provided for chess to be played for free. Along with weekly coaching sessions and tournaments at a central venue, the ChessPoint Academy, the organisation enters teams in the Junior 4NCL. This innovative approach to bringing chess to the local community is quite striking and one wishes it every success. Those interested in finding out more can do so at www.chesspoint.co.uk/index.html.

Recognition

Reports were received and approved from members of the Board and other Officers. Following this, ECF President CJ de Mooi proposed a vote of thanks to outgoing Officers:

- Chris Majer (Chief Executive)
- Alan Martin (Non-Executive Director, Manager of ICT, Member of Finance Committee)
- John Paines (Non-Executive Chairman)
- David Thomas (Manager of Grading & Rating)
- Mike Adams (Chairman of Finance Committee)
- Ljubica Lazarevic (Manager of Women's Chess)

It is no exaggeration to say that the ECF would be unable to function without the services of those who volunteer their time and effort, and Council unanimously supported the President's expression of appreciation.

Council was also reminded that with the retire-

ment of Office Manager, Cynthia Gurney, the ECF had lost the services of one of its most loyal and valuable contributors. In recognition of what Cynthia and husband Bob had given to English chess over so many years, Council unanimously approved the appointment of Cynthia and Bob as Honorary Life Members of the Federation.

Other Awards:

- President's Award for Services to Chess – Julie Johnson
 - Club of the Year – Horsham Chess Club
 - Small Chess Club of the Year – St Helens Chess Club
 - Chess Website of the Year – the website of the Kingston Chess Club (www.kingstonchess.org.uk)
 - Congress of the Year – e2e4
 - British Chess Educational Trust – two awards this year, to Homefield School and St Teresa's Primary School
- There was no award for Chess Magazine of the Year (no nominations).

Appointments and Elections

There were no contested elections at this year's AGM. Only one candidate prompted significant discussion (Malcolm Pein, who was standing for one of the two Non-Executive Director positions), following which Malcolm was not elected.

Regrettably, this particular election featured a number of procedural errors. See my separate statement on this matter elsewhere in the newsletter.

As a result of the elections, the Board is now as follows:

President – CJ de Mooi

Chief Executive – Andrew Farthing

Director of Finance – Gareth Caller

Non-Executive Director – John Wickham

Director of Home Chess – Adam Raoof

Director of Junior Chess & Education – Peter Purland

Director of International Chess – Lawrence Cooper

Director of Marketing – Stewart Reuben

In accordance with the Federation's procedures, the Board exercised its right to make appointments to the two vacant Board positions at its meeting on 1st November as follows:

Non-Executive Chairman – Mike Gunn

Non-Executive Director – Jack Rudd

Other appointments made at the AGM included:
FIDE Delegate – Nigel Short

Members of the Finance Committee – Ray

Clark, John Philpott and Ian Reynolds
Chairman of the Governance Committee – John Philpott
Members of the Governance Committee – Richard Haddrell, Andrew Leadbetter and John Paines

Other Business

This report cannot cover all of the business of the AGM in detail, but I should like to highlight four specific items. Each, in its way, marks an important change.

Future funding: Currently, the ECF's activities are funded through a complicated combination of Game Fee (payment per player per game) and Membership (various forms). In the light of the ending of the Government grant to the ECF, the Board was seeking to create a simpler solution, easier and cheaper to run, so that the highest possible percentage of the money paid by English chess players and organisations is available to support chess activities.

Council debated four options. These were: (1) No change; (2) Using Game Fee only, i.e. no membership schemes; (3) Membership only, i.e. everyone becomes a member and there is no fee for playing a graded game; (4) Retaining both Game Fee and Membership, but simplifying them, e.g. fewer membership categories. At this stage, the Board sought a steer from Council as to which options were clearly unacceptable, so that the focus could shift only to those options which might prove worthwhile. In the event, options (1) [No change] and (2) [Game Fee only] were eliminated. Work will now begin on detailed proposals for the remaining options, ready for a decision at the Finance Council meeting in April 2011.

Improved online grading information: The Board updated Council on its plans to enhance the information available on the ECF online grading database. The intention is to give everyone access to detailed game data, so that you will be able to check throughout the year what results have been submitted for grading. This in turn means that corrections can be advised and made during the season, rather than in one go at the end. For ECF members, there will be even more information available – not yet finalised but likely to include access to prior-year game details among other things.

These changes are a win-win: better for players, who receive more information, more frequently updated; better for the ECF's grading team, who no longer have to undertake a frenetic end-of-

season process to identify errors and omissions in the submitted results.

More frequent grading lists: Council approved the idea of more frequent standard play grading lists. Currently, the ECF stands out – not in a good way – by having only one grading list a year. The plan is to issue updated grades every six months. The grades will be calculated in the same way, so the length of the rolling period being used for grading will be the same. The point was rightly made that some leagues and other season-long events use grade-restricted categories, so a mid-season change in grade could be awkward. In such situations, the rules of the competition would need to state (say) that the grade applicable at the start of the event would apply throughout.

Allowing the Board to make decisions by e-mail through a majority vote: This is a procedural change, but it may make a big difference to how quickly the Board can respond to issues.

Previously, Board decisions had to be made during Board meetings (face-to-face or teleconference); decisions could only be made by e-mail if all Board members agreed to the proposal in question. In the past, it has proved very challenging to get every Board member to confirm agreement (someone is generally on holiday or otherwise out of contact).

Now, a decision can be made by e-mail provided an absolute majority of Board members (not just a majority of those voting) support it. This should give the Board scope to resolve simple issues quickly between meetings, leaving time at those meetings for debate on the questions which need it.

There was one item which had to be postponed due to time constraints: a proposal to consider the merits of FIDE rating the County Championship. This will now be tabled at the April 2011 Council meeting.

End of Government Grant to ECF

Shortly after the Chancellor of the Exchequer concluded his Parliamentary statement on the Public Spending Review, a letter was received from Jonathan Hughes, Head of Sport, Department for Culture, Media and Sport as follows:

“2010 SPENDING REVIEW

“I write [...] to confirm that the Department’s grant to the English Chess Federation will cease from 31st March 2011.

“I appreciate that this is difficult news for you

and the organisation but, unfortunately, the Department has had to make a number of difficult choices in order to meet our contribution to the Government’s plan for fiscal consolidation over the next four years. One of these choices has been drastically to reduce DCMS’ central programme budget, out of which your current annual £45,000 grant is paid.

“We have taken this decision in order to maximise funding for our Non-Departmental Public Bodies and limit the impact on their programmes, whether this funding for Olympic and Paralympic sports in the run-up to London 2012, or funding for grassroots sport, for example.” ECF Chief Executive, Andrew Farthing, comments:

It was not a surprise when it was confirmed that the grant received from the Department for Culture, Media and Sport was going to cease after the current financial year. Disappointing, of course, but understandable.

The DCMS contacted me while George Osborne was on his feet in the House of Commons and gave me the news, along with some revealing comments about the context for the loss of our grant.

The DCMS’s budget is split into two broad categories: funding pots which are channelled through other bodies such as Sport England and its own central budget. The latter includes DCMS administration costs, which in the event had to be cut by nearly 50%. The central DCMS budget also included a £3 million budget which was used to fund sport and related activity not financed through Sport England, UK Sport and the like. The ECF’s grant came out of this £3 million budget.

As a result of the Spending Review, the £3 million pot was eliminated entirely, with one exception relating to a contractual obligation. (A similar pot for DCMS arts funding was also removed.)

The fate of the ECF grant was sealed in large part because chess is not officially recognised as a sport in England, in contrast to many other countries. We came close to achieving this several years ago, but a change in Sports Minister at the crucial moment derailed the change. That said, the funding programmes of UK Sport and Sport England were also reduced by about 30%, so it is quite possible that chess funding would not have survived the spending cuts even if it were recognised as a sport.

There is no point being bitter about the loss of the grant. On the contrary, I feel grateful for the

many years of funding which we did receive. Comments in some quarters of the press to the effect that the Government's support for chess has been "derisory" miss the point. No sport or pastime has an innate entitlement to State funding, and we have to be realistic about the low profile 'enjoyed' by chess in this country and the impact this had on the size of the grant received.

I also greatly appreciate the way in which the DCMS handled the process. Towards the end of 2009, the DCMS was giving the ECF warning signals that a phased reduction in the grant might have to happen, and we were given notice some weeks before the formal announcement that a full withdrawal of funding was almost certain. The effect of these warnings was to give the ECF Board time to plan for the change in its funding, and we've been able to prepare. The review of Management Services will save us £35,000 or so each year, and other cost-saving measures will mean that the impact of the loss of the grant will be relatively small.

This is not a comfortable position, of course, although it is alarmist to suggest – as one chess magazine has – that the loss of the grant "will leave the ECF facing an uncertain financial future." Thanks to the measures already taken, the ECF can more or less continue business as usual. The key point is that there is no scope for investment in new or expanded activities unless new funding is found.

The effects of our straitened circumstances will be felt from time to time. For example, with a reduced office staff, the impact of busy periods and absences due to holiday or illness will be greater. If occasionally we are unable to respond quite as quickly as we should like, please be understanding.

At a time like this, we could choose to bemoan our fate or face the challenge of the changed situation in a positive spirit.

The good news in all this is that our financial position is solid enough that we can keep the basics going using just the resources generated from English chess itself. This means that every penny of additional funding we can find in future – sponsorship, donations, grants, etc. – should be translated into new or expanded activities. The disappearance of the Government grant is no reason to stop looking for ways of developing English chess and trying to attract funding for it. A challenge, yes, but one which the Federation stands ready and willing to meet

- *Andrew Farthing*

Errors in AGM voting procedure

At the Annual General Meeting on 16 October 2010, elections took place for the ECF Board. In the case of the candidature of Malcolm Pein for one of the two Non-Executive Director positions, errors were made in the voting procedure.

(1) Prior to the vote, a member of the Governance Committee expressed the view that the executive directors should not be allowed to vote on the election of a Non-Executive Director.

Whilst this was a legitimate personal view (which individual executive directors may, of course, share), it is allowable within the rules of the Federation for directors to vote. This misunderstanding may have affected the votes cast.

(2) Prior to the vote, the same member of the Governance Committee expressed the view that "postal votes" should not be counted, because new points had been raised on the day which could not have been known to those not present at the meeting.

Under Company Law, postal votes as such are not allowed. However, anyone entitled to vote but unable to attend the meeting may grant a "directed proxy", which is an instruction (normally to the Chairman) to vote in a particular way. Those who give their proxy in this way accept that they will not have the opportunity to hear the discussion at the meeting itself.

As a result of section 324A of the Companies Act 2006, the Chairman should follow the instructions given via the directed proxies, regardless of what is said in the meeting discussion.

The view that "postal votes" should not be counted was understood to refer to directed proxies and, given its source in a member of the Governance Committee, was given the weight of a ruling. In fact, an official Governance ruling could only have been given by the holder of the Chairman of the Governance Committee's proxy at the meeting. This was not sought.

(3) Following a close hand vote, a "card vote" was requested. The rules allow for a more formal voting mechanism (referred to in the Articles as a "poll") to be used if requested by sufficient members or following a ruling by the Chairman. In this case, the Chairman made such a ruling. While a poll can

normally be taken in any manner the Chairman requires, in the specific case of an election the Procedural Bye Laws requires the poll to be conducted as a secret ballot. As the cards were counted in open meeting, the wrong procedure was adopted.

(4) During the card vote, the Chairman asked the tellers whether the directed proxies were to be included and was told that they should not. This was an error, and the votes should have been counted.

The result of the card vote was 49 in favour, 62 against. As a result, the candidate was not elected.

Had the directed proxies (22 for, 4 against) been counted, the totals would have been 71 in favour, 66 against.

Based on the result declared at the AGM, there was a vacancy for Non-Executive Director.

Under the ECF Articles, the authority to appoint someone to the role reverted to the Board.

In view of the serious errors committed, the incoming Chief Executive sought guidance from the Chairman of the Governance Committee.

Under normal circumstances, it would be inappropriate for the Board to appoint someone to its ranks who had failed to be elected at the AGM. Given the impact of the errors made, the advice given was that it would be acceptable for the Board to appoint Malcolm Pein, as a pragmatic means of correcting the effect of the procedural mistakes.

Before the Board formally considered the matter, the Chief Executive spoke with Malcolm Pein, apologised for the procedural errors and explained the situation. Malcolm Pein accepted the apology and advised the Chief Executive that, in view of the number of votes against cast at the AGM, he would not wish to be considered further for the role.

Following this, the Board met by teleconference on 1st November 2010 and appointed Jack Rudd to the vacant directorship.

The ECF apologises unreservedly for the errors made at the AGM and recognises that they must not be repeated. The situation was not helped by the need to replace, at extremely short notice, the scheduled Chairman of the meeting. The Governance Committee will be giving the matter further consideration to ensure that all necessary lessons are learned and appropriate guidance issued for future occasions.

- Andrew Farthing, Chief Executive

LAKE DISTRICT CHESS HOLIDAYS

A relaxed, informal 5-night holiday at this well-known Country House hotel, including a 7-round Swiss competition and tutorials on chess tactics. Suitable for the inexperienced as well as local club players

Rothay Manor, Ambleside

Tel: 015394 33605

E-mail: hotel@rothaymanor.co.uk

www.rothaymanor.co.uk/chess



FIDE appointments

The following are members of various FIDE bodies, following their appointment after the FIDE General Assembly -

David Jarrett

Chief Executive and Adviser for Chess Art and Exhibitions. He now lives in Athens.

Lawrence Cooper

Member of the Commission for Women's Chess

Rupert Jones

Secretary of the Development Commission (CACDEC). He represents Papua New Guinea but lives in England

Dr Jana Bellin

Chairman of the Medical Commission

Jon Speelman

Member of the Medical Commission

Stewart Reuben

Secretary of the Rules and Tournament Regulations Commission; Councillor for the Qualification Commission

The tournament took place in Halkidiki, Greece

The players:

Under 10: Mark Kenyon

Under 12: Tarun Malhotra, Ravi Haria, Anna Wang

Under 14: Felix Ynojosa, Maria Wang

Under 16: Yang-Fan Zhou

Under 18: Jasper Tambini, Robert Lyddiard, Sheila Dines

Coaches:

Lawrence Cooper (Head of Delegation)

Lorin D'Costa

Simon Williams

Parents:

Alan Kenyon, Dipak Malhotra, Sonal Haria, Hui Wang, Felix Ynojosa Senior, Chun-Ping Yang, Natalie & Ben Tambini (and Jasper's younger brother), Vidya Dines



Day 2

Coaching started early even though the pairings were not known until almost 1.00 pm. There was plenty to discuss between coach and player. By the time pairings were known, it was lunchtime. After lunch players had a short time to prepare against their opponents. We met at 2.45 for a team photo and then got on a coach journey to the playing venue.

The first day was chaotic with players settling down at their boards and getting used to the surroundings. The round started at 4.00 pm. For parents and coaches, there was a long wait mainly outside the playing hall. Laptops are not allowed in the area so it was impossible for anyone to get on with any work. As the hotel is so far away we have no choice but to sit and wait patiently for the players to finish.

Results today were promising with a team score of 5.5/10. After dinner the games were analysed with the players and their respective coaches.

Round One – Player Results and Pairings – OPEN

Board	Fed	White	FIDE	Result	Black	FIDE	Fed
34	ENG	Mark Kenyon	0	0 – 1	Timor Trubchaninov	1757	RUS
47	ENG	Ravi Haria	1940	½ – ½	John Doknjas	0	CAN
58	KEN	Srinjay Mukhopadhyay	0	0 – 1	Tarun Malhotra	1908	ENG
19	ENG	Felix Jose Ynojosa	2229	1 – 0	Elgin Meng Kah Lee	1918	MAS
21	LTU	Tadas Vanagas	2009	0 – 1	Yang-Fan Zhou	2320	ENG
35	ENG	Robert Lydiard	1988	0 – 1	Andras Csirik	2343	HUN
44	ENG	Jasper Tambini	1930	0 – 1	Giorgi Nikolashvili	2294	GEO

Round One – Player Results and Pairings – GIRLS

Board	Fed	White	FIDE	Result	Black	FIDE	Fed
45	ENG	Anna Wang	1763	1 – 0	Diana Omurbekoya	0	KGZ
11	ENG	Maria Wang	1732	1 – 0	Mila Zarkovic	1953	SRB
14	GRE	WIM Ekaterini Pavlidou	2191	1 – 0	Sheila Dines	1936	ENG

Day 3

Today started well with clear blue skies. Coaching continued after breakfast and everyone was preparing hard. We left for Round 2 at 3.00 p.m. A number of us waited outside the tournament hall despite the fact that there are no proper facilities for parents to wait – nothing to sit on apart from a small section of concrete wall. By evening it had become quite chilly and many games were still continuing until quite late. We waited patiently. The last player to finish, Maria, fought for almost 6 hours.

We only achieved 3.5/10 today so not a great day for the team but excellent results for Felix, Yang-Fan, Robert and Sheila.

Round Two – Player Results and Pairings – OPEN

Board	Fed	White	FIDE	Result	Black	FIDE	Fed
53	AUT	Florian Mesaros	1672	1 – 0	Mark Kenyon	0	ENG
11	FRA	Bilel Bellahcene	2152	1 – 0	Tarun Malhotra	1908	ENG
38	ARM	Gor Aleksanyan	0	1 – 0	Ravi Haria	1940	ENG
14	CHN	Chao Wei Chu	2075	0 – 1	Felix Ynojosa	2229	ENG
14	ENG	Yang-Fan Zhou	2320	1 – 0	Enrique Zavarce	2149	VEN
47	ENG	Jasper Tambini	1930	0 – 1	Juri Holvason	2163	EST
40	VIE	Lan Ngoc Tran	2227	½ – ½	Robert Lydiard	1988	ENG

Round Two – Player Results and Pairings – GIRLS

Board	Fed	White	FIDE	Result	Black	FIDE	Fed
5	EST	Anna Sagadijeva	1949	1 – 0	Anna Wang	1763	ENG
14	ESP	Elisabet Font Ruiz	1902	1 – 0	Maria Wang	1732	ENG
33	ENG	Sheila Dines	1936	1 – 0	Abuinja Easter	0	KEN

Day 4

We had a much better team score today with 6.5/10. Wins to report for Tarun, Ravi, Anna, Felix, Yang-Fan and Sheila. Jasper drew to a higher rated opponent and felt he had winning chances in the game. Everything is fine in Greece – except that the weather was a little chilly today.

Round Three – Player Results and Pairings – OPEN

Board	Fed	White	FIDE	Result	Black	FIDE	Fed
64	ENG	Mark Kenyon	0	0 – 1	Belurkar Nitish	1649	IND
40	ENG	Tarun Malhotra	1908	1 – 0	Fernando Chao Vale	1659	ESP
58	ENG	Ravi Haria	1940	1 – 0	Andres Juan Bayon Rolo	1610	ESP
7	ENG	Felix Ynojosa	2229	1 – 0	Atulya Shetty	2092	USA
7	ROU	Vlad-Ionut Stegariu	2143	0 – 1	Yang-Fan Zhou	2320	ENG
48	SLO	Matei Titan	2107	½ – ½	Jasper Tambini	1930	ENG
42	ENG	Robert Lydiard	1988	0 – 1	Sebastian Filippas	2191	GRE

Round Three – Player Results and Pairings – GIRLS

Board	Fed	White	FIDE	Result	Black	FIDE	Fed
32	ENG	Anna Wang	1763	1 - 0	Gabriela Ebeling	0	FIN
21	ENG	Maria Wang	1732	0 - 1	Bettina Gombos	1913	HUN
21	SVK	Monika Motycakova	2072	0 - 1	Sheila Dines	1936	ENG

Day 5

A team score of 4.5 with excellent wins for Mark, Felix, Robert and Maria and Ravi drew. Tomorrow Felix is on Board 1 with a fantastic score of 4/4.

Round Four - Player Results and Pairings – OPEN

Board	Fed	White	FIDE	Result	Black	FIDE	Fed
77	KOR	Hoseong Song	0	0 - 1	Mark Kenyon	0	ENG
17	ENG	Tarun Malhotra	1908	0 - 1	Cemil C Ali Marandi	2180	TUR
39	GER	Denis Mager	1678	½ - ½	Ravi Haria	1940	ENG
4	ROU	Stefan Tomici	2051	0 - 1	Felix Ynojosa	2229	ENG
1	FRA	Maxime Lagarde	2433	1 - 0	Yang-Fan Zhou	2320	ENG
49	ENG	Jasper Tambini	1930	0 - 1	Touko Setala	2026	FIN
52	RSA	Evasan Chettiar	0	0 - 1	Robert Lydiard	1988	ENG

Round Four – Player Results and Pairings – GIRLS

Board	Fed	White	FIDE	Result	Black	FIDE	Fed
10	RUS	Aleksandra Goryachkina	2057	1 - 0	Anna Wang	1763	ENG
42	TUN	Chaima Lahmar	0	0 - 1	Maria Wang	1732	ENG
15	ENG	Sheila Dines	1936	0 - 1	Lanita Stetsko	2138	BLR

Day Six

Today was our double round day, so a long day for all of us. Round 5 started at 9.00 am and Round 6 was at 4.00 pm. A major practical difficulty today was the fact that our hotel is 10 km away from the chess venue. We were supposed to return to our hotel after the first round but we were never sure how this would work, for players who ended up playing long games. Not everyone managed to get back – the coaches generally only go once every hour so this meant you needed to finish your game in less than 4 hours - to leave the chess venue by 1.00 pm to get back, eat lunch, wait for the pairings, prepare and return on the 3.15 coach for the next round. It was difficult to have any proper coaching slots today due to the double rounds, but the coaches were all brilliant and made themselves available and were completely willing to go through games at the venue and back at the hotel. Tomorrow (Monday) is a rest day but many are using the free day to go over games with coaches and prepare for Round 7 on Tuesday. We also plan to take some rest and relax in the hotel vicinity. No sightseeing is planned, as this may be too tiring. The players want to do their best in the remaining rounds.

Round Five – Team Score: 4.5/10

Round Six – Team Score: 4/10

Round Five - Player Results and Pairings – OPEN

Board	Fed	White	FIDE	Result	Black	FIDE	Fed
65	IRL	Jeffrey Alfred	0	0 - 1	Mark Kenyon	0	ENG
38	AZE	Chingiz Gasimov	0	0 - 1	Tarun Malhotra	1908	ENG
34	ENG	Ravi Haria	1940	1 - 0	Victor Artemov	0	RUS
1	LTU	Tomas Laurusas	2291	1 - 0	Felix Ynojosa	2229	ENG
11	ENG	Yang-Fan Zhou	2320	½ - ½	Chang Liu	2162	CHN
53	FIN	Riku Koskinen	1975	½ - ½	Jasper Tambini	1930	ENG
41	ENG	Robert Lydiard	1988	0 - 1	Nikola Potpara	2157	MNE

Round Five – Player Results and Pairings – GIRLS

Board	Fed	White	FIDE	Result	Black	FIDE	Fed
32	ENG	Anna Wang	1763	½ - ½	Olivia Meng	0	NED

24	CZE	Jana Marikova	1906	1 - 0	Maria Wang	1732	ENG
18	CRO	WFM Iyona Purgar	2091	1 - 0	Sheila Dines	1936	ENG

Day 7

Today (Monday) was a Rest Day for the players. Most of us spent the day in the hotel analysing games played so far and preparing for Round 7. We also found more relaxing things to do and everyone is looking forward to the next round. Most of us would prefer not having a double round day and just playing one round each day without a day off.

Day 8

Coaching continued, with serious preparation by players and coaches for Round 7. Excellent team score today of 6.5/10 with wins for Yang-Fan, Robert, Anna, Maria and Sheila and draws for Mark, Tarun and Felix.

Round Seven – Player Results and Pairings – OPEN

Board	Fed	White	FIDE	Result	Black	FIDE	Fed
58	BEL	Samuel Vandeputte	0	½ - ½	Mark Kenyon	0	ENG
13	GER	Jan-Christian Schroeder	2108	½ - ½	Tarun Malhotra	1908	ENG
24	USA	Christopher Wu	2138	1 - 0	Ravi Haria	1940	ENG
3	HUN	GM Richard Rapport	2523	½ - ½	Felix Ynojosa	2229	ENG
11	AUT	Lukas Handler	2225	0 - 1	Yang-Fan Zhou	2320	ENG
48	UKR	Maxim Borisenko	2198	1 - 0	Jasper Tambini	1930	ENG
51	ENG	Robert Lydiard	1988	1 - 0	Kaveesha Amarasena	1899	SRI

Round Seven – Player Results and Pairings – GIRLS

Board	Fed	White	FIDE	Result	Black	FIDE	Fed
28	ENG	Anna Wang	1763	1 - 0	Tatiana Loginova	0	RUS
41	AUT	Alexandra Kogler	0	0 - 1	Maria Wang	1732	ENG
31	RSA	Rebecca Selkirk	1545	0 - 1	Sheila Dines	1936	ENG

Day Nine

Wednesday was Round 8. We scored only 2.5/10 so not a good day for the team. A win for Yang-Fan and draws for Ravi, Jasper and Robert. It rained today and continued with an extremely stormy night with thunder, lightning, power cuts and strong winds!

Round Eight – Player Results and Pairings – OPEN

Board	Fed	White	FIDE	Result	Black	FIDE	Fed
56	ENG	Mark Kenyon	0	0 - 1	Artur Hognmrtsyan	0	ARM
16	ENG	Tarun Malhotra	1907	0 - 1	Yi Xu	2039	CHN
37	POL	Piotr Karpacz	1743	½ - ½	Ravi Haria	1940	ENG
6	ENG	Felix Ynojosa	2229	0 - 1	Vaibhav Suri	2418	IND
9	ENG	Yang-Fan Zhou	2320	1 - 0	Bjorn M Ochsner	2195	DEN
53	ENG	Jasper Tambini	1930	½ - ½	Bknazar U Esenbek	1985	KGZ
45	BEL	Michiel Larmuseau	2085	½ - ½	Robert Lydiard	1988	ENG

Round Eight – Player Results and Pairings – GIRLS

Board	Fed	White	FIDE	Result	Black	FIDE	Fed
24	MGL	Sarantuya Jargalmaa	0	1 - 0	Anna Wang	1763	ENG
35	ENG	Maria Wang	1732	0 - 1	Dagmara Szurek	1653	POL
22	ENG	Sheila Dines	1936	0 - 1	Spela Kolaric	2041	SLO

Day Ten

The stormy wet weather continued today. We learned later that one of the hotels was without any power all night and this was continuing during the day. This meant no laptop use – a serious situation for chess players and their coaches. We were lucky we did not have this problem.

Today we achieved a team score of 5.5/10 with wins for Tarun, Ravi, Maria and draws for Mark, Felix, Yang-Fan, Jasper and Anna

Round Nine – Player Results and Pairings – OPEN

Board	Fed	White	FIDE	Result	Black	FIDE	Fed
63	NZL	Yow-Jen W Yao	0	½ – ½	Mark Kenyon	0	ENG
29	BLR	Siarhei Shapiatsiuk	0	0 – 1	Tarun Malhotra	1908	ENG
35	ENG	Ravi Haria	1940	1 – 0	Fragkiskos V Tsiros	1764	GRE
16	TUR	Batuhan Dastan	2087	½ – ½	Felix Ynojosa	2229	ENG
5	ENG	Yang-Fan Zhou	2320	½ – ½	Robin Van Kampen	2430	NED
53	THA	Ragsit Khanan	1949	½ – ½	Jasper Tambini	1930	ENG
43	POR	A P F Vasques	2115	1 – 0	Robert Lydiard	1988	ENG

Round Nine – Player Results and Pairings – GIRLS

Board	Fed	White	FIDE	Result	Black	FIDE	Fed
28	KAZ	Dilara Albekova	0	½ – ½	Anna Wang	1763	ENG
40	EST	Maria Olmann	0	0 – 1	Maria Wang	1732	ENG
29	ENG	Sheila Dines	1936	0 – 1	amille De Seroux	2020	SUI

Day 11

Only 2 rounds left now. Team spirit is high and the players are all keen to get as many points as we can to finish this tournament. In Round 10 we achieved 6.5/10 with wins for Mark, Ravi, Felix, Robert and Sheila and draws for Yang-Fan, Jasper and Maria

Round Ten – Player Results and Pairings – OPEN

Board	Fed	White	FIDE	Result	Black	FIDE	Fed
60	ENG	Mark Kenyon	0	1 – 0	Thiago D Carstens	1838	BRA
18	IRI	Shahin Lorparizangeneh	2021	1 – 0	Tarun Malhotra	1908	ENG
29	SLO	Erno Molnar	1659	0 – 1	Ravi Haria	1940	ENG
15	ENG	Felix Ynojosa	2229	1 – 0	Roger Meng	2085	NED
6	AZE	IM Azad Abasov	2517	½ – ½	Yang-Fan Zhou	2320	ENG
51	ENG	Jasper Tambini	1930	½ – ½	Jacques Stander	0	RSA
48	ENG	Robert Lydiard	1988	1 – 0	Salaheddin Alnami	1692	LBA

Round Ten – Player Results and Pairings – GIRLS

Board	Fed	White	FIDE	Result	Black	FIDE	Fed
31	ENG	Anna Wang	1763	0 – 1	Anastasia Patrick	1802	INA
31	ENG	Maria Wang	1732	½ – ½	Cathileijne Sanders	1861	NED
30	EST	Enith Li Saag	0	0 – 1	Sheila Dines	1936	ENG

Day 12

Final round today. We are all ready to come home! Team score today is 5.5 with wins for Anna, Maria and Felix. A Bye for Jasper and draws for Ravi, Tarun and Yang-Fan. We will attend the closing ceremony this evening and leave tomorrow morning to travel back home

Round Eleven – Player Results and Pairings – OPEN

Board	Fed	White	FIDE	Result	Black	FIDE	Fed
51	MAC	Seak Hin leong	1657	1 – 0	Mark Kenyon	0	ENG
23	ENG	Tarun Malhotra	1908	½ – ½	Vvacheslav Tatekhin	2113	RSA
21	ENG	Ravi Haria	1940	½ – ½	Orri Striechman	1797	ISR
11	FRA	Guillaume Lamard	2186	0 – 1	Felix Ynojosa	2229	ENG
4	ENG	Yang-Fan Zhou	2320	0 – 1	IM Benjamin Bok	2453	NED
	ENG	Jasper Tambini	1930		BYE		
46	BIH	Srdjan Jefic	2152	½ – ½	Robert Lydiard	1988	ENG

Round Eleven – Player Results and Pairings – GIRLS

Board	Fed	White	FIDE	Result	Black	FIDE	Fed
37	ENG	Anna Wang	1763	1 – 0	Marte B Kyrkiebo	0	NOR
35	CAN	Rebecca Giblon	1763	0 – 1	Maria Wang	1732	ENG
27	ENG	Sheila Dines	1936	0 – 1	Minh Thuv Nguyen	1918	GER

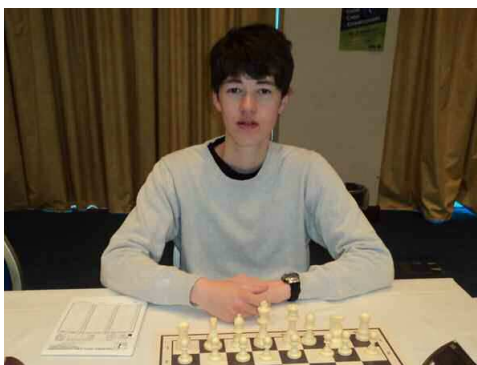
FINAL PLAYER SCORES

Mark Kenyon 4.5 | Tarun Malhotra 6 | Ravi Haria 6.5

Felix Ynojosa 7.5 | Yang-Fan 7 | Robert Lyddiard 4.5

Jasper Tambini 4 | Anna Wang 5.5 | Maria Wang 5.5 | Sheila Dines 4

Thanks to Sonal Haria for her regular reports and results



Welcome to a new regular feature, exclusive to Chess Moves. In this column, Chief Executive Andrew Farthing introduces a noteworthy book of interest to the average player.

I love books. Always have, always will. I'm not blind to the wonders of the computer age – an e-Reader accompanies whenever I'm away on my travels – but there is nothing quite like the tactile pleasure of a real book. This column invites you to set aside your databases and analysis engine and wallow, if only for a while, in the world of chess literature.

My first choice is a typically handsome production from Quality Chess, *Champions of the New Millennium* by Lubomir Ftacnik, Danny Kopec and Walter Browne. Published in 2009, the book presents brief profiles of 18 top players, mostly under 30 years old (with the notable exceptions of Anand, Ivanchuk and Kamsky).

The format is simple: a brief verbal introduction, summarising the player's career to date and including an attempt to categorise the player's style, followed by four deeply annotated games. Colour photographs embellish the text throughout – a rare but very welcome touch in chess books.

For many readers, the value of the books will depend upon the quality of the games and the accompanying notes. For an average player like me, the annotations are detailed, but not too detailed. Each game typically fills about five large, double column pages, and sequences of more than 3-4 moves without comment are rare once the game has moved beyond the opening. The authors avoid the lengthy forests of variations which tend to have me scurrying towards something more digestible, even if I admire the work that must have been involved. Crucially, the variations are accompanied by the sort of explanations which provide context and understanding for the average player.

In contrast to the annotated games, the player pro-

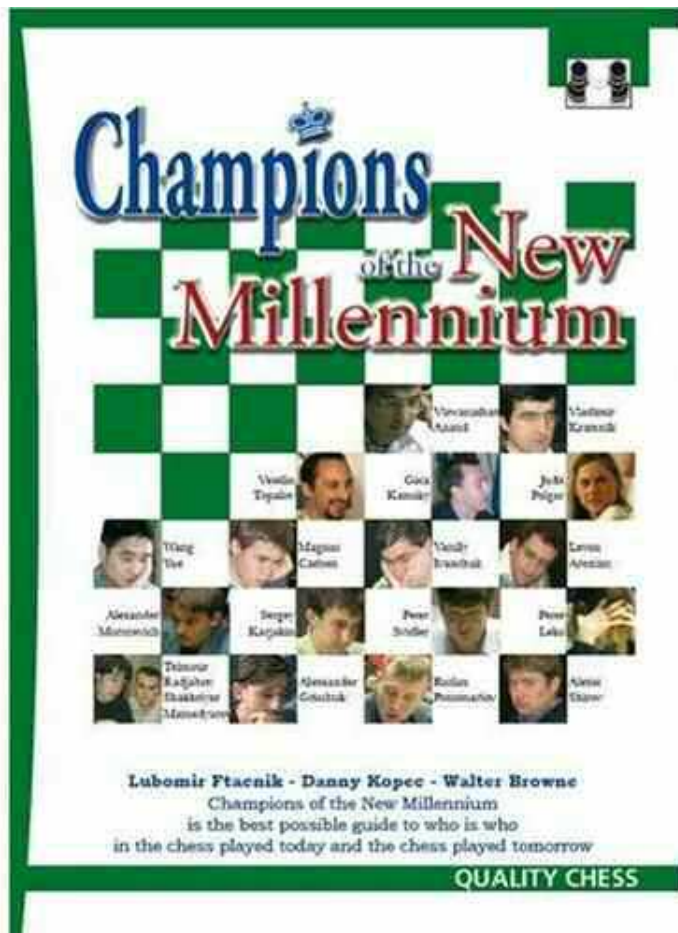
files are disappointing. Ignoring photographs, the verbal introductions are only 1-1½ pages long. It would be unfair to describe these sections as completely bland, but the shortage of space means that it is impossible to bring the player's personality to life. Only the brief sections on playing style genuinely stirred my interest. Where are the stories to bring these great players to life?

It's fascinating to contrast this with a much earlier book in the same genre. One of the co-authors of *Champions of the New Millennium* was also co-author (with Craig Pritchett) of one of my favourite chess books when I was at school, *Best Games of the Young Grandmasters* (Bell & Hyman, 1980; still available in a Dover reprint under the title, *Chess World Title Contenders and their Styles*).

The 1980 book covers only eight players, all considered potential contenders for Karpov's crown at the time: Miles, Timman, Browne, Andersson, Hübner, Ribli, Ljubojevic and (a late replacement for Mecking!) the teenage Garry Kasparov.

What's striking is the balance between text and games. Each player is covered in a little under 30 pages, just as in *Champions of the New Millennium*, but a third of these are devoted to the ups and downs of the player's career, their approach to the game and their personality. The games, by contrast, are explained mostly with words rather than variations, rarely using more than two pages for each of the 8-13 samples of the player's style.

I am positive that the 2009 book will be better for my chess, and yet it's the 1980 volume that I feel inclined to re-read (again). I came away from *Best Games of the Young Grandmasters* feeling that I knew the players as distinct personalities; by the close of *Champions of the New Millennium* I had a sense of



admiration for the players' skill, combined with the suspicion that too many of the grandmasters featured were virtually interchangeable in my mind.

The interesting question is whether this arises purely from the different approaches taken – Quality Chess are well known for deep analysis in their books, and computers have undoubtedly encouraged authors in this direction – or whether it reflects a difference in the players themselves.

Has the computer age ironed out individuality? Has the tendency for players to reach grandmaster strength at a much younger age led to a certain sameness? Or is it just that we are still waiting for the writers who will bring the new stars to life?

I honestly don't know (and I worry that merely posing the question means that I'm terminally behind the times).

But I do know that I miss the stories.

If you enjoyed this, why not check out ChEx, the Chief Executive's blog, at www.englishchess.org.uk/farthing?

International NEWS

e2e4 Brighton Congress 12-14th November

<http://www.e2e4.org.uk/brighton/open.htm>

<http://www.e2e4.org.uk/brighton/major.htm>

Congratulations to Grandmaster Keith Arkell who won the open with 4.5/5 but the real story was 11 year old Ravi Haria from Elstree who finished 2nd= with 4/5 including a draw with Keith in the last round. Ravi gained 28 rating points performing at 2468 and again showed the enormous promise he has. My thanks to Sean for staging these events and giving so many players the opportunity to play rated games. Equal second with Ravi were FMs Jovica Radovanovic and Dave Ledger as well as Roger Williamson. Sydney Jacob of Lewisham won the FIDE rated major with 4.5/5, ahead of Daniel Staples, Matthew Payne and Othman Musthapha who all scored 4

Bundesliga 12-14 November

<http://www.schachbundesliga.de/ligen/runden.php?menuid=423&topmenu=85&keepmenu=inactive>

<http://www.schachbundesliga.de/ligen/rundentabelle.php?menuid=417&topmenu=85&keepmenu=inactive>

<http://www.schachbundesliga.de/staticsite/staticsite.php?menuid=180&topmenu=85&keepmenu=inactive>

England had five grandmasters playing in the latest weekend; Michael Adams played for OSG Baden-Baden on board 2, Luke McShane was board 3 for Werder Bremen, David Howell was board 2 for SG Trier who also fielded Stewart Haslinger on board 5 and Stephen Gordon on 6. Michael scored 2.5/3 with wins against Tiviakov & Spoelmann whilst Luke scored 1/3. David scored 2.5/3 on his Bundesliga debut which included a win against French GM Laurent Fressinet rated 2718 with black! Stewart scored 1 out of 2 whilst Stephen just played the one game but by beating GM Zbynek Hracek rated

2633 with black made it a very worthwhile trip. After 5 rounds Michael's team OSG Baden-Baden lead the league with 9 match points out of 10 whilst Werder Bremen (Luke's team) are in second place despite their surprise defeat to SG Trier, mainly due to David and Stephen's impressive victories who have 6 points.

FSIM November Budapest HUN Sat 6th Nov 2010 - Wed 17th Nov 2010

<http://www.freeweb.hu/firstsaturday/1011/im.htm>

<http://www.chess-results.com/tnr40075.aspx?art=9&lan=1&fed=ENG&turdet=YES&flag=30&m=-1&wi=1000&snr=9>

Mark Lyell finished on 4 out of 11 in the IM norm tournament.

1st Open Brno CZE Sun 14th Nov 2010 - Sat 20th Nov 2010

<http://www.czechtour.net/brno-open/>

<http://chess-results.com/tnr40192.aspx?art=1&rd=9&lan=5&turdet=YES&flag=30&m=-1&wi=1000>

Ian Heppell finished on 5.5/9, Tim Spanton 4.5, Raymond Kearsley & David Guttridge 4 & Alan Collins 3.

4th Open Cesky Krumlov CZE Sun 21st Nov 2010 - Sat 27th Nov 2010

<http://www.czechtour.net/south-bohemia-open/>

<http://chess-results.com/tnr40515.aspx?art=1&rd=2&lan=1&turdet=YES&flag=30&m=-1&wi=1000>

David Spence is on 2/2.

ECF Live Games Calendar

http://www.englishchess.org.uk/?page_id=5052

I encourage players to send me details of events they or others are playing in abroad and I will do my best to include them in my round-up.

- Lawrence Cooper, Director of International Chess

Results ROUND-UP

36th Guernsey International Chess Festival

Played 17th to 23rd October 2010

Summary of Results

Open Tournament (58 players)

1 = Nick Pert (England) (takes trophy on tie-break); Tiger Hillarp-Persson (Sweden); Evgeny Sveshnikov (Latvia) 6/7

4 = Robert Bellin (England); Jan Havenaar (Netherlands); Wolfgang Mack (Germany); Ken Norman (England); Vladimir Sveshnikov (Latvia) 5

Ladies – Amy Hoare (England) 3

Veterans – David Casiot (England) 4½

Juniors – Peter A Williams (England) 4½

Rating – Mark Taylor (England); Graham Bolt (England); Ronnie Burton (England); Ton van Ingen (Netherlands); Desire Fassaert (Netherlands); Jude Lenier (England); Alan Gravett (Gibraltar)

Channel I – Fred Hamperl (Guernsey) 4

Best Game – Mark Taylor (England)

Br Ch Qual – Ken Norman (England) 5

Holiday Tournament (46 players)

1 Peter Sandijck (Netherlands) 5½/7

2 = Edwin Baart (Netherlands); Henk Haisma (Netherlands); Peter Hoogakker (Netherlands); Malcolm Roberts (England) 5

Ladies = Dinah Norman (England); Hazel Welch (England) 4

Veterans / Senior Veterans = John Glover (England); Ray Kearsley (England); Wim van Hoek (Netherlands); Peter Wood (England) 4½

Juniors – Nils Vonhoff (Germany) 4½

Rating – Ray Kearsley (England); Graham Kershaw (England); John Beadle (England); Colin Goman (Guernsey); Arthur de Silver (England); Hazel Welch (England); William Curry (England); Terry Harnden (Guernsey)
Channel I = Russell Finch (Guernsey); Colin Goman (Guernsey); Bogdan Nalichowski (Guernsey) 4

- David Sedgwick, 23rd October 2010

Uxbridge International, 24-28 October 2010

Premier

35 Players competed in the first e2e4 9 round

swiss held at De Vere Denham Grove, near Uxbridge. GM Aaron Summerscale and IM Jack Rudd shared first place, winning £625 each with IM Graeme Buckley 3rd and GM Keith Arkell 4th

Juniors James Holland and James Foster both performed excellently, winning the best over 2000 and best under 2000 performance rating prizes respectively.

James Holland also qualifies for the 2011 British Championships by virtue of his TPR in the first eight rounds, whilst Paul McIntyre and Adrian Ociepka both qualify after scoring 5.5/9 and then tying on tie break of sum of progressive scores.

GM Summerscale, Aaron – 7

IM Rudd, Jack – 7

IM Buckley, Graeme – 6.5

GM Arkell, Keith – 6

Holland, James – 5.5

Foster, James M – 5.5

Young Masters

10 players played in the Young Masters, which was kindly supported by the John Robinson trust and play was extremely competitive. Six of the ten players were separated by just half a point at the end, with Lateefah Messam-Sparkes and Einora Juciute (LTU) sharing first place and taking home £300 each.

Messam-Sparkes, Lateefah – 6.5

Juciute, Einora – 6.5

Foord, Dominic – 6

Archer-Lock, Adrian – 6

Nettleton, Charlie – 6

Dias, Theodore – 6

Richmond Rapidplay 92 – results

Open

1st Graeme Buckley 5/6

2nd Nazir Rizvi 4.5/6

3rd= Yang-Fan Zhou, Ian Snape, Simon McCullough and Peter Lalic 4/6 (latter two named also take U-190 grading prize)

Major (U170)

1st Raghu Kamath 5.5/6

2nd Matt Ward 5/6

3rd Zoran Dimitrijevic 4.5/6

U150 Grading Prize Richard Dulley 3.5/6

Intermediate (U135)

1st= Prashast Vir and Dipak Shah 5/6

3rd Karen Bayoma 4.5/6

U115 Grading Prize Mike Adams, Patrick Frawley and Shyam Kalairajah 4/6
Minor (U100)
1st Daniel Coleman 6/6
2nd= Tim Lattimore and Fred Coombes (also U80 Grading Prize) 4/6

11th Royal Beacon Seniors Congress

Royal Beacon Hotel, Exmouth - 8th/12th November 2010

Prizelist

Seniors Section:

1st= Andrew Footner (175) Dorchester 4 pts
Chris Carr (166) Ashted
John Dodgson (184) Sussex
Terry Stuttard (150e) Taunton
Phil Stimpson (178) Guildford

Grading Prizes:

(155 – 138):

Martyn Adams (151) Sidmouth 3½ pts
Peter Wood (146) Hastings 3½ pts.

(137 – 116)

Patrick Wojcik(132) Taunton 3 pts

(U-116)

Hazel Welch (115) Seaton 3 pts

'Junior Section':

1st Mike Yeo (195) Wessex 4 pts
2nd Simon Bartlett (162) Newquay 3½ pts

Grading prize (U-160):

Ronnie Burton (152) Weymouth 3 pts

Please note - reports and pictures are on keverelchess.com & game scores are on chess-devon.co.uk

29th Bolton Rapidplay results – from Mick Norris

The Bolton Rapidplay was held on 14th November 2010 at a new venue, the Bolton Ukrainian Club. 77 competitors competed for the £750 prize fund.

Mike Surtees (Bolton) dominated the Open section and had already won the first prize after 5 rounds, as his nearest rivals were on 3.5 pts, a clear 1.5pts adrift. He beat Martin Mitchell (Blackpool) in the last round to finish on

6pts/6.

In the Major section, James Walsh (Leyland) was a point clear on entering the final round, but lost to Richard Burton (Colwyn Bay). Both finished on 5pts/6 for joint first place. In the Knights section, Ben Scattergood was a point ahead of the field entering round 6. A draw with Paul Horman (Morecambe) ensured a first place on 5.5pts/6.

Open

1st Mike Surtees (Bolton) 6pts /6
2nd Galina Utyuzhnikova (Bolton) 4.5pts
3rd= Nathan Taylor (Bolton); Miroslav Gruca (Widnes); Phil Armstrong (Oldham) 4pts
£240 prize fund – 21 competitors

Major (165 & below)

1st= James Walsh (Leyland); Richard J Burton (Colwyn Bay) 5.pts
3rd= Mark Taylor (Rochdale); David Patrick (Courier) 4.5pts
U150 Grading Arnolds Koslovskis (Blackburn) 4.5pts
£240 prize fund – 27 competitors

Knights (135 and below)

1st Ben Scattergood (Holmes Chapel) 5.5pts/6
2nd= Paul Horman (Morecambe); Syd Cassidy (Austin Friars); Paul Holt (Radcliffe) 4.5pts
U120 Grading Mike Swift (Bolton); Harry Brooks (Great Lever) 4pts
U105 Grading Brian Slater (Bolton) 4pts
£270 prize fund – 29 competitors

ECF Office telephone numbers - an update

Since moving to our smaller premises, we have discontinued the second line we used to rent from BT which carried the number - 01424 775999 - so this number is no longer valid

The main office telephone remains the same on 01424 775222, and if you wish to send us a fax (as the third-party debt collection agencies so often do) the number is 01424 775904, as before

The English Chess Federation is pleased to announce further developments in their Certificate of Merit

PROUDLY SPONSORED BY



and another great offer

The Certificate of Merit (COM) is centred on a number of online tests. These enable students to measure their progress and to earn certificates and badges.

It is only possible to take the tests entirely online. Payments for the credits can be made online, or by post. Examinees can practice as many times as they wish before they take the test. All questions are multiple-choice. The mark then comes through automatically. The result will then immediately be available and the certificate will then be issued online there and then. The button badge for the particular level will be sent out by the ECF Office shortly afterwards.

Please see the shop on the ECF website <http://www.englishchess.org.uk/> for details of purchase of the full package or individual items.

New!

Each credit costs £6 or £150 for 30. A new development is that, once a student has paid for a credit, he can then take the test as many times as he wishes, until he passes.

New!

Another new development is that a student will be able to track each question he got wrong and find out the correct answer.

There is also a package available of many goodies. Again, for details, go to www.certificateofmerit.org.uk

For further information contact the ECF Office:

01424 775 222 / com@englishchess.org.uk / www.certificateofmerit.org.uk

Another offer!

The LONDON CHESS CLASSIC takes place 8 to 15 December at the Olympia Conference Centre, London W14 8UX. Admission to this major event is FREE to people under 16 accompanied by a paying adult. This is going to be the strongest chess tournament ever held in Britain; including the participation of the World Champion Viswanathan Anand and our own four leading players. There are also special events throughout the day, including demonstration of the Certificate of Merit. For further details: www.londonchessclassic.com

All UK schools are invited to attend FREE chess coaching classes given by some of Britain's leading trainers every weekday morning during the tournament. Please see www.chessinschools.co.uk or call Chess in Schools and Communities on 07868 028491

It's Good to Talk ...

by Andrew Farthing

Ever since I announced that I was standing for the position of Chief Executive, people have asked me two questions more than any other: "Are you out of mind?" and "What does the Chief Executive do?"

The answer to the first remains to be seen, but I'd like to spend a little time considering the second. I'll skip over the usual supplementary ("Do you get paid?") because the answer ("No") tends to drag the conversation back to the first question.

The official description of the Chief Executive's role is set out in the ECF Regulations and includes such elements as setting strategy, taking a leading role in external affairs and overseeing the Federation's office function. Most of what a good Chief Executive does can be summarised in the phrase, "getting things done." This includes following through on Board decisions, coordinating the activities of the various Directors and being accountable to Council and the Board for delivery of the ECF's strategy and business plans.

There is one vital area missing from the official description: Communication. Without it, "getting things done" starts to look impossible:

- The wrong things are done, because the views of affected parties are not sufficiently understood;
- Teamwork suffers, which means that things are not done well;
- Even when the right things are done (and done well), they are not understood or appreciated because they have not been properly communicated.

In the business world, it is accepted that success derives not just from doing the right things but doing them well. Execution is the name of the game, and effective communication at every stage is essential to successful execution.

*

So, the motto is: It's good to talk. In the last few weeks, you may have noticed some changes:

- I've set up a Chief Executive's blog – ChEx – on the ECF website, which allows me a little more space to explain recent developments

and comment on policy;

- The link has been re-established to the (entirely independent) English Chess Forum, where chess players can comment on any aspect of the game and where I try to answer any questions relating to the ECF. Several other directors do likewise.

- I've issued a standing invitation to contact me, whether by letter, e-mail, phone or in person at chess events, with questions, ideas or comments.

So far, the response has been heartening. At the recent Scarborough weekend congress, I was delighted to be asked to say a few words to the players at the start of the penultimate round, and I received nothing but positive and friendly reactions from those who came up to say hello. (Admittedly, I was worried at first when the Chief Controller slipped me a note during my third round game. Fortunately, the message was an invitation to introduce myself, not the warning that I feared: "For heaven's sake, play better moves – you're making the tournament look bad!")

It's still early days. I received one comment which gave me pause: "I was - until this year - secretary of a chess club since 2000 and have not once been contacted by the ECF. A secretary of another chess club has said the same to me recently. I realise you expect leagues and congresses to represent constituent clubs, but the odd bit of direct club feedback might help gauge how effective leagues and congresses are at that. And where decisions are binary, maybe it'd be useful to know if chess players were 75% or 100% behind the casting of their league vote; or only 51%:49%."

It's an excellent point and a challenge worth meeting. The Board and I need to hear the views of chess players and organisers across the country. There are all sorts of ways of sharing your ideas and opinions with the ECF, including letters or e-mails to Chess Moves. Please – make use of them!

We'll do all that we can to communicate better, but it has to be two-way. For, while I know that it's good to talk, it's also crucial that we listen. I'd like the chance to prove that we do.

4NCL Rapidplay 9th-10th October - a report by Lawrence Cooper



The third 4NCL team and second individual rapidplay took place at Harben House De Vere venue in Newport Pagnell last weekend. The team event had 27 teams and the individual had 74 players. The organisers generously agreed to allow any players playing in the team event to have free entry to the individual. The time limit was 10 minutes plus an increment of 5 seconds a move.

The top seeds in the team event were Pride & Prejudice comprising GMs Mark Hebden, Tony Kosten and Aaron Summerscale as well as IM Thomas Rendle. Second seeds were NACCPO

1 comprising GMs Gawain Jones and Keith Arkell, IM Lawrence Cooper and one of England's most promising juniors, Brandon Clarke. After that there appeared plenty of talented teams including the Youth team of Yang-Fan Zhou, Callum Kilpatrick, Sam Franklin and Subin Sen as well as strong Barbican, Bristol and Cambridge University teams. Metropolitan Police also included GM William Watson in their team.

Congratulations to Barbican 1 who won the team event and defeated both their nearest rivals NACCPO 1 and Pride & Prejudice. Over the years, Barbican have often defeated teams rated well above them and this event proved no exception. Despite the late withdrawal of GM Jonathan Parker the team of John Cox, Matthew Piper, Peter Poobalasingam and Rafe Martyn finished a game point clear of the field despite trailing NACCPO by a game point going into the last round. Whilst Barbican had a convincing 4-0 victory NACCPO struggled to a 2-2 draw with Bristol and even this score flattered them. It was just enough for NACCPO to gain second place ahead of Pride & Prejudice though.



For those wondering what NACCPO stands for it is The National Alliance of Childhood Cancer Parent Organisations - <http://www.naccpo.org.uk/>

My association with them stems back to when I worked at RAF Stafford and one of my work colleagues had a son who became ill with leukaemia. Although he made a full recovery, I have kept links to the charity and although my fund raising days are virtually over now I still keep in contact and use the charity name where possible to give them some free publicity and hopefully increase their public profile (hence this shameless plug!).

The highest individual scores in the team event were Matthew Piper of Barbican with an amazing 8.5/9, Victor Jones of RSI with 7.5/9 and the following players all scored 7, William Watson who represented Metropolitan Police, Keith Arkell & myself from NACCPO 1, Sue Maroroa from NACCPO's U175 team, Aaron Summerscale of Pride & Prejudice and Yang-Fan Zhou of the Youth team.

Yang-Fan Zhou who also finished 3rd= in the individual event



Team event:

1st	Barbican	26.5
2nd	NACCPO	25.5
3rd	Pride & Prejudice	25.0
Best Junior	Youth	19.5
Best U175	AMCA	19.5

You can see the full team cross-table here:

<http://www.bcfservices.org.uk/livechess/4ncl/1011/rapid/index.htm#teampos>

The individual event appeared to be between the three GMs Gawain Jones, Mark Hebden and Keith Arkell. As was the case in the team event, though, results didn't run according to grading. Mark Hebden raced to 5/5 whilst Keith lost ground with a defeat to David Buckley in round 3 and Gawain started with 1.5/3. Mark then lost ground losing to Thomas Rendle in round 6 and Craig Pritchett in round 7. Thomas's outright lead was short-lived though as defeat to Keith Arkell in round 7 left several players in the joint lead on 6/7. Keith defeated Craig whilst Tom defeated Yang-Fan to leave Keith & Tom joint leaders on 7/8 with Keith downfloating to Alexei Slavin with black and Tom facing James Sherwin with white. While early draw offers from the leaders were rejected Tom went on to win comfortably to reach 8 whilst Keith had a hard fought draw ending in perpetual leaving Keith on 7.5 and Alexei on 7 along with Mark Hebden and Yang-Fan Zhou.

Individual event:

1st	Thomas Rendle	8.0/9
2nd	Keith Arkell	7.5/9
3rd	Mark Hebden, Yang-Fan Zhou, Alexei Slavin	7.0/9

Best Junior Yang-Fan Zhou 7.0/9

Best U175 Hubert Mossong 5.0/9

You can see the full individual cross-table here:

http://www.bcfservices.org.uk/livechess/4ncl/1011/rapid/indiv_crosstable.htm

Whilst I think the event has the potential to become very popular and successful it is clear that improvements can be made in future years. For example, having the matches split over two rooms with initially pairings only available in one room was a problem, but fortunately Claire Summerscale was kind enough to remedy this. I should point out that Claire Summerscale, Mike Truran, the captains and the arbiters did



everything they could to limit the disruption and I am confident that the event will become an established and successful part of the tournament calendar, which I look forward to playing in again in the future.

I should also mention that the live coverage of the top two matches was a welcome innovation and allowed those not at the venue to witness all the blunders, thrills and spills as they took place live. The venue and playing conditions were also good with several internet terminals available outside the room where the top three matches were accommodated.

Matthew Piper (left) who scored an amazing 8.5/9 faces GM William Watson

Historical Knight

On Thu 23 Sept, a special Lewis Chessmen evening was held at The British Museum by Aisling Lavery in conjunction with Nevil Chan's Drunken Knights Chess Club who 'haunt' the famous Plough Pub in Museum St, London W1 - which is very conveniently situated a 100m stumble from the British Museum main entrance. The evening consisted of a 9-round 5-minute chess tournament (with a Lewis Chessmen set as 1st Prize), together with Stuart Conquest playing a rolling simultaneous against volunteering museum visitors.

The 5-min tournament was won by Richard Black, and Stuart took no prisoners from his challengers, many of whom were museum visitors from South East Asia. The evening was declared an outstanding success due in no small part to the organising skills of Nevil. This may well become a regular event as the British Museum seeks to attract more visitors through its "History of The World in 100 Objects" Programme



Can you spot the fraudulent Lewis Chessman in this photo?

NEWSFLASH - British Rapidplay 2010

David Howell has won the British Rapidplay Open 10.5/11, and was unbeaten all weekend
Runners-Up – Mark Hebden, Richard Palliser/Aaron Summerscale on 8/11
P. Weller won the Major 9/11, D. Knowles won the Intermediate 9/11 and K. Pattni won the Minor 10/11

Obituary

Larry died on 15 November 2010 after complications arising from surgery. He was 78. The US grandmaster was best known in this country as a writer and player. He certainly contributed towards 'My 60 Memorable Games' by Bobby Fischer. He is credited with having writ-



ten the introductions to the games but may well have done much more. In relatively recent years he played a

number of times in the Staunton Memorial Tournaments in London.

One fond memory; Bobby adjourned against Tigran Petrosian in the USSR v Rest of the World match in 1970 in Belgrade. We went to his room. 'Shall we look at the position?', Larry asked. 'No,' Bobby replied. 'If I win then they'll say Larry won the game.' We looked at each other. Then Larry, David Levy and I went off to the casino and won a little at blackjack. It was hardly surprising; Larry was a professional and I wasn't too bad.

- Stewart Reuben



St Helens Chess Club ECF Small Club of the Year

Here's the club with their certificate - well done to all involved!

Book REVIEWS - Gary Lane

60 Years in the Same Room - A History of the Paignton Chess Congress

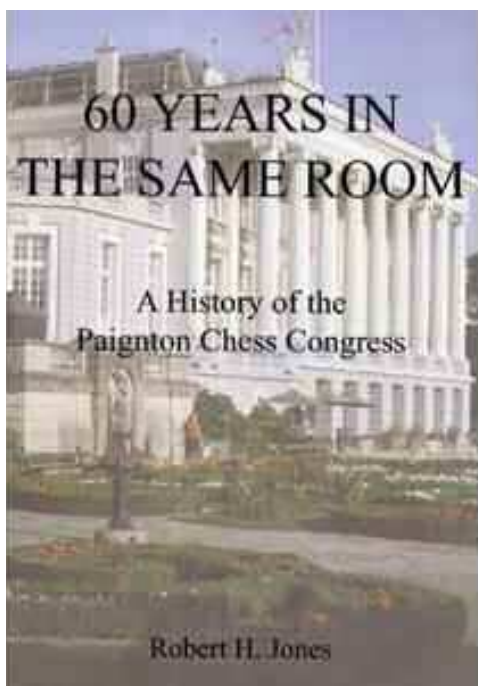
by Robert H Jones

Published by Keverel Chess Books @ £16.00

The Paignton congress recently celebrated its sixtieth anniversary and to mark the event a book was commissioned by the organisers. The result is a

sweeping history of British chess that fascinates page after page for enthusiasts who will recognise old friends as well as star names such as competitors Barden, Golombek, Clarke and in more

recent times Adams, Arkell and Norwood. A number of grandmaster tournaments were also held there at the same time so ex-world champion Euwe is one of many remarkable figures to make an appearance. It stands out as a tournament even now because it is held in the ballroom of a grand mansion built by the Singer sewing machine family. It takes place in September for six days and is known to preserve the old traditions. After all a few years ago I wondered aloud why it still had adjournments in this era of computers but I was solemnly told by a committee member that one of the competitors had booked the hotel evening meal in advance so it seemed a shame to change things. I am somewhat biased having often played there but with eighty photos it is a great way to remember the good old days and it is worth the money just to see a quaint photo of John Nunn in 1974 sporting big, wavy hair, while bizarrely accepting a toy model car from the sponsors. While in the future Gawain Jones may still live to regret wearing his Australian Crocodile Dundee hat. Bob Jones who received



acclaim for co-writing The English Morphy deserves credit for his meticulous research and human interest by expanding about the lives of numerous players. He has harvested tournament reports from old copies of Chess or British Chess Magazine so every year receives a mention with enough results to please any club player who has competed and wants to see their name in print. A great way to see how British chess has changed over the years while also enjoying sixty annotated games.

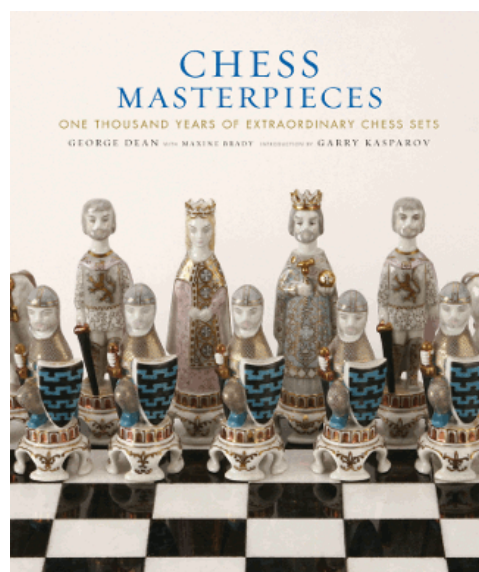
My book of the year.

One Thousand Years of Extraordinary Chess Sets

by George Dean with Maxine Brady

Published by Harry N. Abrams, Inc @ £39.95

A classic coffee table book that would grace the home of any serious chess enthusiast. The hardcover reveals 272 pages bursting with photos of chess sets collected by George Dean tracing how they evolved and the huge variety on offer.



It details how Islamic countries adopted abstract shapes to represent the pieces and also reveals how contemporary artists such as Max Ernst and Damian Hirst have

stamped their own identity on chess. An extremely impressive way to appreciate the aura of extraordinary chess sets. One can see how splendid artistic endeavours have used chess to through the ages to show off their skills. The ultimate collector's item.

Coffee House Chess Tactics

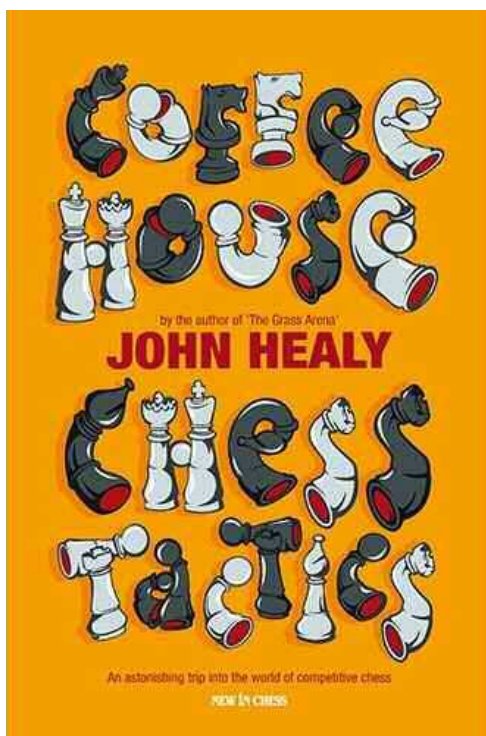
by John Healy

Published by New in Chess @ £14.95

This entertaining book marks a significant event for the author who is able to celebrate his love of the game by producing a small collection of puzzles and games to illustrate his career. There

might be many people wondering why such a prestigious company like New In Chess has published this when as far as I know the author has never reached the 150 (1800) level but there lies an extraordinary tale. In 1988 Healy's book the *The Grass Arena* made a big impact on the literary world with a story of his rough life leading to being a vagrant and alcoholic but then finding redemption through learning chess in prison. The BBC filmed the story in 1992 and it should have been a happy ending. Still, for some reason the book went out of print but recently a fellow chess player paid for it be reprinted and once again chess fever took hold and publishers came calling. It is now considered a Penguin Modern Classic with high sales.

This explains why the Coffeehouse book starts with a short chess story that covers 19 pages to appeal to



his literary fans. The problem for serious chess players is that there are not enough puzzles or games. The lack of top level opponents is made up for example by a friendly game versus Bob Wade while

simultaneous encounters against Bent Larsen and Rafael Vaganian are also included. There is often one puzzle per page, which just looks like an effort to squeeze the book out to 135 pages. Still, such a remarkable man deserves attention and there is lots of inspiration for attacking players and has enough insightful comments to make it of interest to anyone. A must for admirers of *The Grass Arena*.

Batsford COMPETITION



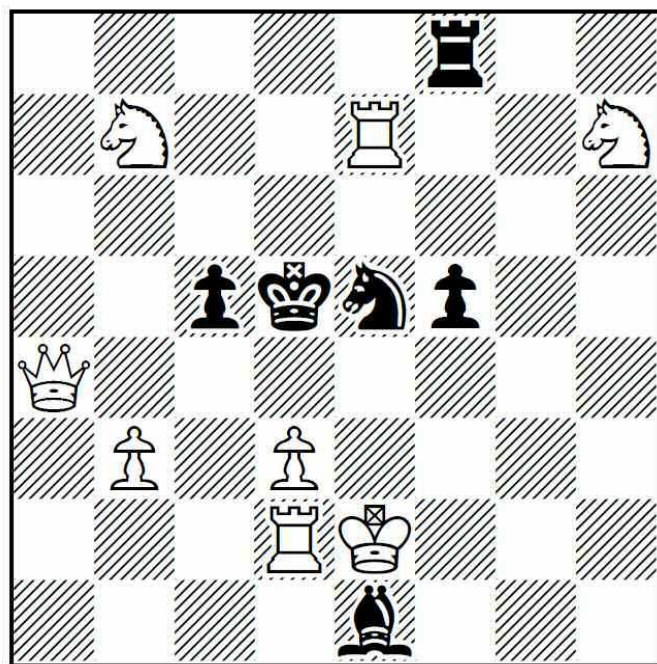
B T BATSFORD

Congratulations to the September/October Winner!

MJ Dow from Leeds

The correct answer was - Rd6

Here's the next problem ...



Grand Prix Leader Boards

The GRAND PRIX 2010/11

Players with their details in red are counting the maximum number of events. Note that recent results will still be in the pipeline.

Leader Boards – October 28th 2010

Junior Prix

Pos/Name	Club/Area	Pts
1 Murphy, Conor	E Kent Jr Congresses	477
2 Hoare, Amy B	Sussex Junior	453
3 Jones, Steven A	Grappenhall	451
4 Brown, Martin	Grappenhall	442
5 Kalairajah, Shyam	Kent Jr Congresses	410
6 Nettleton, Charlie B	Hayes (Middlesex.)	405
7 Wadsworth, Matthew J	Maidenhead	400
8 Burke, Mitchell R	Three C's	399
9 Foster, Chantelle L	Cowley	371
10 Rabbitte, Michael J	Heywood	367
11 Zhang, Zheming	Jesmond	365
12 Gupta, Arul	Kent Jr Congresses	359
13 Foster, James M	Cowley	357
14 Zhou, Yang-Fan	Richmond Juniors	354
14 McPhillips, Joseph	Bolton	354

Graded Prix (160-179)

Pos/Name	Club/Area	Pts
1 Bryant, Richard BE	Oswestry	548
2 Jackson, Paul G	Coulsdon CF	472
3 Clegg, Robert	Huddersfield	468
4 Keogh, Edward	Preston	450
5 Patrick, David A	Courier Halifax	377
6 Hayward, Alan	Streatham	334
7 Garnett, John S	Elmwood	326
8 Ropp, Wiatt	Stratford	270
9 Wells, Jonathan C	North Norfolk	268
10 Cutmore, Martin J	Wood Green	266
11 Archer-Lock, Christopher J	Berkshire *	254
12 Bunn, Matthew	Snodland	253
13 Staples, Daniel J	Battersea	245
14 Davies, Peter L	Cardiff	240
14 Heaton, Paul	Writtle	240

Graded Prix (140-159)

Pos/Name	Club/Area	Pts
1 O'Gorman, Brendan	DHSS	577
2 Desmedt, Richard E	Netherton	564
3 Hartley, Dean M	Amber Valley	496
4 Dean, Robert A	Pudsey	458
5 Pride, Stephen C	Cambridge City	425
6 Connor, Michael I	Great Lever	419
7 Papier, Alan	Bristol & Clifton	407
8 Wiggins, Andrew S	Greenlands	389
9 Bishop, Geoffrey L	Chislehurst	355
10 Gartside, Carl	High Peak	355
11 Ribbands, Patrick C	Cambridge City	351
12 Porter, Sam J	Trinity School	339
13 Clegg, Chris RA	Kingston	332
14 Sandcock, E Barry	Buckinghamshire *	328
15 McCarthy, Damian	Padgate	309

Graded Prix (120-139)

Pos/Name	Club/Area	Pts
1 Foley, Phil T	Upminster	499
2 Allen, Timothy S	Battersea	476
3 Stone, Mark R	Petts Wd & Orpington	468
4 Crouch, Timothy J	Kings Head	446
5 Howes, David J	Coulsdon CF	426
6 Crockett, Stephen J	Birmingham *	414
7 Gardiner, Colin J	Falmouth	412
8 Horman, Paul A	Morecambe	407
9 Davis, John G	Ashted	385
10 Norman, Nigel	Charlton	323
11 Turvey-Cross, Syringa Lyn	Colwyn Bay	304
12 De Santos, Andrew R	Preston	287
13 McKeon, John E	Milton Keynes	276
14 Curtis, Howard CP	Coulsdon CF	275
15 Norman, Dinah M	Berkshire CA	262

Graded Prix (U120)

Pos/Name	Club/Area	Pts
1 Fraser, Alan R	Beckenh'm & Bromley	474
2 Waddington, James	Bolton	445
3 Billett, Stephen J	Portsmouth	387
4 Winter, Malcolm J	Shoeburyness *	349
5 Brent, Derek	Urmston	336
6 Hall, James W	East Grinstead	335
7 Miles, Barry S	South Norwood	333
8 Wadsworth, James	MF Maidenhead	327
9 Kernot, Adrian C	East Grinstead	305
10 Robertson, Alan B	Isle of Man	278
11 Smith, Mark J	Scotland	268
12 Brace, Peter	Spondon	264
13 Everitt, David	St Francis & Haywards Heath	254
14 Calderbank, Stuart	Blackpool *	252
15 Smith, Roger N	Ipswich	230



For more information visit -
<http://www.londonchessclassic.com/>

Calendar of EVENTS

LEGEND –

- # - British Championships qualifying tournament
- @ - FIDE rated
- * - ECF Grand Prix
- ~ - ECF graded event

For a comprehensive calendar visit the ECF website - www.englishchess.org.uk

~* 26-28 Nov **Preston Congress**, University Of Central Lancashire Contact: Malcolm Peacock Email - malcolm@mpeacock.demon.co.uk Website: <http://chess.popmalc.org.uk/?q=node/9> Organisers Address - 10 Cromwell Road, Penwortham, Preston, PR19AT

26-28 Nov **34th Annual Kilkenny Chess Congress**, at venues around Kilkenny Contact: Alan Dooley Tel: (056) 7763721

~* 27 Nov **Ealing Rapidplay**, St Thomas The Apostle Parish Hall, 182 Boston Road, Ealing W7 3HL Contact: Sainbayar Tserendorj Email: londonrapidplay@yahoo.co.uk Website: www.londonrapidplay.co.uk

~* 27 Nov **Warwickshire Junior Championship**, Arden School, Station Road, Knowle, Solihull, Warwickshire B93 0PT MAP Contact: Alex Holowczak Email: alexholowczak@gmail.com Organiser's address: 48 St. Brades Close, Oldbury, Worcestershire B69 1NX Under 14-21 sections rapidplay graded Website: <http://www.warwickshirechess.org.uk>

~*# 27-28 Nov **59th Herts Chess Congress**, Ramada Hatfield Hotel (The Comet Hotel), Comet Way / St Albans Road West, Hatfield, Herts AL10 9RH Contact: Jeremy Fraser-Mitchell Tel: 01727 848883 Email: hcacongress@ntlworld.com Website: www.hertschess.com

28 Nov **Woodbridge Junior Open**, Woodbridge School, Burkitt Road, Woodbridge, Suffolk IP12 4JH Contact: Adam Hunt Email: ahunt@woodbridge.suffolk.sch.uk - London Junior Chess Championship Qualifying event Entry form: <http://www.woodbridgechess.com/content/WJO10entryformdoc.pdf>

28 Nov **Wiltshire Team Rapidplay Tournament**, Nationwide Head Office Contact: Tony Ransom Email - chesssalsa@aol.com Organisers Address: 4 Pound Farm Close, Hilperton, Trowbridge, Wiltshire BA14 7PZ Teams of 3 players (you may choose to have a squad of more players and swap people in and out of different rounds). 30 minutes per player per game. The entry fee is £12 per team (CASH ONLY, NO CHEQUES). All the entry fees will be returned as prizes, and there will also be a trophy for the winning team. Entries (including players' names) to be received by Tuesday 23rd November 2010. Please send to: Tony Ransom, 4 Pound Farm Close, Hilperton, Trowbridge, Wiltshire, BA14 7PZ or email to chesssalsa@aol.com. If you would like to play but haven't got a team, please contact Tony, as you won't be able to turn up on the day and play

2 Dec **First Thursday Hendon Blitz**, Golders Green Parish Church NW11 7QG Contact: Adam Raoof Email: adamraoof@gmail.com Website: <http://www.hendonchessclub.com> Entry form: <http://www.hendonchessclub.com>

~ 3-5 Dec **1st Idle Chess Congress**, Idle Working Men's Club, High Street, Idle, Bradford BD10 8NB MAP Contact: Andrew Wainwright Email: idlechessclub@yahoo.co.uk, andrew.wainwright@echostar.com Website: www.idlechessclub.org.uk

~*# 3-5 Dec **6th Bristol Winter Congress**, Filton Sports & Leisure Centre, Elm Park, Filton, Bristol BS34 7PS Contact: Graham Mill-Wilson Email: Tugmw@blueyonder.co.uk Three sections - Open, Major (U160), Minor (U130) Entry form from: www.chessit.co.uk

~ 4 Dec **Golders Green Rapidplay**, Golders Green Parish Church Hall, West Heath Drive, Golders Green, London NW11 7QG Contact: Adam Raoof Website: <http://goldersgreenchess.blogspot.com/>

5 Dec 16th **Bury Rapidplay**, Elton Vale Sports Club, Bury BL8 2RZ MAP Contact Anthony Email: burychess2010@btinternet.com Tel: 01617642243 (before 10pm please) Website: www.burychessclub.co.uk

8-14 Dec **The London Chess Classic 2010 Blitz Tournaments**, Olympia, London Contact: Malcolm Pein Email: info@chess.co.uk Telephone: 020 7388 2404 Website: <http://www.londonchessclassic.com/> Tickets from: <http://www.ukgameshop.com>

8-15 Dec The London Chess Classic 2010 FIDE-Rated OPEN, Olympia, London Contact: Malcolm Pein
Email: info@chess.co.uk Telephone: 020 7388 2404 Website: <http://www.londonchessclassic.com/>
Tickets from: <http://www.ukgameshops.com>

~* **11 Dec Harrow Junior Rapidplay**, University of Westminster, Harrow Campus HA1 3TP Contact: Marc Shaw Email: 2010@ljcc.co.uk Under 12 Only - a qualifier for the LJCC Under 12 events starting 28th December Entry form: <http://www.ljcc.co.uk/Harrow%20Junior%202010.pdf> Website: www.ljcc.co.uk

*~ **11 Dec London Rapid Play**, Cardinal Hinsley Math & Computing College, Harlesden Road, Willesden, London NW10 3RN39 Contact: Sainbayer Email: londonrapidplay@yahoo.co.uk Tel: 07525 031843
Website / entry form: www.londonrapidplay.co.uk - This tournament has a special junior ONLY section with 4 age groups and grade restriction called "Get my first Grade" will aim to bring more junior new players. There is also U130, U165 & Open section for stronger players

~* **11-12 Dec London Junior Chess Championships**, University of Westminster, Harrow Campus HA1 3TP Contact: Marc Shaw Email: 2010@ljcc.co.uk Telephone: 0794 781 3303 - Under 10 and Under 14 Major Championship and Minor events, qualification required for Under 10 events - Entry form: <http://www.ljcc.co.uk/ljccentryform10.pdf> Website: www.ljcc.co.uk - online entries accepted

11-12 Dec The London Chess Classic 2010 Weekend Classic, Olympia, London Contact: Malcolm Pein
Email: info@chess.co.uk Telephone: 020 7388 2404 Website: <http://www.londonchessclassic.com/>
Tickets from: <http://www.ukgameshops.com>

12 Dec The London Chess Classic 2010 Rapidplay, Olympia, London Contact: Malcolm Pein Email: info@chess.co.uk Telephone: 020 7388 2404 Website: <http://www.londonchessclassic.com/> Tickets from: <http://www.ukgameshops.com>

~ **12 Dec Sheffield Junior Congress**, Ecclesall Church of England Junior School, Ringinglow Road, Sheffield S11 7PQ Contact: John Hipshon Email: jr.hipshon@ntlworld.com - part of the Yorkshire Junior Grand Prix - Entry form: <http://www.leedsjuniorchess.org.uk> Website: <http://www.yorkshirejuniorchess.co.uk>

~ **18 Dec CCF Rapidplay English Chess Challenge / Champion of Champions Event**, 84-90 Chipstead Valley Road, Coulsdon, Surrey CR5 3BA Contact: Scott Freeman Email: chess@ccfworld.com Tel: 020 8645 0302 Fax: 020 8645 0412 Website: <http://www.ccfworld.com/Chess/>

~* **18 Dec National Prep Schools Rapidplay**, Aldro School, Lombard Street, Shackleford, Godalming GU8 6AS Tel: 01483 810266

27-28 Dec Cruse Charity Christmas Chess Congress, Quality Hotel, Birmingham Road, Dudley, West Midlands DY1 4RN Contact: Jamie Davis Telephone: 0121 5444510

@#~* **28 Dec-5 Jan 86th Hastings International Chess Congress**, Horntye Park Sports Centre, Hastings, East Sussex Contact: Pam Thomas Email: pae123@aol.com | Entry form - <http://www.hastingschess.org.uk/entry.htm>

@~* **28-30 Dec London Junior Chess Championships**, University of Westminster, Harrow Campus HA1 3TP Contact: Marc Shaw Email: 2010@ljcc.co.uk Under 8 Championship (Wed+Thurs only) Under 12/16, 21 Major Championships, Under 12 Minor - Qualification required for Under 12 events - On-Line entries accepted Entry form: <http://www.ljcc.co.uk/ljccentryform10.pdf> Website: www.ljcc.co.uk

~*~* **28-30 Dec London Christmas Congress**, University of Westminster, Harrow Campus HA1 3TP Contact: Marc Shaw Email: 2010@ljcc.co.uk Website: www.ljcc.co.uk Entry form: www.ljcc.co.uk/London%20Christmas%20Congress%202010.pdf - FIDE rated Open, Major U165, Minor U125 - online entries accepted

2011

#@~* **1-2 Jan Hastings Weekend Congress**, Horntye Park Sports Centre, Hastings, East Sussex Contact: Pam Thomas Email: pae123@aol.com | Entry form - <http://www.hastingschess.org.uk/entry.htm>

~ **2 Jan Sussex Junior Hastings Rapidplay**, St. Mary Star of the Sea School, Magdalen Road, St. Leonards on Sea, East Sussex TN37 6EU Contact: Paula Payne Email: entrymanager@sussexjuniorchess.org
Organiser's address: 222 King Edward Avenue, Worthing, West Sussex BN14 8DL Entry form: <http://www.sussexjuniorchess.org/Forms/GP4HastingsJan.pdf> Website: <http://www.sussexjuniorchess.org/index.htm> 6 rounds rapidplay in 4 sections; U11 Minor & Major, U18 Minor & Major. Open to all aged under 18 on 31st August 2010

#* 7-9 Jan **Fulprint 24th York Congress**, Energise (formerly Oakland Sports Centre), Cornlands Road, Acomb, York YO24 3DX Contact: Richard Hardy Tel: 01904 764963

~ 7-9 Jan **South Wales Winter Congress**, Penarth Conservative Club Contact: Ian Eustis Email: kevin.staveley@btinternet.com Website: www.welshchessunion.org.uk Organiser's address: Ty Ni, Tir Bach Farm Drive, Pontardawe, Swansea SA8 3ET

~ 8-9 Jan **11th Wrekin Chess Congress**, Madeley Court Sports Centre, Madeley, Telford, Shropshire Contact: Richard Thompson Tel: 07850 375826 Entry forms to: Richard Thompson, 22 Marsh Road, Edgmond, Newport, Shropshire TF10 8EP

~ 8-9 Jan **CCF New Year LP Congress** [inc. FIDE Open], 84-90 Chipstead Valley Road, Coulsdon, Surrey CR5 3BA Contact: Scott Freeman Email: chess@ccfworld.com Tel: 020 8645 0302 Fax: 020 8645 0412 Website: <http://www.ccfworld.com/Chess/>

~* 15 Jan **London Rapid Play**, Cardinal Hinsley Mathematics & Computing College, Harlesden Road, Willesden, London NW10 3RN Contact: Sainbayar Email: londonrapidplay@yahoo.co.uk - Junior ('2Get My First Grade' with 5 sections - U8, U10, U12, U14 & U18 with trophy), U130, U165 & open sections with prizes Website: www.londonrapidplay.co.uk

15-16 Jan **4NCL Rounds 3 and 4**, Barcelo Hotel, Hinckley Island (Divisions 1, 2 and 3) Contact: Mike Truran Tel: 01993 708645

15-16 Jan **4NCL Northern League**, De Vere Wychwood Park (nr Crewe) Contact: Mike Truran Tel: 01993 708645

~ 23 Jan **CCF Junior Rapidplay ECC Qualifier** (Wimbledon), 84-90 Chipstead Valley Road, Coulsdon, Surrey CR5 3BA Contact: Scott Freeman Email: chess@ccfworld.com Tel: 020 8645 0302 Fax: 020 8645 0412 Website: <http://www.ccfworld.com/Chess/>

~* 23 Jan **Richmond Rapidplay 93**, The White House, The Avenue, Hampton, TW12 3RN Contact: James Coleman Website: <http://www.surreyrapidchess.org> Email: rapidplay@aol.com

#~ 23 Jan **22nd Nottingham Rapidplay**, Nottingham High School, Waveney Mount, Nottingham NG7 4ED Contact: Robert Richmond Email: robrchmnd@aol.com Organiser's address: 25 Wilford Lane, West Bridgford, Nottingham, NG2 7QZ Sections - Open, U160, U135, U110

#@~* 24 Jan-3 Feb **Tradewise Gibraltar Chess Festival**, Website: www.gibraltarchesscongress.com Email: conf.banq@caletahotel.gi

29 Jan **Jorvik Rapidplay**, Wheatlands Lodge Hotel, York - from 10.30- 5.30, one day rapidplay of 6 rounds Entry fee £10 - Entry via Peter Cloudsdale Tel 019040-767177 Accommodation available at hotel - £39 single or £34 shared

*~ 29-30 Jan **15th Dudley Congress - Spectrum Chess**, Quality Hotel, Dudley Contact: Norman Went Email: spectrumchess@hotmail.com Website: www.spectrumchess.com - 5 round Swiss congress with 3 tournament sections

5-6 Feb **Junior 4NCL Weekend 2**, Barcelo Hotel, Oxford Contact: Mike Truran Tel: 01993 708645

~* 5-6 Feb **34th Kidlington Chess Tournament**, Exeter Hall, Oxford Road, Kidlington, Oxon OX5 1AB Contact: Gerard O'Reilly Email: gerard@fianchetto.co.uk Tel: 01865-727419 Organiser's address: 24, Donnington Bridge Road, Oxford OX4 4AX Website: <http://home.btconnect.com/OCA/> Entry form: <http://home.btconnect.com/OCA/ef2011.pdf>

* 6 Feb **Stockport Rapidplay**, The Guildhall, 169 Wellington Road South, Stockport SK1 3UA Contact: Peter Taylor Tel: 0161 4400733 Email: pht@rover12.wanadoo.co.uk

~ 12 Feb **Sussex Junior Eastbourne Rapidplay**, Bishop Bell School, Priory Rd, Eastbourne, East Sussex BN23 7EJ Contact: Paula Payne Email: entrymanager@sussexjuniorchess.org - 6 rounds rapidplay in 4 sections; U11 Minor & Major, U18 Minor & Major. Open to all aged under 18 on 31st August 2010 | Entry form - <http://www.sussexjuniorchess.org/Forms/GP5EastbourneFeb.pdf>

*~# 12-13 Feb **Warwickshire Open Chess Congress**, Arden School, Station Road, Knowle, Solihull, West Midlands B93 0PT Contact: John Pakenham Email: jpakenham@btinternet.com Website: www.warwickshirechess.org.uk Entry fee bursary for British Championships qualifier. Club team prize. Also incorporating the closed Warwickshire Championship