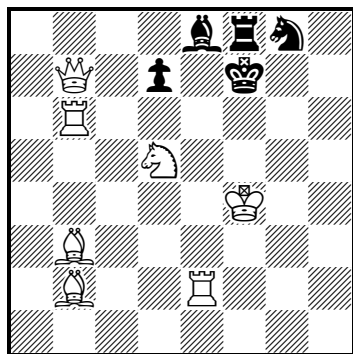


Do have a go at solving the following 'Chess Problems' They are not positions from games: they are composed (constructed) for enjoyment. White plays up the board in each position and you only need to give White's first move.

'#1' means 'White to play and mate in one move.'

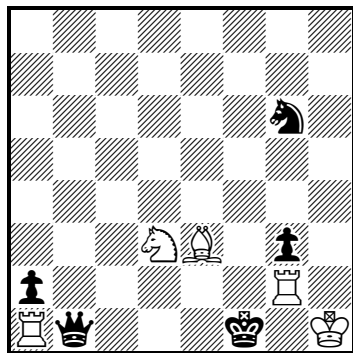
'#2' means 'White to play and mate in two moves.'

1)



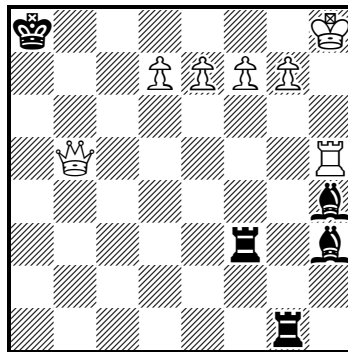
#1

2)



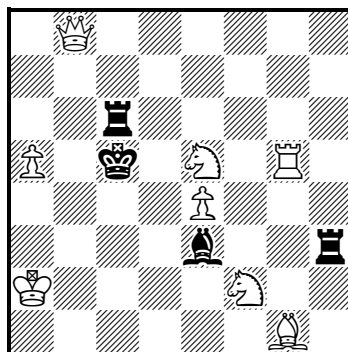
#2

3)



#2

4)



#2

For more information about chess problems, please visit:

<http://www.theproblemist.org>