

IMPERIAL COLLEGE JUNIOR CHESS SOLVING TOURNEY, 2018

NAME: _____

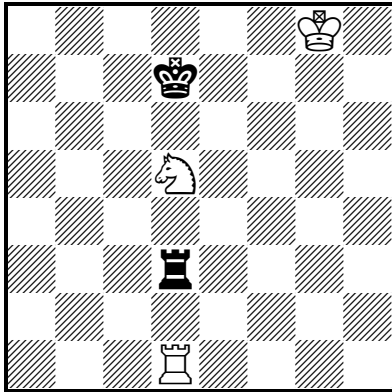
SCHOOL: _____

AGE: _____

ROUND 4: 3 Helpmates in 2 moves – **In these problems Black plays first and co-operates with White to enable White to mate Black on White's second move.** Give all moves for each side in each solution. In each solution the move numbering and sequence is: 1.B W 2.B W#

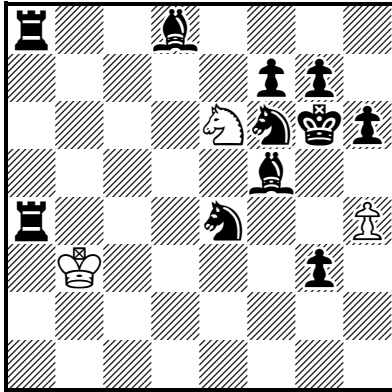
TIME ALLOWED: 30 minutes.

4.1)



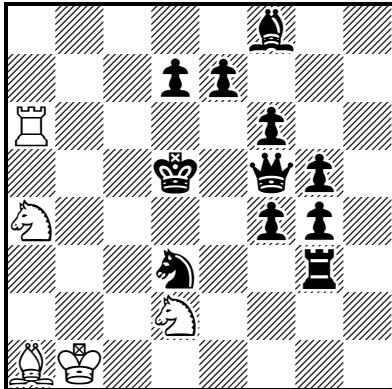
H#2 (2 sols) (3 + 2)

4.2)



H#2 (2 sols) (3 + 11)

4.3)



H#2 (2 sols) (5 + 11)