

# IMPERIAL COLLEGE JUNIOR CHESS SOLVING TOURNNEY, 2018

NAME: \_\_\_\_\_

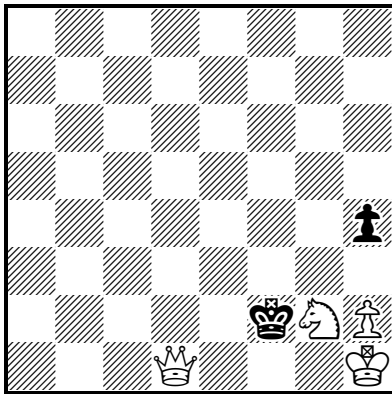
SCHOOL: \_\_\_\_\_

AGE: \_\_\_\_\_

ROUND 3: 3 Selfmates in 2 moves –**White is to play and force Black to mate White in 2 moves.** Give White's first move and all variations after that up to White's second move. There is no need to give the move(s) by which Black mates White. Inferior black moves that lead to the mate of White before Black's second move need not be given. **Remember that both sides are trying to avoid mating the other!**

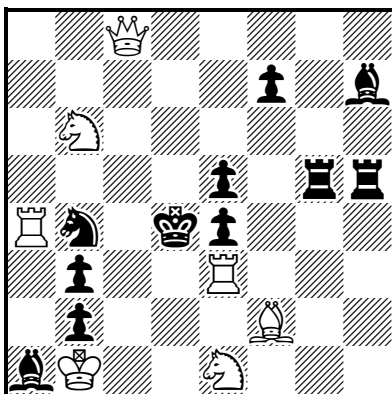
TIME ALLOWED: 30 minutes.

3.1)



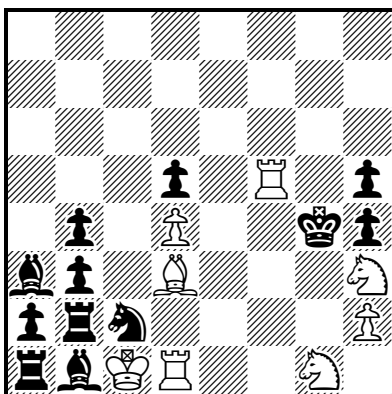
S#2 (4 + 2)

3.2)



S#2 (7 + 11)

3.3)



S#2 (8 + 12)