

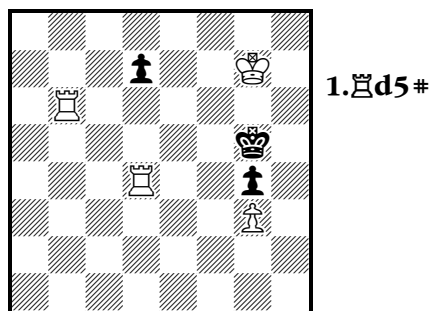
Do have a go at solving the following 'Chess Problems' They are not positions from games: they are composed (constructed) for enjoyment. White plays up the board in each position and you only need to give White's first move.

'#1' means 'White to play and mate in one move.'

'#2' means 'White to play and mate in two moves.'

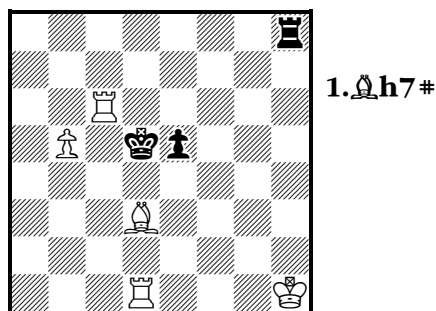
'S#2' means 'White to play and force Black to mate White on his second move. The normal rules of chess apply, but both sides are aiming to avoid mating the other!

1) Colin Vaughan (v. BDS)
Checkmate, 1978



#1

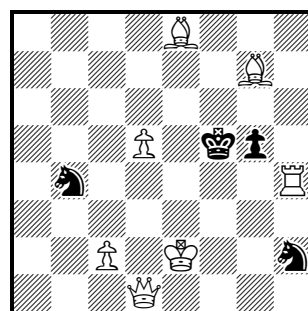
2) Colin Vaughan (v. BDS)
Checkmate, 1978



#1

3) Alain C White

Les Tours de Force sur l'Echiquier, 1906

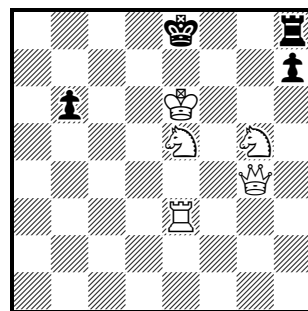


#2

- 1. Qe3!** ○
- | | |
|--------------|------------|
| 1... Qf1+ | 2. ♖xf1# |
| 1... Qg4+ | 2. ♖xg4# |
| 1... Qxc2+ | 2. ♖xc2# |
| 1... Qxd5+ | 2. ♖xd5# |
| 1... Qf3 | 2. ♖xf3# |
| 1... Qb else | 2. ♖(x)d3# |
| 1... gxh4 | 2. ♖h5# |
| 1... g4 | 2. ♖h5# |

4) Alain C White

Good Companions Meredith Ty., 1918

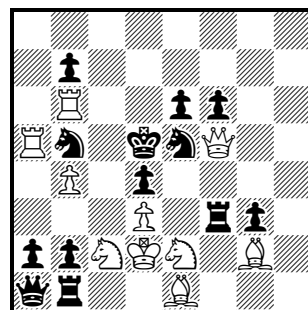


#2

- 1. Qf6!** (2. ♖c8#)
- | | |
|-----------|----------|
| 1... ♖f8+ | 2. Qef7# |
| 1... 0-0+ | 2. Qgf7# |
| 1... Qd8 | 2. ♖d7# |
| (1... Qf8 | 2. ♖c8#) |

5) Gligor Denkovski

Novi Temi, 1971



S#2

- 1. Qh1!** ○
- | | | |
|-----------|----------|--------|
| 1... ♖xe1 | 2. Qc3+ | dx c3# |
| 1... ♖c1 | 2. Qe3+ | dx e3# |
| 1... g2 | 2. ♖xf3+ | Qxf3# |
| 1... exf5 | 2. Qxf3+ | Qxf3# |

For more information about chess problems and about the British Chess Problem Society, please visit:

<http://www.theproblemist.org>