

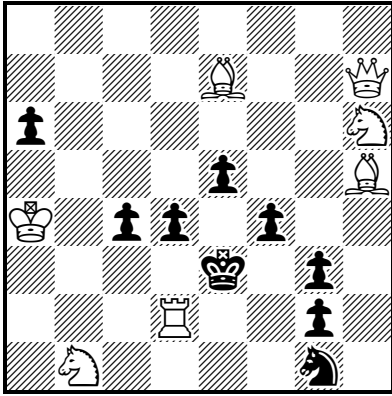
TEAM CHESS PROBLEM SOLVING NATIONAL FINAL

IMPERIAL COLLEGE, London, 3rd April 2019

Name:

Introduction – Three assorted problems, a directmate, a selfmate and a helpmate.

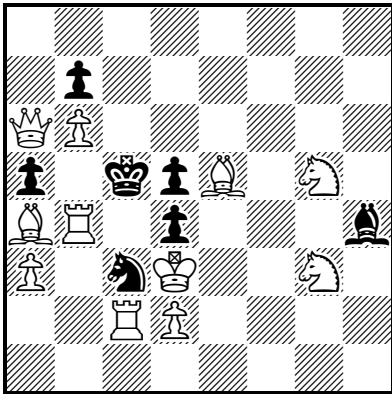
1)



#2 (7 + 9)

White to play and mate in two moves. Give White's first move only.

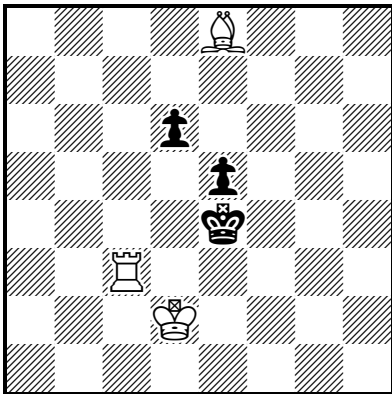
2)



S#2 (11 + 7)

White to play and force Black to mate him in two moves. Give White's first move and all moves, both black and white, up to White's second move.

3)



H#2 (3 + 3)

3 solutions

Black to play and help White to mate him in two moves. Give all moves in each solution. The move sequence is 1.B W 2.B W#. Note that there are three solutions to this problem.