

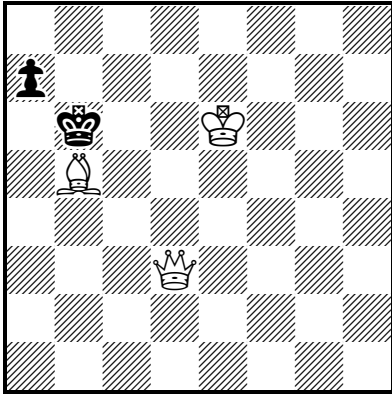
# TEAM CHESS PROBLEM SOLVING NATIONAL FINAL

## IMPERIAL COLLEGE, London, 3<sup>rd</sup> April 2019

Team name: .....

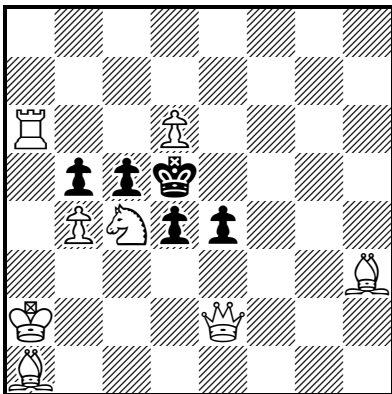
Round 1 - White to play and mate in two moves. Give White's first move only.

1.1)



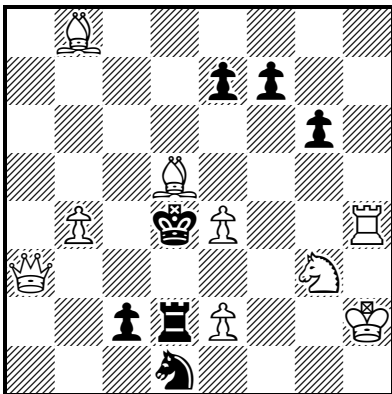
#2 (3 + 2)

1.2)



#2 (8 + 5)

1.3)



#2 (9 + 7)