

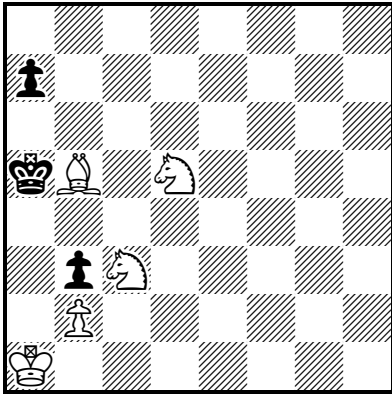
# TEAM CHESS PROBLEM SOLVING NATIONAL FINAL

## IMPERIAL COLLEGE, London, 3<sup>rd</sup> April 2019

Team name: .....

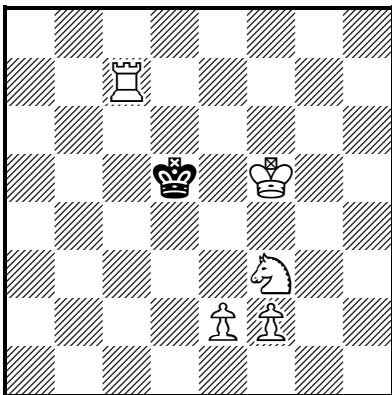
Round 2 - White to play and mate in three moves. Give White's first move and all moves, both black and white, up to White's second move in each variation.

2.1)



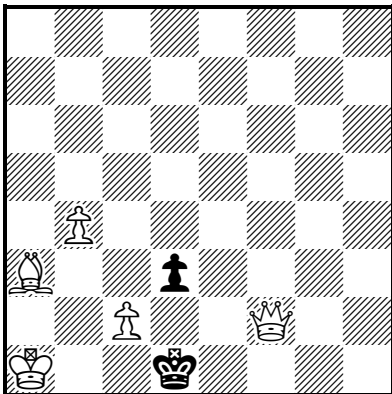
#3 (5 + 3)

2.2)



#3 (5 + 1)

2.3



#3 (5 + 2)