

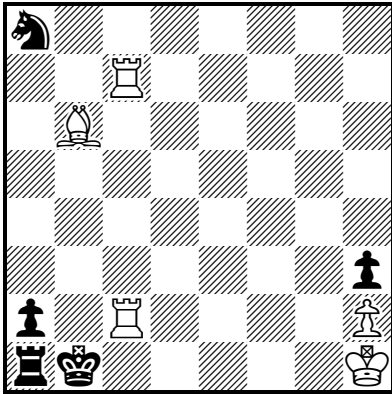
TEAM CHESS PROBLEM SOLVING NATIONAL FINAL

IMPERIAL COLLEGE, London, 3rd April 2019

Team name:

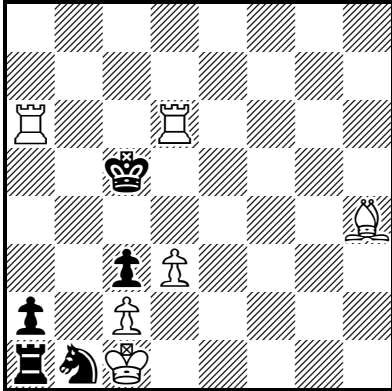
Round 3 - White to play and force Black to mate him in two moves. Give White's first move and all moves, both black and white, up to White's second move.

3.1)



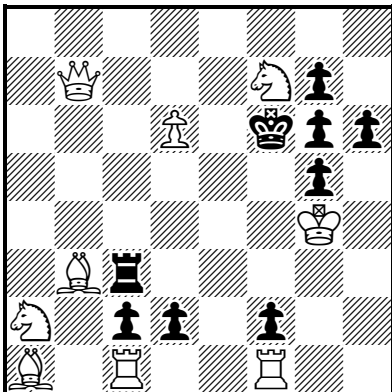
S#2 (5 + 5)

3.2)



S#2 (6 + 5)

3.3)



S#2 (9 + 9)