

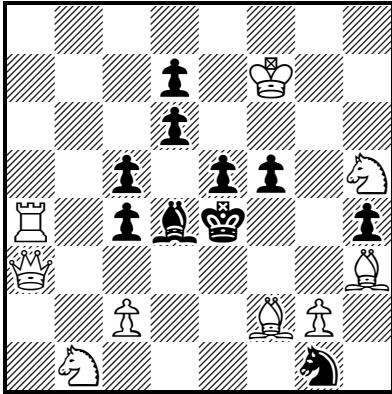
TEAM CHESS PROBLEM SOLVING NATIONAL FINAL

IMPERIAL COLLEGE, London, 3rd April 2019

Team name:

Round 5 – One mate in two, one selfmate in two and one helpmate in two.

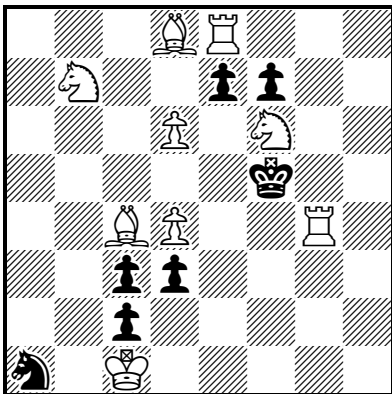
5.1)



White to play and mate in two moves. Give White's first move only.

#2 (9 + 10)

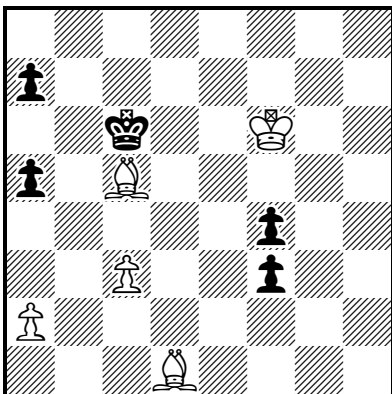
5.2)



White to play and force Black to mate him in two moves. Give White's first move and all moves, both black and white, up to White's second move.

S#2 (9 + 7)

5.3)



Black to play and help White to mate him in two moves. Give all moves in each solution. The move sequence is 1.B W 2.B W#. Note that there are four solutions to this problem.

H#2 (5 + 5)

4 solutions