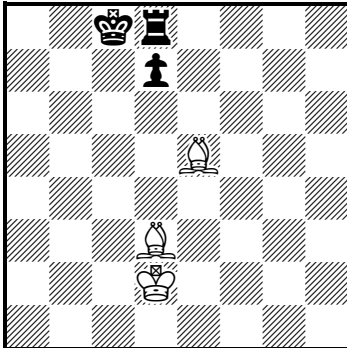


TEAM PROBLEM SOLVING 2019, ROUND 1

Name.....

School.....

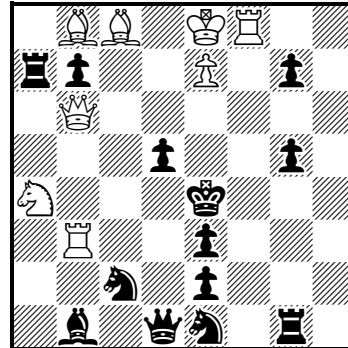
1)



White to play and mate in one move. Give that move.

Mate in 1 (3 + 3)

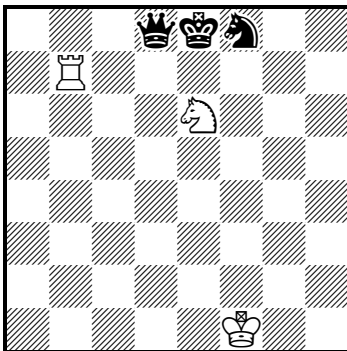
4)



White to play and mate in two moves. Give White's first move only.

Mate in 2 (8 + 13)

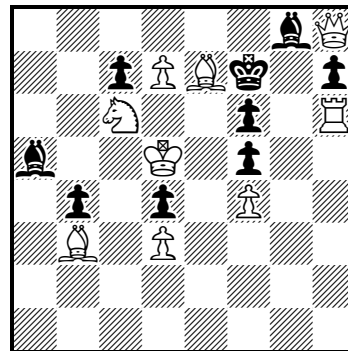
2)



White to play and mate in one move. Give that move.

Mate in 1 (3 + 3)

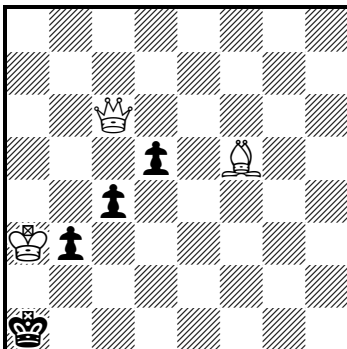
5)



White to play and force Black to mate him on his second move. Give White's first move and all variations up to White's second move.

Selfmate in 2 (9 + 9)

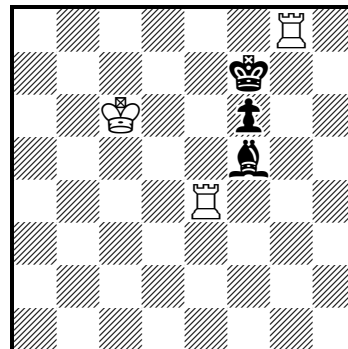
3)



White to play and mate in two moves. Give White's first move only.

Mate in 2 (3 + 4)

6)



Black to play and help White to mate him on his second move. Give all moves of each solution. The move order is:
1.B W 2.B W

Helpmate in 2
2 solutions (3 + 3)