



ENGLISH CHESS FEDERATION

CHESS SKILLS

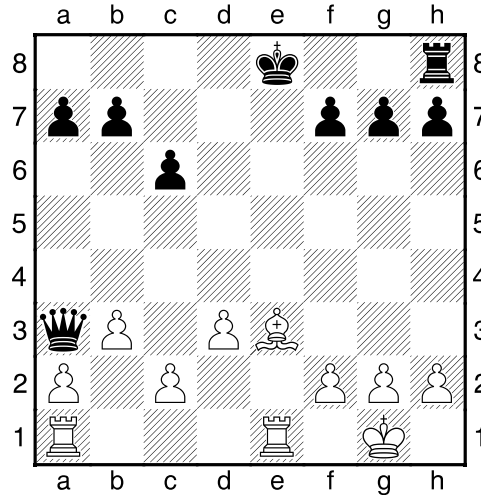
Discovered Attacks

Adapted from the Chess Skills leaflets,
produced for the British Chess Federation by JE Littlewood and RA Furness.

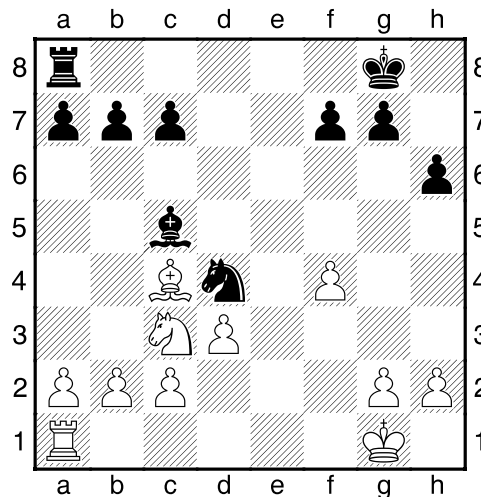
Developed from the Tactics for Juniors sheets
originally prepared by RG Wade, R Bott and S Morrison.

Discovered Attacks

A discovered check is a good example of a discovered attack. It occurs when a piece is moved and uncovers check from another piece.



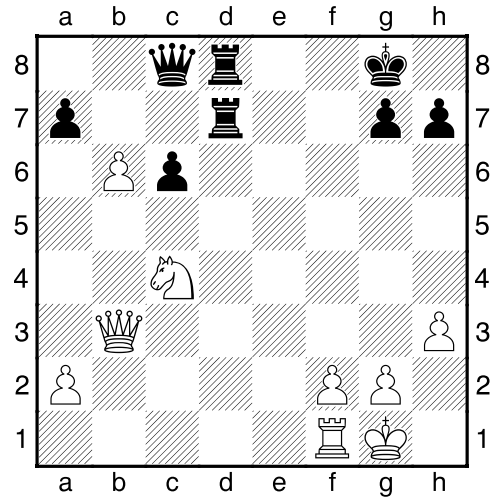
Here, if the White Bishop moves, Black will be in check from the Rook on e1. The best place for the Bishop is c5, where it will attack the Queen. Black has no chance to save the Queen because it is check.



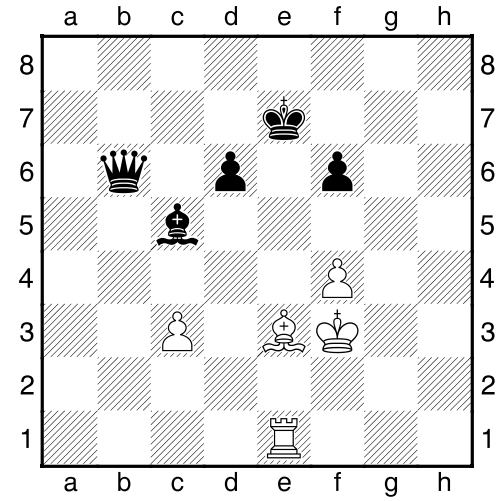
Here, if Black moves the Knight, White will be in check from the Bishop on c5. The best move for the Knight is to capture the Pawn on c2 and attack the Rook on a1. After White has moved out of check, Black will play 2... Nxa1.

Find the Discovered Attacks

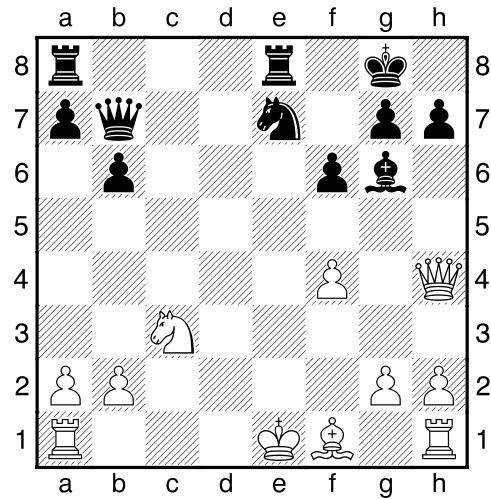
1. White to move



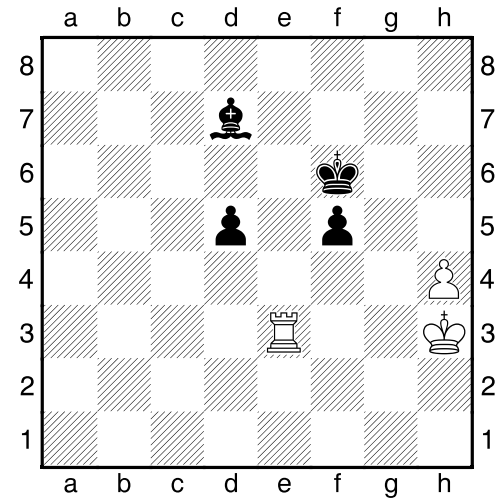
2. White to move



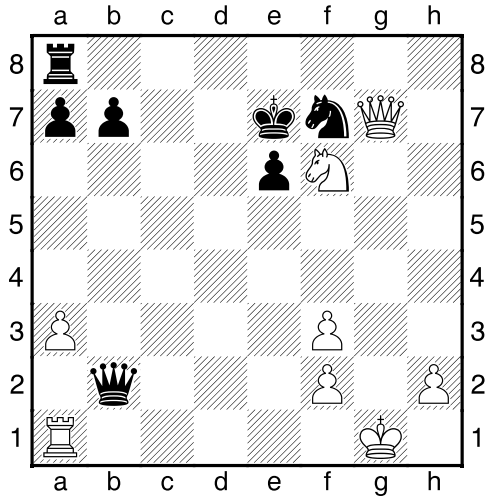
3. Black to move



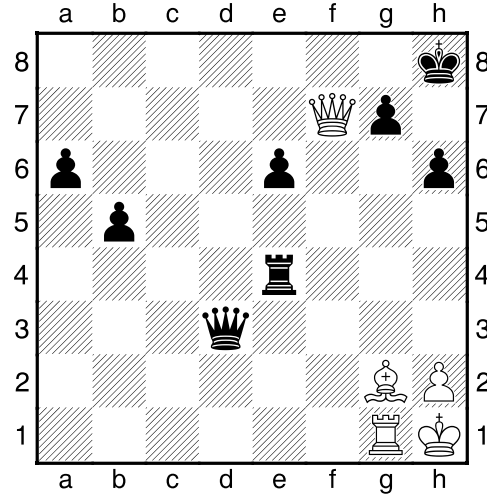
4. Black to move



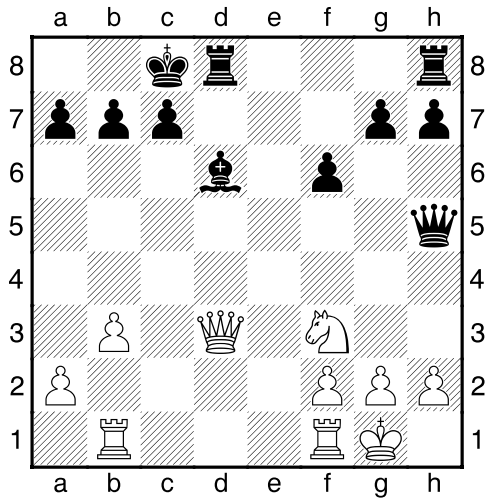
5. White to move



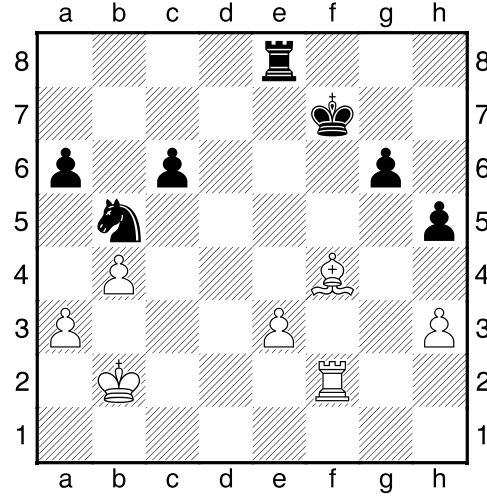
6. White to move



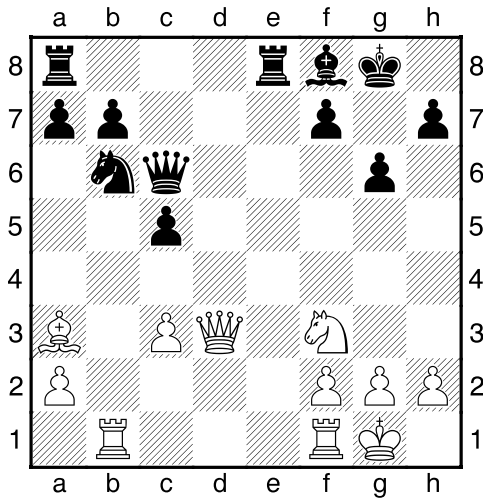
7. Black to move



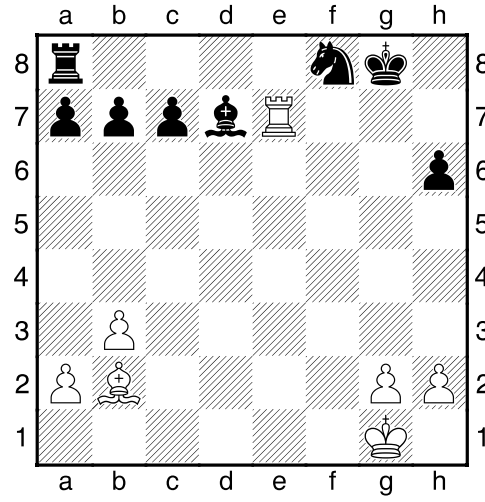
8. White to move



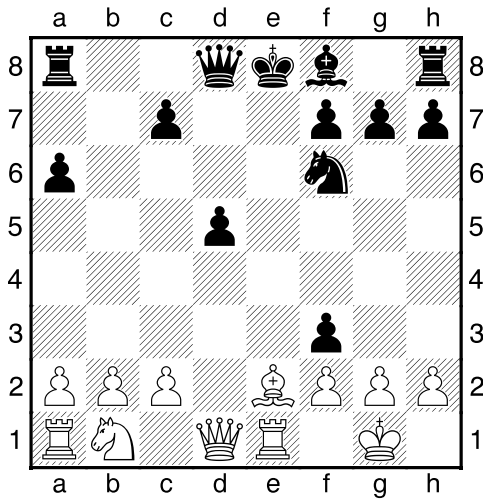
9. Black to move



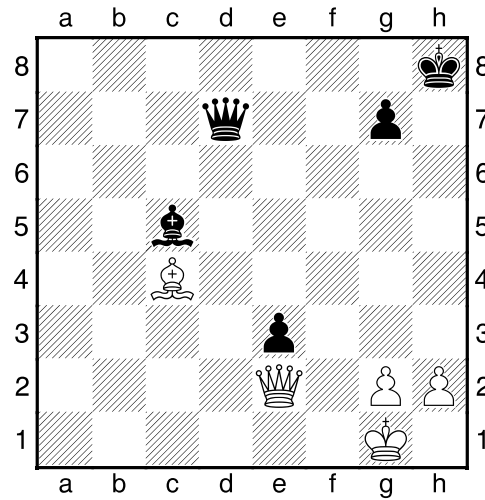
10. White to move



11. White to move



12. Black to move and checkmate using a series of checks.



Answers

1. 1 Nd6+ King moves 2 Nxc8 wins Queen for Knight
2. 1 Bx5+ King moves 2 Bxb6 wins the Bishop and Queen
3. 1... Nf5+ 2 Kf2 Nxe4 wins the Queen
4. 1... f4+ 2 King moves fxe3 wins the Rook
5. 1 Nd5+ exd5 2 Qxb2 wins Queen for Knight. Note that 1 Ng8+ is not so decisive because of 1... Rxe8! (pinning White's Queen) 2 Qxe8 Qxa1+
6. 1 Qxg7+ Kxg7 2 Bxe4+ King moves 3 Bxd3
7. 1... Bxh2+ 2 Nxe2 Rxd3 wins Queen for Knight
8. 1 a4 Na7 (the only safe square) 2 Bb8+ king moves 3 Bxa7 wins the Knight.
9. 1... c4 2 Queen moves Bxa3 wins a Bishop.
10. 1 Rg7+ Kh8 2 Rxd7+ Kg8. Try it again! 3 Rg7+ Kh8 4 Rxc7+ Kg8 And again! Note that this is not a draw by repetition since the position is different each time, with Black having one fewer piece.
11. 1 Bb5 double check mate
12. 1... Qd1+ 2 Qxd1 e2+ 3 Kh1 exd1=Q+ 4 Bf1 Qxf1 mate