

# Is it checkmate?

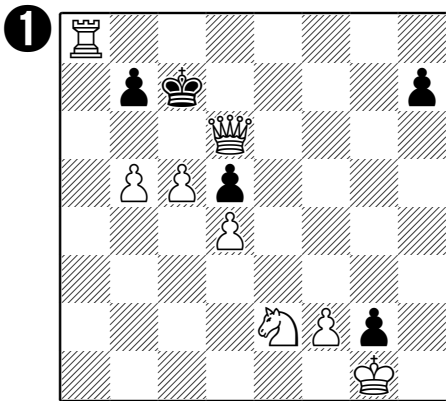


Only two of the positions are actually checkmate! How did you get on?

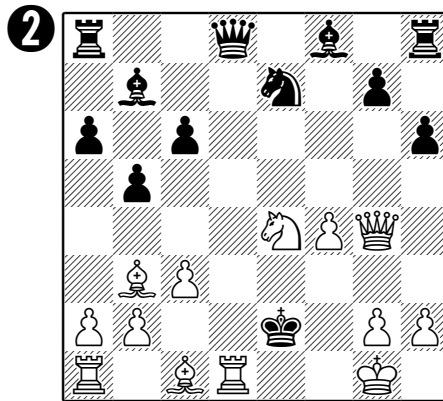
A lot of people think puzzles 3, 6, 7 or 9 are checkmate, because the piece that gets black out of check is a long way away. **Always remember to look at the whole board!**

Position 1 is **stalemate** - black has no legal moves.

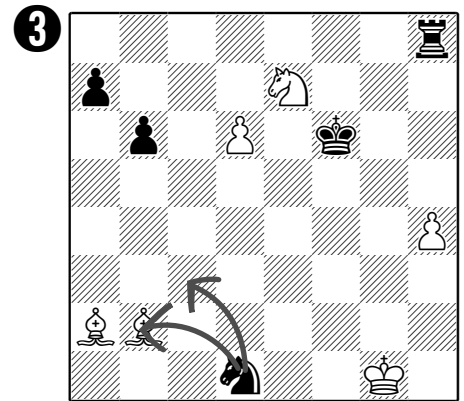
But position 4 isn't stalemate - although the black king can't go anywhere, black has loads of other pieces that can move.



Yes, it is checkmate  
 No, it's not checkmate

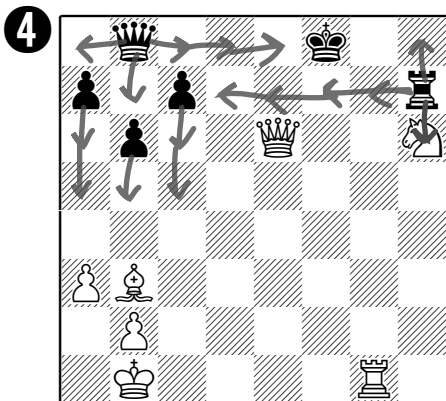


Yes, it is checkmate  
 No, it's not checkmate

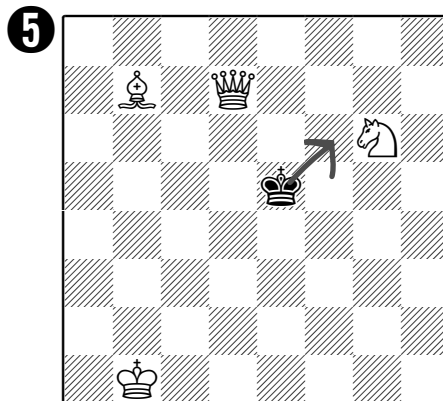


Yes, it is checkmate  
 No, it's not checkmate

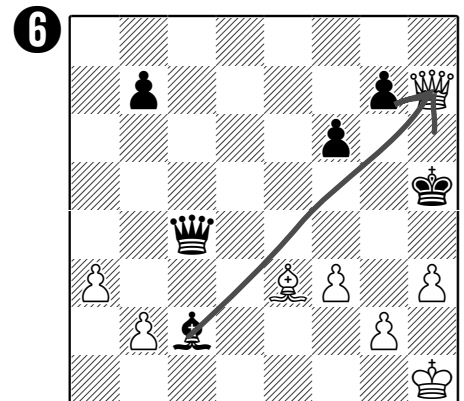
*Taking is better*



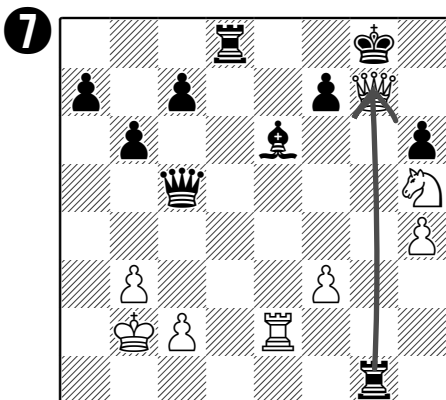
Yes, it is checkmate  
 No, it's not checkmate



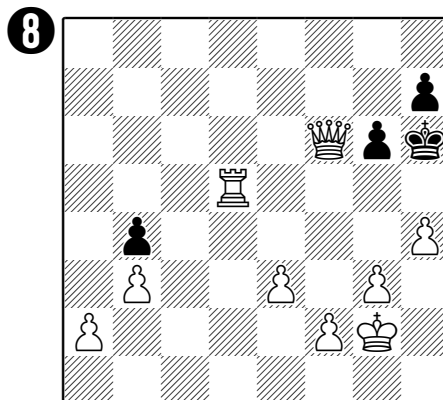
Yes, it is checkmate  
 No, it's not checkmate



Yes, it is checkmate  
 No, it's not checkmate

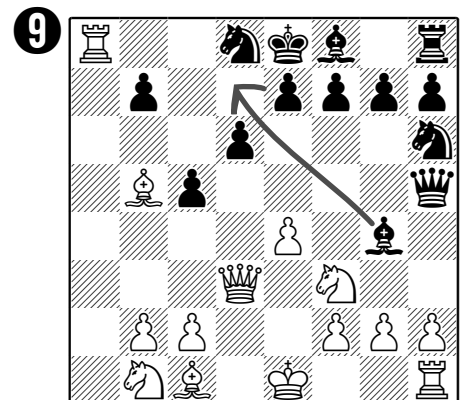


Yes, it is checkmate  
 No, it's not checkmate



Yes, it is checkmate  
 No, it's not checkmate

*It's stalemate!*



Yes, it is checkmate  
 No, it's not checkmate