

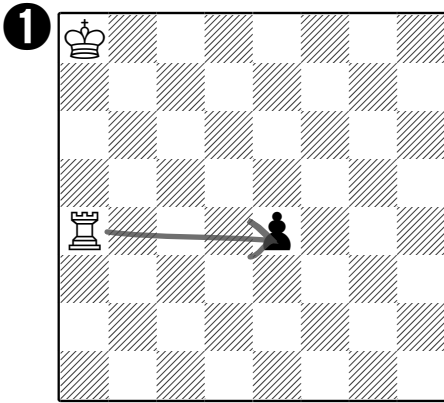
Can you take the black pawn?



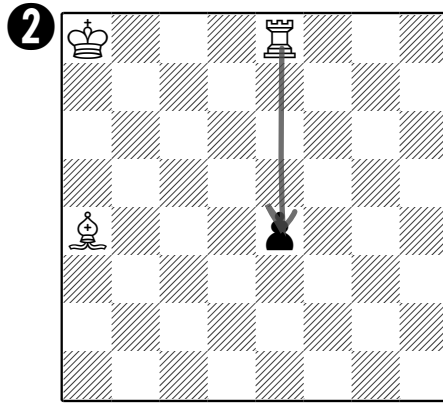
Here are all of the taking moves.

Look and see if there were any you missed - especially knights and pawns as these can be especially tricky when you've only just learned how they move.

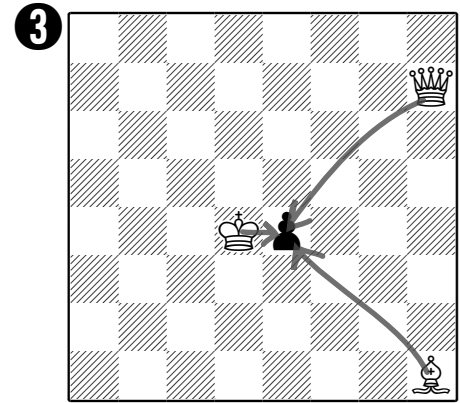
Remember - if a knight is on a white square, it can only go to a black square on its next move. And if it's on a black square, it can only go to a white square.



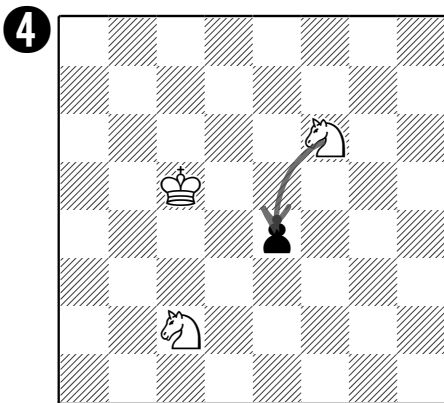
1 taking move(s)



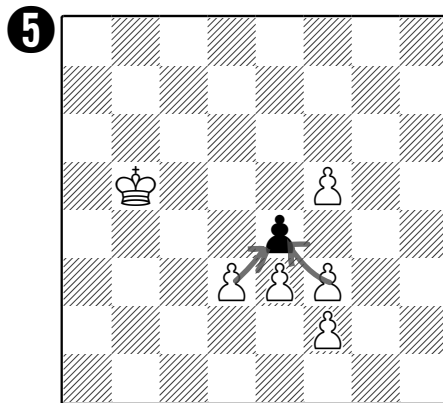
1 taking move(s)



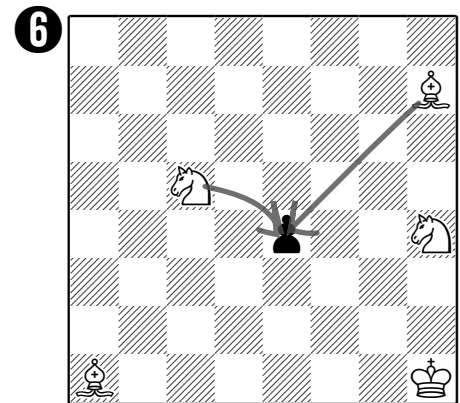
3 taking move(s)



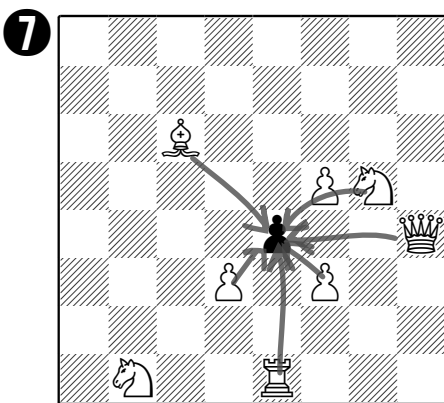
1 taking move(s)



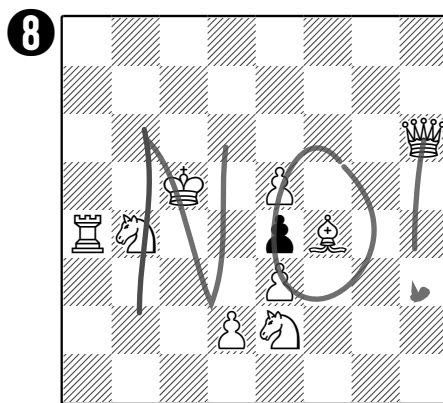
2 taking move(s)



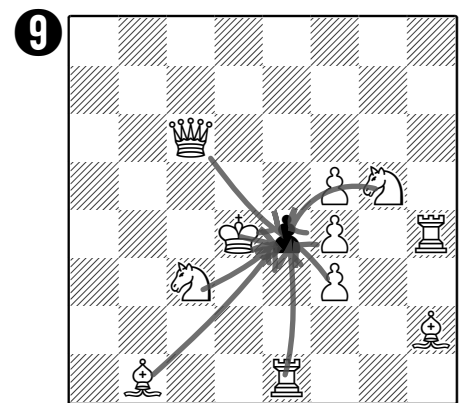
2 taking move(s)



6 taking move(s)



0 taking move(s)



7 taking move(s)