

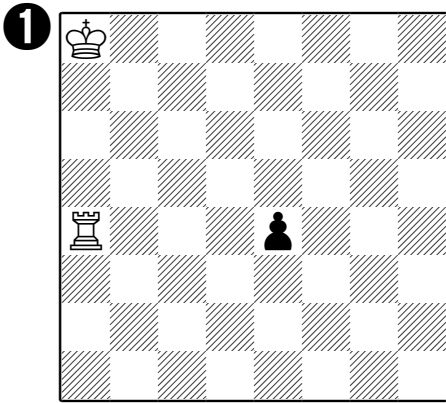
Can you take the black pawn?



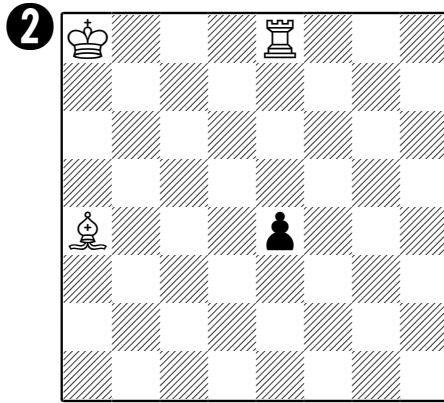
You are playing white in all of these pictures. If you can take the black pawn in one move, please show me how by drawing an arrow on the picture. If you can't take the pawn, write a great big 'NO' on top of the picture!

There might be more than one way of taking the pawn - try to find as many ways as you can, draw → for them all, and write down how many there are in the circle.

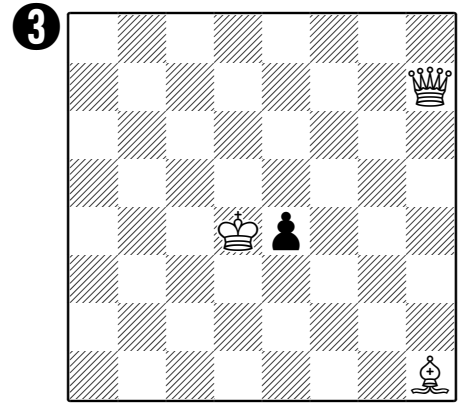
NB. The white pawns are always moving UP the board.



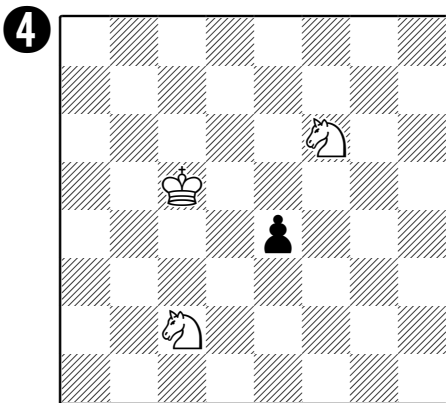
taking move(s)



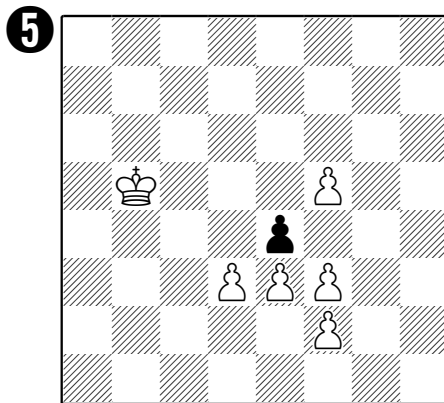
taking move(s)



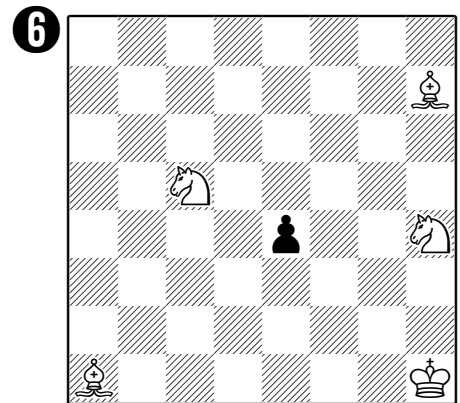
taking move(s)



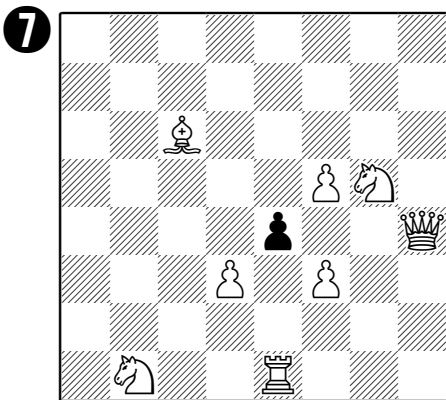
taking move(s)



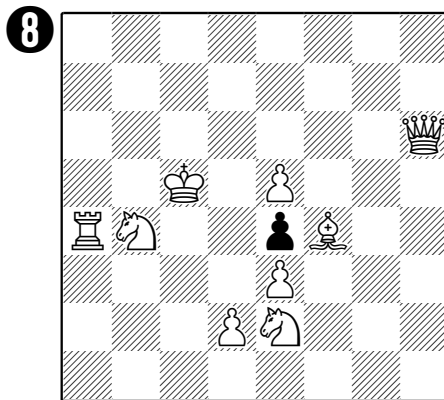
taking move(s)



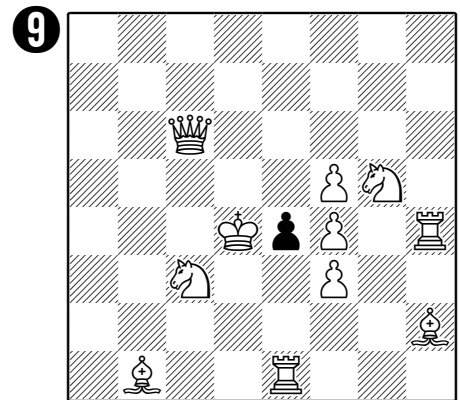
taking move(s)



taking move(s)



taking move(s)



taking move(s)