



**ENGLISH CHESS FEDERATION**

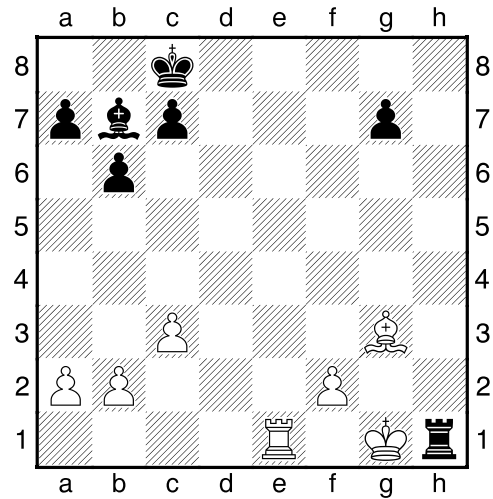
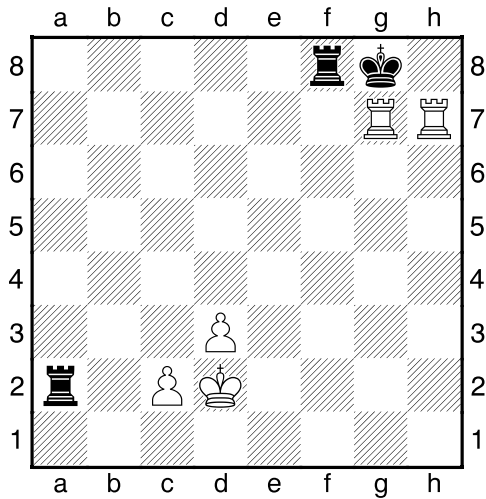
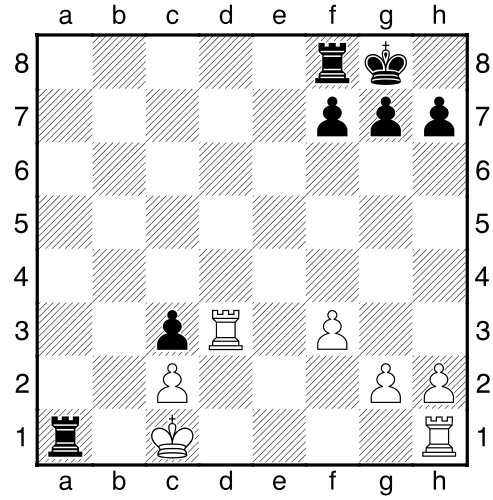
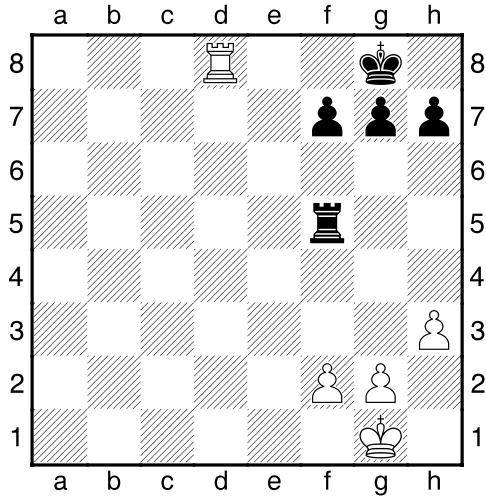
**CHESS SKILLS**

**Rook & Queen  
Checkmates**

Adapted from the Chess Skills leaflets,  
produced for the British Chess Federation by JE Littlewood and RA Furness.  
Developed from the Tactics for Juniors sheets  
originally prepared by RG Wade, R Bott and S Morrison.

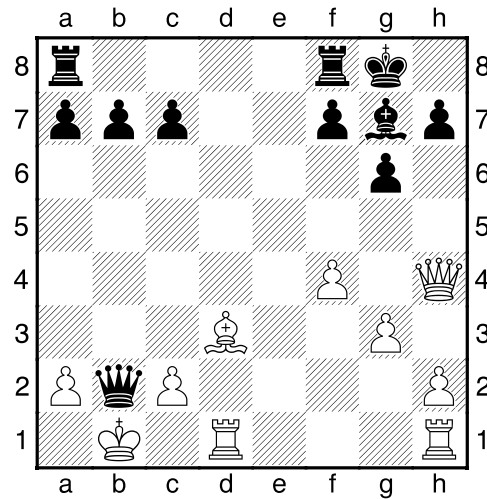
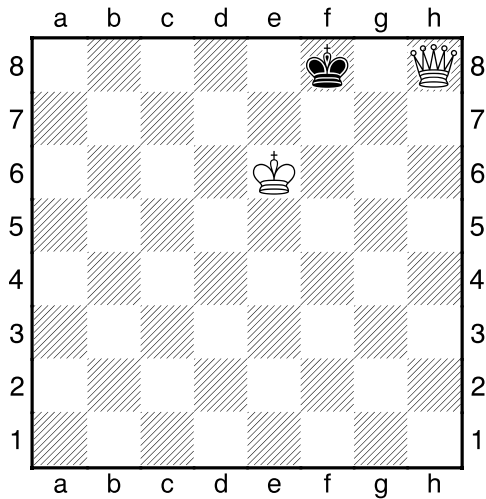
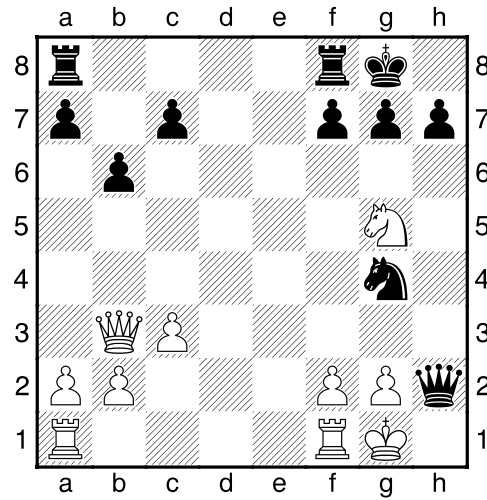
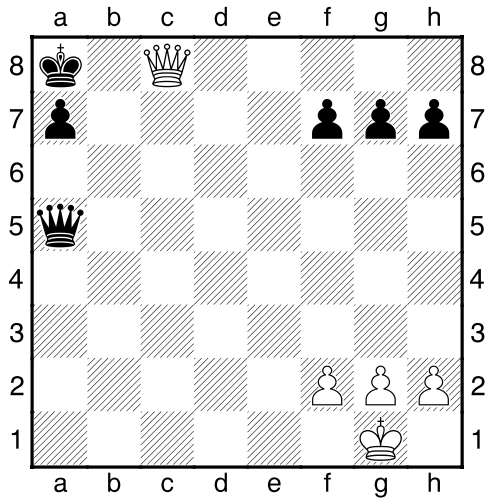
## Rook Checkmate Examples

Here are some positions showing how Rooks can deliver checkmate.  
They can always be helped by other pieces.



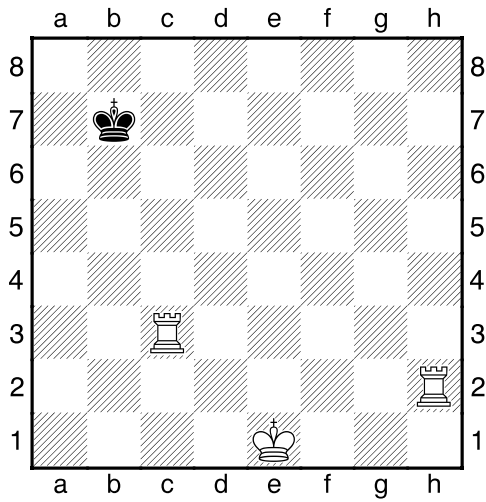
## Queen Checkmate Examples

The Queen is also often supported by another piece in a checkmating attack. Remember the Queen can move like a Rook and like a Bishop.

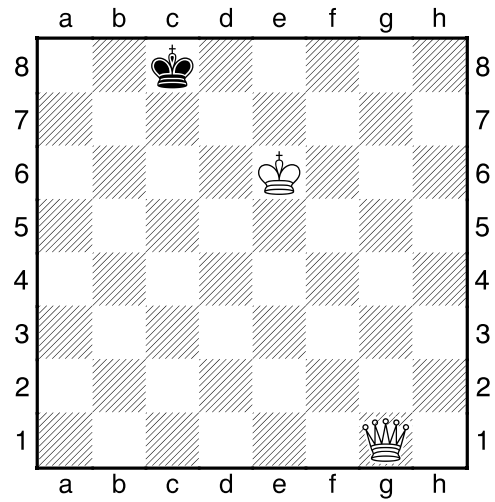


## Find the Checkmates

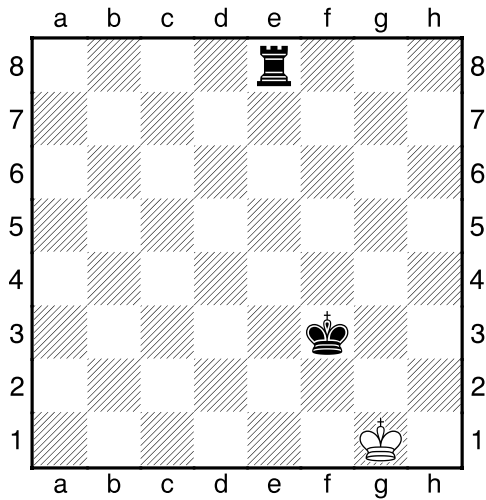
1. White to play and checkmate in two moves using both rooks.



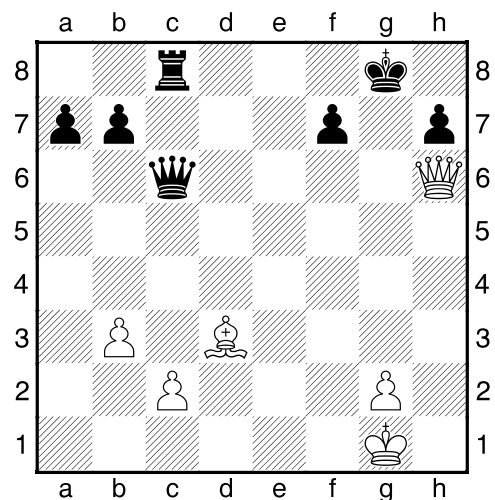
2. White to play and checkmate in two moves.



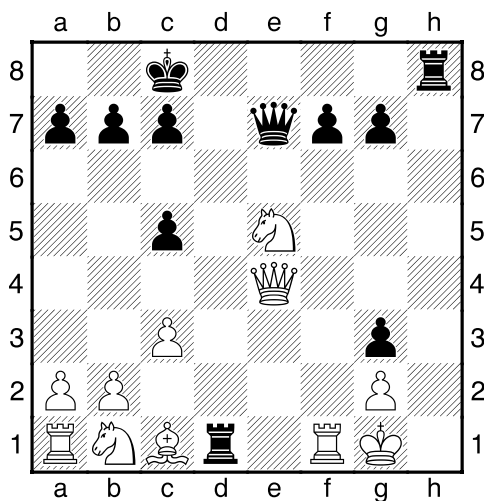
3. Black has to make an accurate waiting move to checkmate in two.



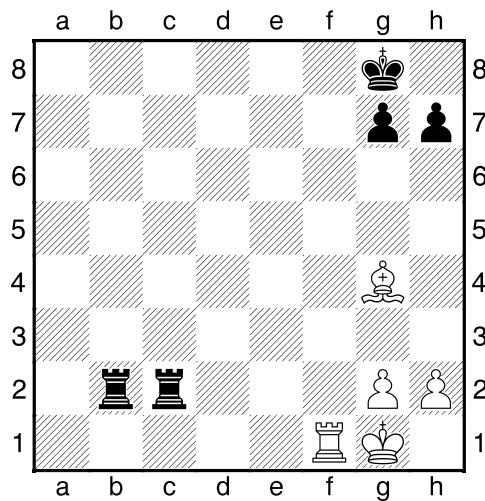
4. White to play and checkmate in four moves – all checks.



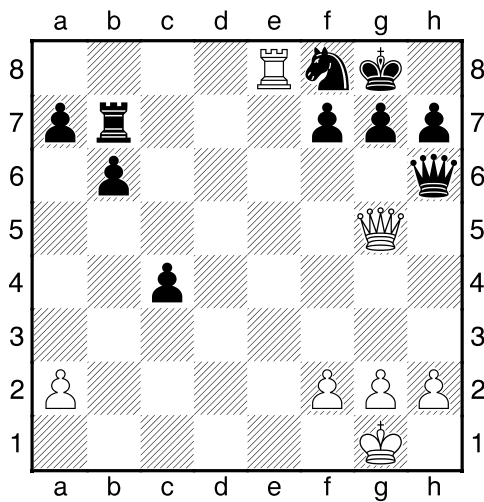
5. Black to play and checkmate in two moves – move rooks only.



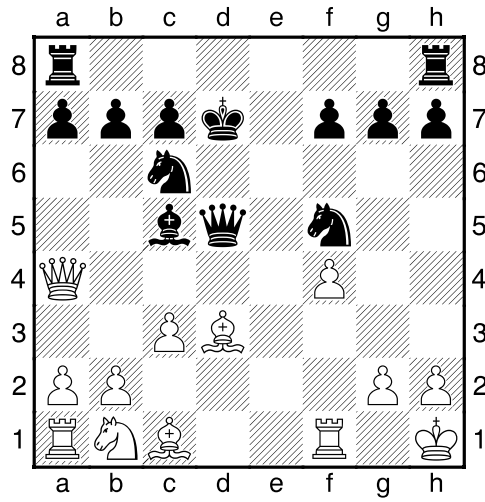
6. White to play, mate in two.  
Black to play, mate in three.



7. White to play and checkmate in two moves.



8. Black to play and mate in two – look for an unexpected check.



## Answers

1. 1 Rb2 Black king moves 2 Ra3++ King.
2. 1 Qa7 Kd8 2 Qb8++ (not 1 Qb6? Stalemate)
3. 1... Rh8 2 Kf1 Rh1++
4. 1 Bxh7+ Kh8 2 Bg6+ Kg8 3 Qh7+ Kf8 4 Qxf7++
5. 1... Rh1+ 2 Kxh1 Rxf1++
6. 1 Be6+ Kh8 2 Rf8++ or Black to move 1... Rxd2+ 2 Kh1 Rxd2+ 3 Kg1 Rbg2++
7. 1 Rxf8+ Kxf8 2 Qd8++
8. 1... Ng3+ 2 bxc3 Qh5++