



ENGLISH CHESS FEDERATION

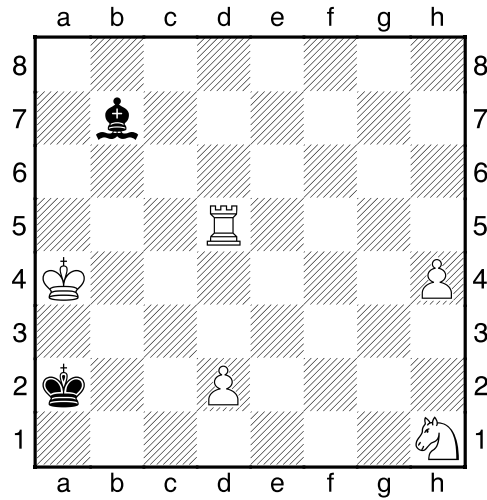
CHESS SKILLS

The Skewer

Adapted from the Chess Skills leaflets,
produced for the British Chess Federation by JE Littlewood and RA Furness.
Developed from the Tactics for Juniors sheets
originally prepared by RG Wade, R Bott and S Morrison.

The Skewer

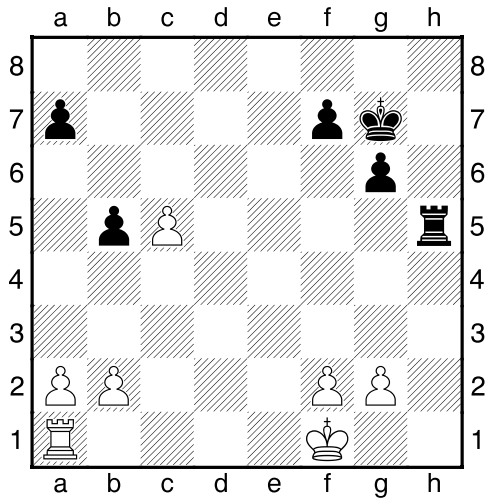
A skewer is an attack upon two pieces on the same line, where the piece nearer the attacker is compelled to move, leaving the other piece to be taken.



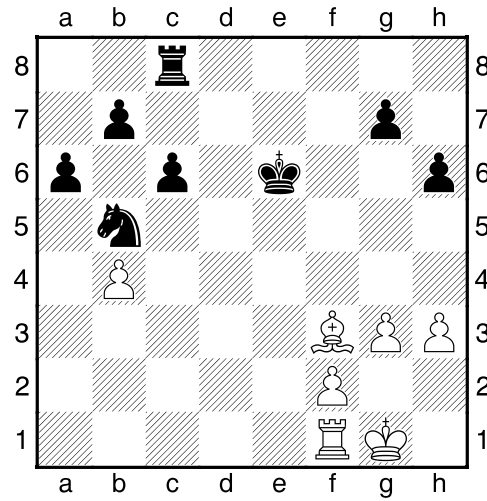
In this position,
the black Bishop is skewering the white Rook and Knight on the diagonal.
When the Rook moves, the Knight can be captured.

Find the Skewer

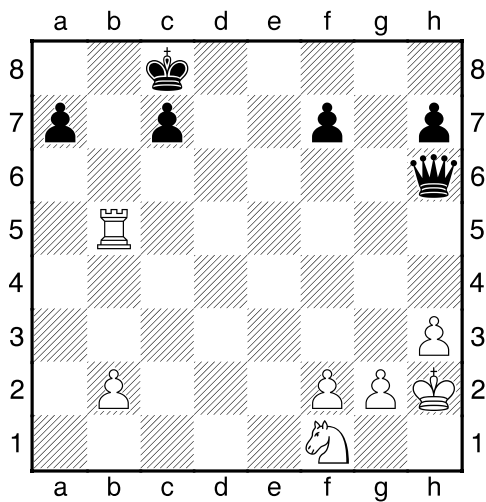
1. Black to move and win a piece using a skewer



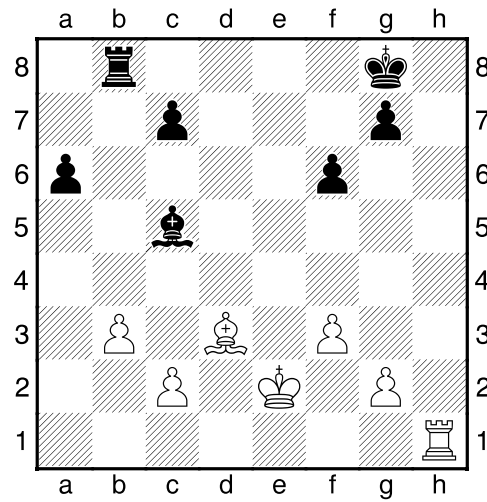
2. White to move and win a piece using a skewer



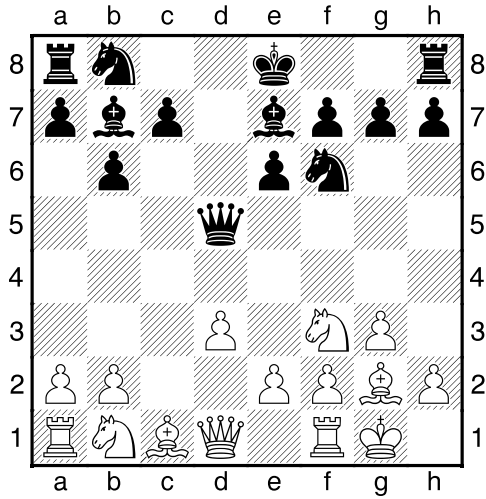
3. Black to move and win a piece using a skewer



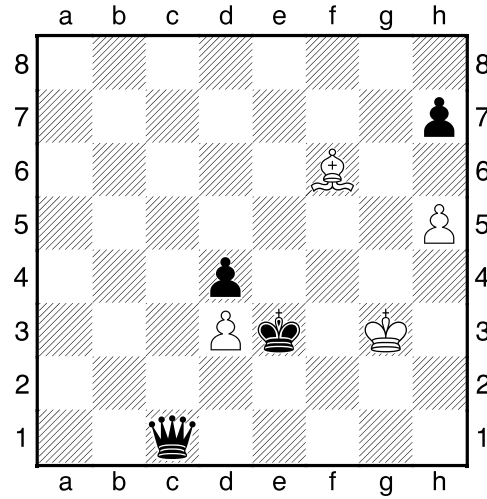
4. White's forcing move prepares a skewer on the next move



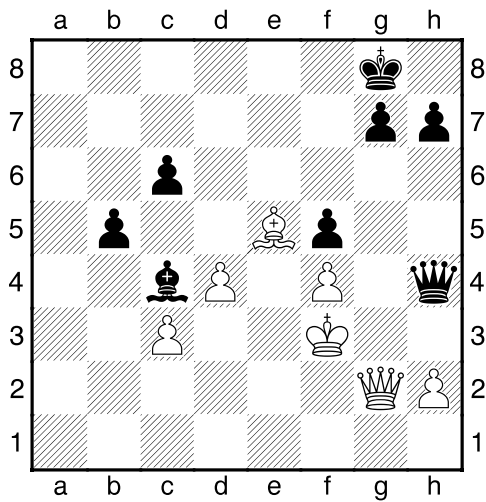
5. White's skewer wins material



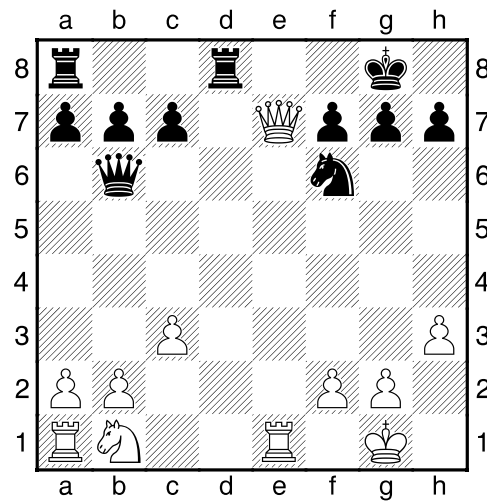
6. White to move



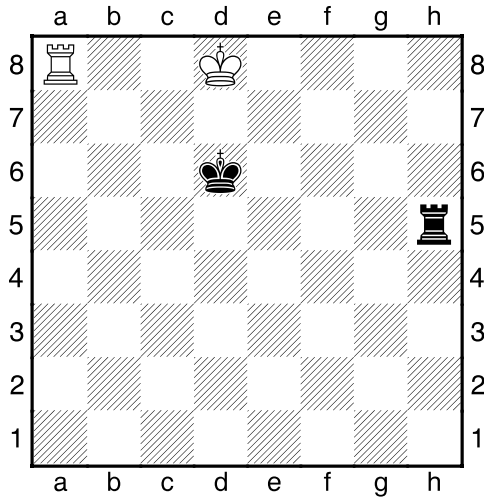
7. Black to move



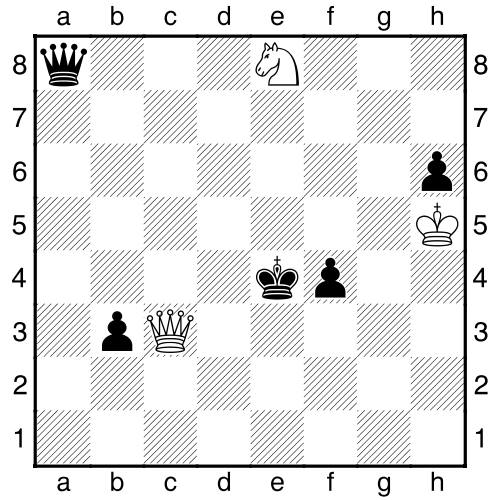
8. Black's skewer wins material



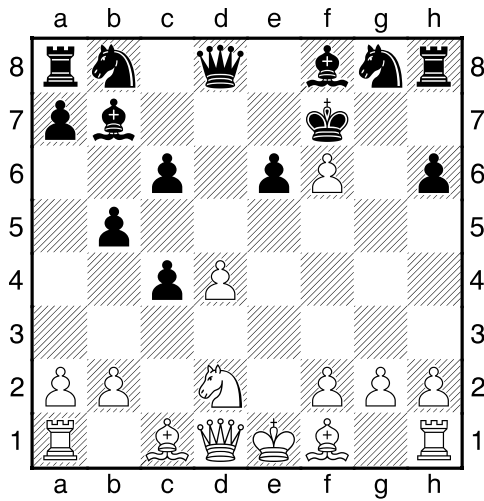
9. White to move and set up a winning skewer



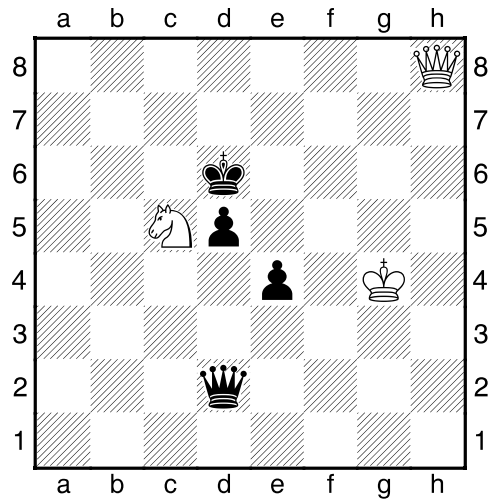
10. White forces a position which allows a winning skewer



11. White to move prepares a nasty skewer



12. White to move wins the Queen in three moves at most



Answers

1. 1... Rh1+ 2 Ke2 Rxa1
2. 1 Bg4+ King moves, 2 Rxb8
3. 1... Qa6 2 Rook moves, then Qxf1
4. 1 Bc4+ Kf8 2 Rh8+ Ke7 3 Rxb8
5. 1 Nb4 (or Ne1) Queen moves 2 Bxb7 followed by 3 Bxa8 (not Ng5, as Qxg2 mate)
6. 1 Bg5+ Kxd3 2 Bxc1
7. 1... Bd5+ 2 King moves Bxg2
8. 1... Re8 When the Queen moves to safety, Black plays Rxe1+
9. 1 Ra6+ King moves 2 Ra5+ King moves 3 Rxh5
10. 1 Nd6+ Kd5 (no other move) 2 Qf3+ Kxd6 3 Qxa8
11. 1 Qh5+ Kxf6 (no other move) 2 Qb4+ Kf7 3 Qxd8
12. 1 Nxe4+ dxe4 2 Qd8+ King moves 3 Qxd2