

# WINTON BRITISH CHESS SOLVING CHAMPIONSHIP 2016-2017

## THE FINAL

### ETON COLLEGE, Saturday 18<sup>th</sup> February 2017

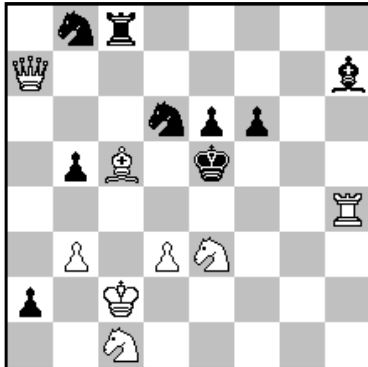
ROUND 1: Twomovers

TIME: 20 minutes

SOLVER:

#### 1) Murray Marble

British Chess Magazine 1915



Mate in 2 (8 + 9)  
5 points

1.Kd1? Sc6!

1.Qa3! (2.Qb2#) (5)

1...a1Q 2.Qxa1#

1...Sc4 2.Bd4#

1...Se4 2.d4#

1...Sf5 2.Re4#

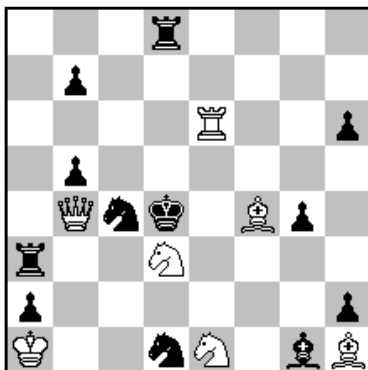
1...Sc6 2.Bxd6#

1...Bxd3+ 2.Sxd3#

1...Rxc5+ 2.Qxc5#

#### 2) Leopold Swedowski

1<sup>st</sup> Prize Pedagogusok Lapja 1966-1967



Mate in 2 (7 + 12)  
5 points

1.Bxb7? (2.Re4#) 1...Rd5!

1.Be4? (2.Sc2#) 1...Se3!

1.Bd2? (2.Qc5#) 1...b6!

1.Sc1? (2.Sc2#/2.Se2#) 1...Rf3!

1.Re3! (2.Sc2#) (5)

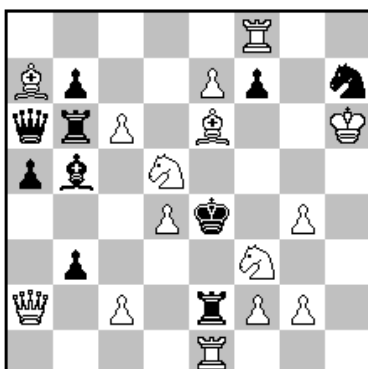
1...Sxe3 2.Be5#

1...Bxe3 2.Be5#

1...Rc3 2.Qc5#

#### 3) Josef Retter

167 TT Die Schwalbe 1982



Mate in 2 (15 + 10)  
5 points

1.Qxb3? (2.Bf5#) 1...Bc4!

1.Qb2? (2.Sd2#) 1...bxc2!

1.Bb8? (2.Sc3#) 1...Rxc6!

1.Rd8? (2.Bf5#) 1...fxe6!

1.e8S! (2.Sd6#) (5)

1...bxc2 2.Bf5#

1...Rxc6 2.Sd2#

1...fxe6 2.Sc3#