

# Inside Chess

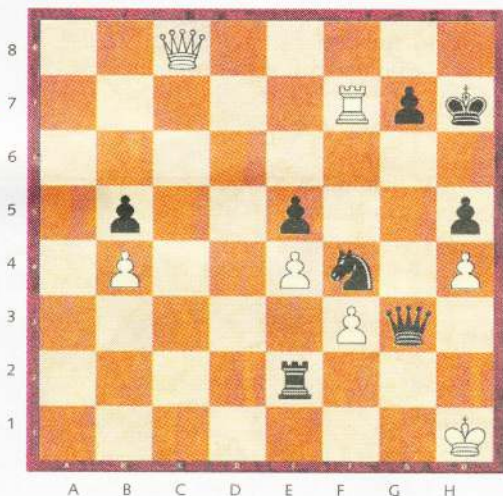
by Carl Portman

**It is hard to imagine that this is my 50th column.** This is a landmark that I am fiercely proud of. My intention at the beginning was to reach out to as many prisoners as I could via Inside Time and I have done that. The letters I have received over time from the UK and beyond have always been gratefully received and are often quite astonishing; explaining how chess has affected lives on the inside in a positive way. I have met many of you through my prison visits and engaged in battle on the chess board with literally hundreds of people and it has always been fun, productive and a worthwhile pursuit.

I want to thank the Inside Time Team for supporting the column and all of the inmates who have ever written in support of my column. My book 'Chess Behind Bars' was written as a result of my interaction with you and for some has become the chess bible in their cell. I must expressly thank the English Chess Federation who support chess in prisons and have donated equipment which I bring into prisons on my visits. The London Chess Centre has donated magazines as prizes, which are always well received (when they actually get through!) and I know that prisoners share them with fellow chess lovers on the inside, which is great.

Many of you are regular writers and I wish I could give you all a prize for your efforts but of course I do not have the resources - you just have to keep hoping you are first out of the hat. Despite sometimes not winning, people still support the column. It is after all your column, so thank you. I cannot meet you all, write to you all or give chess equipment to you all but I do what I can with what I have. My visits are a really nice way of saying hello in person.

I have been asked how long I will continue my voluntary prisons work for. The answer is I do not know. It could be a week, a month or a year but I know that together, using a 1500-year-old game we have all made life better through chess. Here's to the next 50 columns!



This month's puzzle is rather clever and should encourage you to 'think outside of the box' as the saying goes. I may have used this in the early days but there is a fresh crop of prisoners who play chess who might like a go. This is a famous game from New York 1963 between Larry Evans and the great Sammy Reshevsky. It was Evans as White (to play) and he was in a desperate situation. Black threatens checkmate on the next move. You are standing at the jaws of death, how are you going to snatch something from this?

A Magnetic Pocket Chess Set, donated by the London Chess Centre is the prize for the first correct entry drawn.

Write to me with your answer, care of The English Chess Federation at The Watch Oak, Chain Lane, Battle, East Sussex TN33 0YD. Please note that you should always write to me at the ECF not via InsideTime. Also please include your prison number and if you can, the date and what month's puzzle you are entering.

The answer to September's puzzle was: 1...Ng3+! 2.fxg3 Nxe2+ just wins. If white blocks on f3 with a knight or bishop he loses his queen on d4. He must block with the queen and that is taken with the knight. The rest of the game is an easy win.

The winner of August's puzzle was Tony from HMP Stafford.