

# Maidenhead Junior Chess Club Tournament

Claire's Court Junior Boys School, Cannon Lane, Maidenhead, Berkshire

**Saturday 16<sup>th</sup> February 2019; 2.00 p.m. - 5.30 p.m. in the Sports Hall**

**Directions** For Sat-Nav directions, use the postcode SL6 4QQ, which directs to the entrance drive.

**Sections are open to all children under 18 on 31<sup>st</sup> August 2018**

**Top Section; games graded English Chess Federation Rapid Play**

15 Minutes for the game plus 5 seconds per move from the start; 5 Rounds

This section will **not** qualify for the Delancey UK Chess Challenge Megafinal.

**Intermediate Section; games graded English Chess Federation Rapid Play**

The beginners section will be divided into two sections, if there are 16 or more entries

This section will qualify for the Delancey UK Chess Challenge Megafinal

**Beginners Section; games graded English Chess Federation Rapid Play**

10 Minutes for the game plus 5 seconds per move from the start; 7 Rounds

This section will qualify for the Delancey UK Chess Challenge Megafinal

Delancey Website <https://www.delanceyukschoolschesschallenge.com/>

**Children age 11 to 17 can enter a Delancey UK Chess Challenge Megafinal without the need to qualify**

**The entry fee for ECF Junior Silver Members (with email to [nigelwdennis@btinternet.com](mailto:nigelwdennis@btinternet.com)) is: -**

£5 by cash or cheque by Wednesday 13<sup>th</sup> February 2019

£5 by email by Thursday 14<sup>th</sup> February and BACS by Friday 15<sup>th</sup> February 12.00noon

£6 by email by Thursday 14<sup>th</sup> February and cash on the day

£9 on the day with no email by Thursday 14<sup>th</sup> February 2019

All players should be ECF Junior Silver members. £2 Extra charge for those who are not ECF Junior Silver Members

Free ECF Junior Silver Membership until 31<sup>st</sup> August 2019 is available for junior players who have not previously been members. See: - <https://www.englishchess.org.uk/guide-to-joining-the-ecf/>

Please give the name of the child entering stating whether boy or girl, postal address, telephone number, age, date of birth, school and usual email address. If these details have previously been given, then only the name of the child entering need be given. Please also state the date of the event entering and whether entering the Top or Beginners section. If you have not read the club information October 2018, please ask for it to be sent, or read it at: - <http://nigelwdennis.wixsite.com/mysite/registration-form>

For BACS payments, the Maidenhead Junior Club bank account details are: -

Barclays Bank, St Albans Branch Sort Code 20-74-09 Account Number 43765997

Cheques payable to Maidenhead Junior Chess Club are to be posted to Nigel Dennis, Boundary House, 230 Greys Road, Henley-on-Thames, Oxon RG9 1QY.

There are trophies for first, second and third for three sections.

There is a drinks machine. Drinks are free, though you are asked to leave a small donation in a cup

**Parents Responsibility;** The organisers accept no responsibility for any loss, theft or accident during an event. Adult supervision will only be provided in the tournament hall. Parents are responsible for their children during the event and agree to the terms and conditions in this entry form as a condition of entry, and that player's results and grading information may be published to the internet.

**Maidenhead Junior Chess Club Website** <http://nigelwdennis.wixsite.com/mysite>

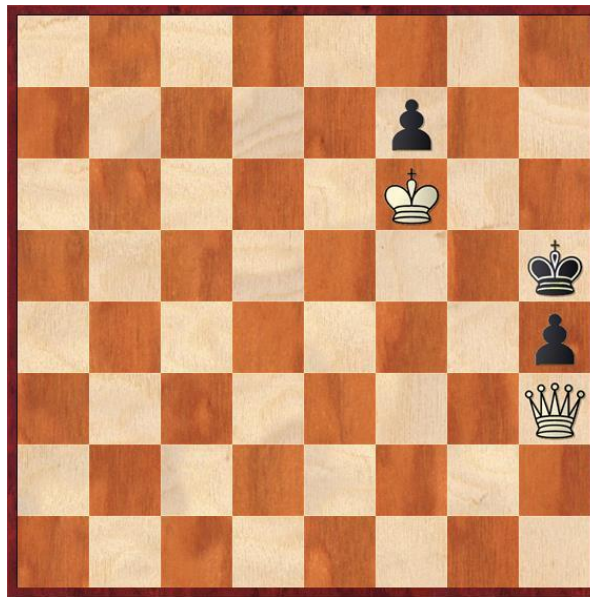
Chess Stall: Francis Bowers will be selling chess books and equipment. For orders in advance, contact him:-

**Tel. 01733 575544** Email [info@premierengravinguk.com](mailto:info@premierengravinguk.com)

**Websites** [www.chessbower.com](http://www.chessbower.com) [www.premierengravinguk.com](http://www.premierengravinguk.com)

**White to Play and Mate in Two Moves**

Black (3 Men)



White (2 Men)

The solution will be given on the entry form for the next tournament on 3<sup>rd</sup> March 2019

**Solution to Problem on the Entry Form for the Tournament on 5<sup>th</sup> January 2019**

**White to Play and Mate in Two Moves**

Black (3 Men)



White (3 Men)

**Colin Vaughan 1978  
The Problemist**

- |                   |        |                |
|-------------------|--------|----------------|
| 1 Qf3             | Threat | 2 Rg3-g8#      |
| 1 .....Qf1        |        | 2 Q x f1#      |
| 1 ..... Qd1       |        | 2 Q x d1#      |
| 1 ..... Qc2 or d2 |        | 2 Qf1#         |
| 1 ..... Qb2 or c6 |        | 2 Qf1# or Qd1# |
| 1 ..... Qg1       |        | 2 Rh2#         |
- # = checkmate