



GLOBAL
INVESTMENT
MANAGEMENT

Nigel Dennis
Boundary House
230 Greys Road
Henley-on-Thames
Oxfordshire RG9 1QY

7th August 2019

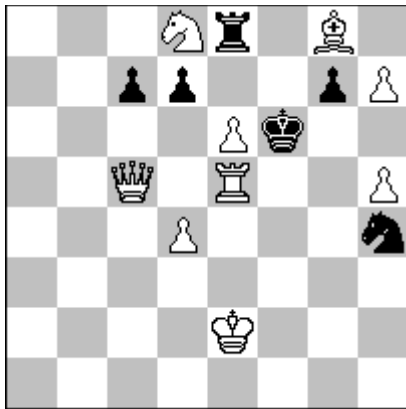
WINTON BRITISH CHESS SOLVING CHAMPIONSHIP 2019-2020

Organised by the British Chess Problem Society

<http://www.theproblemist.org/bcps.pl>

THE STARTER PROBLEM SOLUTION

John Rice
Mate in 2



1. e7! [zugzwang - 1. exd7? (2. dxe8S#) 1.... Sf5!
]]
- 1.... S~ ; 2. R(x)f5#
 - 1.... g5, g6 ; 2. h8B(Q)#
 - 1.... c6 ; 2. Qd6#
 - 1.... d6 ; 2. Re6#
 - 1.... d5 ; 2. Qc6#
 - 1.... Rxd8 ; 2. exd8B(Q)#
 - 1.... Rxe7 ; 2. Qxe7#
 - 1.... Rf8 ; 2. exf8R(Q)#
 - 1.... Rg8 ; 2. hxg8S#

496 Solutions were submitted, 271 of them correct, and 225 incorrect. The Starter was published in national newspapers, appeared on their websites, and was circulated to schools. 45 Juniors under the age of 18 submitted solutions with 26 of them giving the correct answer. The numbers of each incorrect solution submitted were as follows: -

1.....e x d7	198
1.....h8 = Q	7
1.....Rg5	6
1.....Qc1	5
1.....Other Moves	9
Total	225

By far the most incorrect solutions gave 1 e x d7 with the threat of 2 d x e8 = S mate, missing that Black can play 2.....Sf5! This blocks the White Rook from g5, and there is no mate in two.