

Maidenhead and Earley Junior Tournament

Radstock Lane Community Centre, Radstock Lane, Earley, Reading RG6 5UL

Saturday 4th January 2020; 2.00p.m. - 5.30p.m.

Directions Radstock Lane Community Centre is on the same site as Radstock Primary School and is opposite the entrance. There are parking spaces available.

Top Section and Intermediate Section; games graded English Chess Federation Rapid Play

15 Minutes for the game plus 5 seconds per move from the start; 5 Rounds

If there are more than about 12 entries, there will be a top and an Intermediate section.

Beginners Section; games graded English Chess Federation Rapid Play

10 Minutes for the game plus 5 seconds per move from the start; 7 Rounds

This section will not normally include a player who has won an earlier beginners section

Upper grading limit of about 30

The entry fee for ECF Junior Silver Members (with email to nigelwdennis@btinternet.com) is: -

£8 by cash or cheque by Wednesday 1st January

£8 by email by Thursday 2nd January and BACS by Friday 3rd January 12.00noon

£10 by email by Thursday 2nd January and cash on the day

£12 on the day with no email by Thursday 2nd January

All players should be ECF Junior Silver members. £2 Extra charge for those who are not ECF Junior Silver Members
Free ECF Junior Silver Membership until 31st August 2020 is available for junior players who have not previously been members. See: - <https://www.englishchess.org.uk/ecf-membership/>

Please give the name of the child entering stating whether boy or girl, postal address, telephone number, age, date of birth, school and usual email address. If these details have previously been given, then only the name of the child entering need be given. Please also state the date of the event entering and whether entering the Top or Beginners section. Parents of children entering tournaments will receive emails sending results and sending details of future events to those who have participated in a recent tournament. Parents who do not agree to this need to state this when entering.

For BACS payments, the Maidenhead Junior Club bank account details are: -

Barclays Bank, St Albans Branch Sort Code 20-74-09 Account Number 43765997

Cheques payable to Maidenhead Junior Chess Club can be posted to Nigel Dennis, Boundary House, 230 Greys Road, Henley-on-Thames, Oxon RG9 1QY.

There will be trophies for first, second and third for three sections.

Drinks including tea and coffee and snacks can be purchased from the bar, which is a private members club. After purchasing, £1 must be paid as a day membership fee to stay in the bar area.

This tournament is organized by Maidenhead and Earley junior chess clubs.

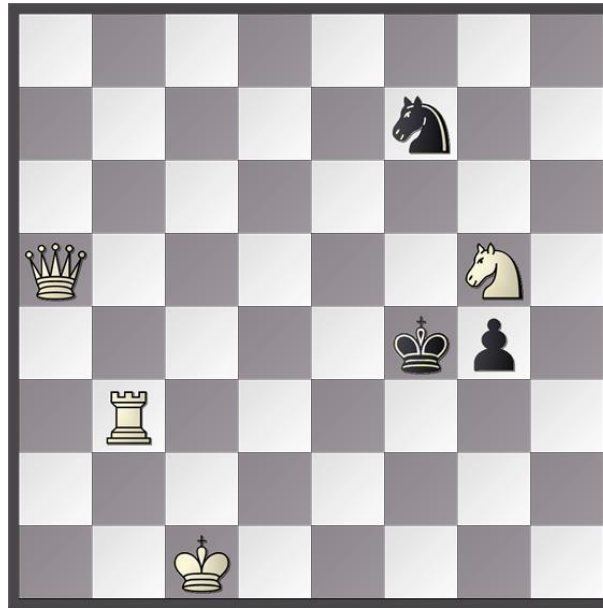
Parents Responsibility; The organisers accept no responsibility for any loss, theft or accident during an event. Adult supervision will only be provided in the tournament hall. Parents are responsible for their children during the event and agree to the terms and conditions in this entry form as a condition of entry, and that player's results and grading information may be published to the internet.

Maidenhead Junior Chess Club Website

<http://nigelwdennis.wixsite.com/mysite>

White to Play and Mate in Two Moves

Black (3 Men)



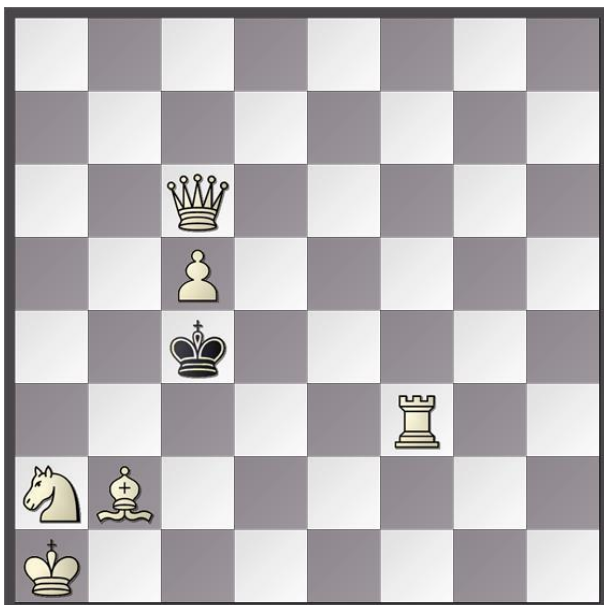
White (4 Men)

The solution will be given on the entry form for the next tournament

Solution to Problem on the Entry Form for the Tournament on 21st December 2019

White to Play and Mate in Two Moves

Black (1 Man)



White (6 Men)

Mansfield 1969 De Waarheld

- | | | |
|------------|-------|--------|
| 1 Sc3 | Block | |
| 1Kb4 | | 2 Qb5# |
| 1Kb3 | | 2 Qa4# |
| 1Kd4 | | 2 Qd5# |
- Block = Move with no threat
- # = Checkmate
- S = Knight