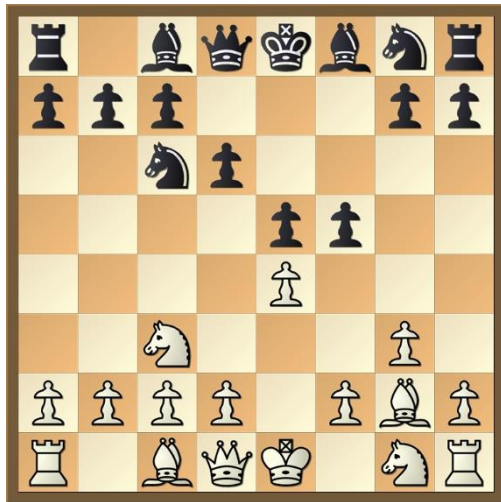


Dillan Duke v Kenneth Hobson

Winter Cup Finals - 28 Feb 2021 lichess.org, 28.02.2021

1.e4 e5 2.Nc3 [The Vienna game]

2...Nc6 3.g3 d6 4.Bg2 f5!?



I like this move as it immediately undermines white's centre. It also gains kingside space.]

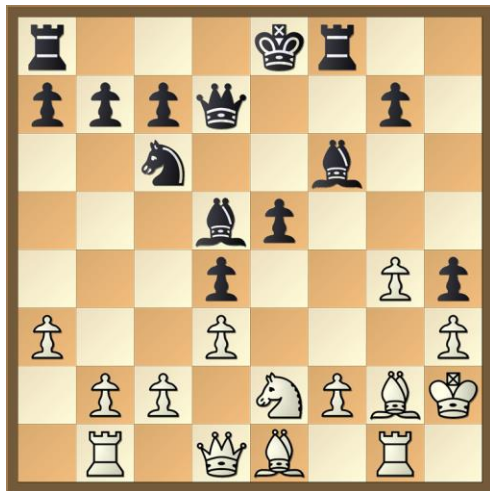
5.d3 Nf6 6.Nge2 fxe4 7.Nxe4 Bg4 8.Be3 Be7 9.0-0 d5!? [



pushing his pieces back and gaining a big centre.]

10.Nxf6+ Bxf6 11.h3 Be6 12.Kh2 Qd7 13.a3 h5 [going for an attack.]

14.Rb1 h4 15.g4 d4 16.Bd2 Bd5 17.Rg1 Rf8 18.Be1



[18.c4 dxc3 19.Nxc3 Bxg2 20.Rxg2 0-0-0±;

18.Bxd5 Qxd5 19.g5 Be7 20.f4 0-0-0±]

[I retain a solid advantage in both lines.]

18...Bg5 19.b4 Qd6 20.Kh1



20...Rf3! [An exchange sacrifice to deliver the final blow. Threatens Rh3 mate.]

21.Bxf3 [21.Ng3! Qf6 22.Ne4 Bxe4 23.dxe4 Rxa3± This is the best defence, but black is better thanks to his better pawn structure and safe king (after he castles.)]

21...Bxf3+ 22.Rg2



[22.Kh2 e4+ 23.Ng3 hxg3+ 24.fxg3 Bxd1]

22...Qd5 23.Kg1 Bxg2 24.c4 Qf3 25.Nxd4



25...Nxd4 [25...Qxh3 26.f3 Qh1+ 27.Kf2 Qf1# mates quicker, but I was fine with taking my time.]

26.Qxf3 Bxf3 27.Rb2 0–0–0 28.b5 Ne6 29.a4 Rxd3 30.a5 Nf4 31.Kh2 Rd1



0-1